

参考資料 目次

(需要)

資料 1-1	ネットワークキャリア旅客数 【グラフ】	104
資料 1-2	ネットワークキャリア旅客数 【表】	105
資料 1-3	ネットワークキャリア有償旅客マイル (RPM) 【グラフ】	106
資料 1-4	ネットワークキャリア有償旅客マイル (RPM) 【表】	107
資料 1-5	LCC旅客数 【グラフ】	108
資料 1-6	LCC旅客数 【表】	109
資料 1-7	LCC有償旅客マイル (RPM) 【グラフ】	110
資料 1-8	LCC有償旅客マイル (RPM) 【表】	111

(供給)

資料 2-1	ネットワークキャリア提供座席マイル (ASM) 【グラフ】	112
資料 2-2	ネットワークキャリア提供座席マイル (ASM) 【表】	113
資料 2-3	ネットワークキャリア座席利用率 【グラフ】	114
資料 2-4	ネットワークキャリア座席利用率 【表】	115
資料 2-5	ネットワークキャリア損益均衡座席利用率 【グラフ】	116
資料 2-6	ネットワークキャリア損益均衡座席利用率 【表】	117
資料 2-7	LCC提供座席マイル (ASM) 【グラフ】	118
資料 2-8	LCC提供座席マイル (ASM) 【表】	119
資料 2-9	LCC座席利用率 【グラフ】	120
資料 2-10	LCC座席利用率 【表】	121
資料 2-11	LCC損益均衡座席利用率 【グラフ】	122
資料 2-12	LCC損益均衡座席利用率 【表】	123

(営業収入)

資料 3-1	ネットワークキャリア営業収入額 【グラフ】	124
資料 3-2	ネットワークキャリアユニット営業収入 【グラフ】	125
資料 3-3	ネットワークキャリア営業収入額及びユニット営業収入 【表】	126
資料 3-4	ネットワークキャリアイールド 【グラフ】	127
資料 3-5	ネットワークキャリアイールド 【表】	128
資料 3-6	LCC営業収入額 【グラフ】	129
資料 3-7	LCCユニット営業収入 【グラフ】	130
資料 3-8	LCC営業収入額及びユニット営業収入 【表】	131
資料 3-9	LCCイールド 【グラフ】	132
資料 3-10	LCCイールド 【表】	133

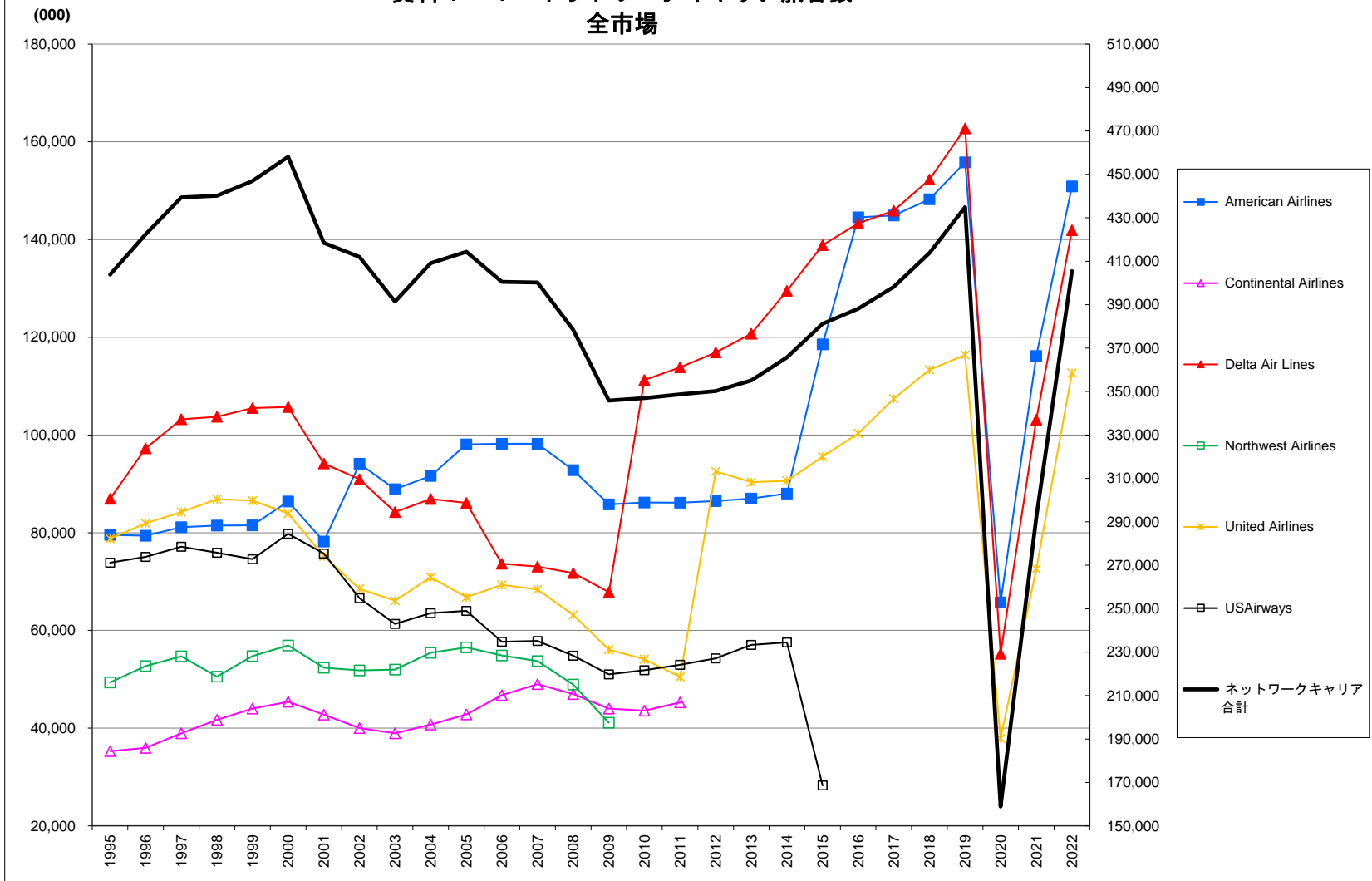
(営業費用)

資料 4-1	ネットワークキャリア営業費用額 【グラフ】	134
資料 4-2	ネットワークキャリアユニット営業費用 【グラフ】	135
資料 4-3	ネットワークキャリア営業費用額及びユニット営業費用 【表】	136
資料 4-4	LCC営業費用額 【グラフ】	137
資料 4-5	LCCユニット営業費用 【グラフ】	138
資料 4-6	LCC営業費用額及びユニット営業費用 【表】	139

(営業損益)

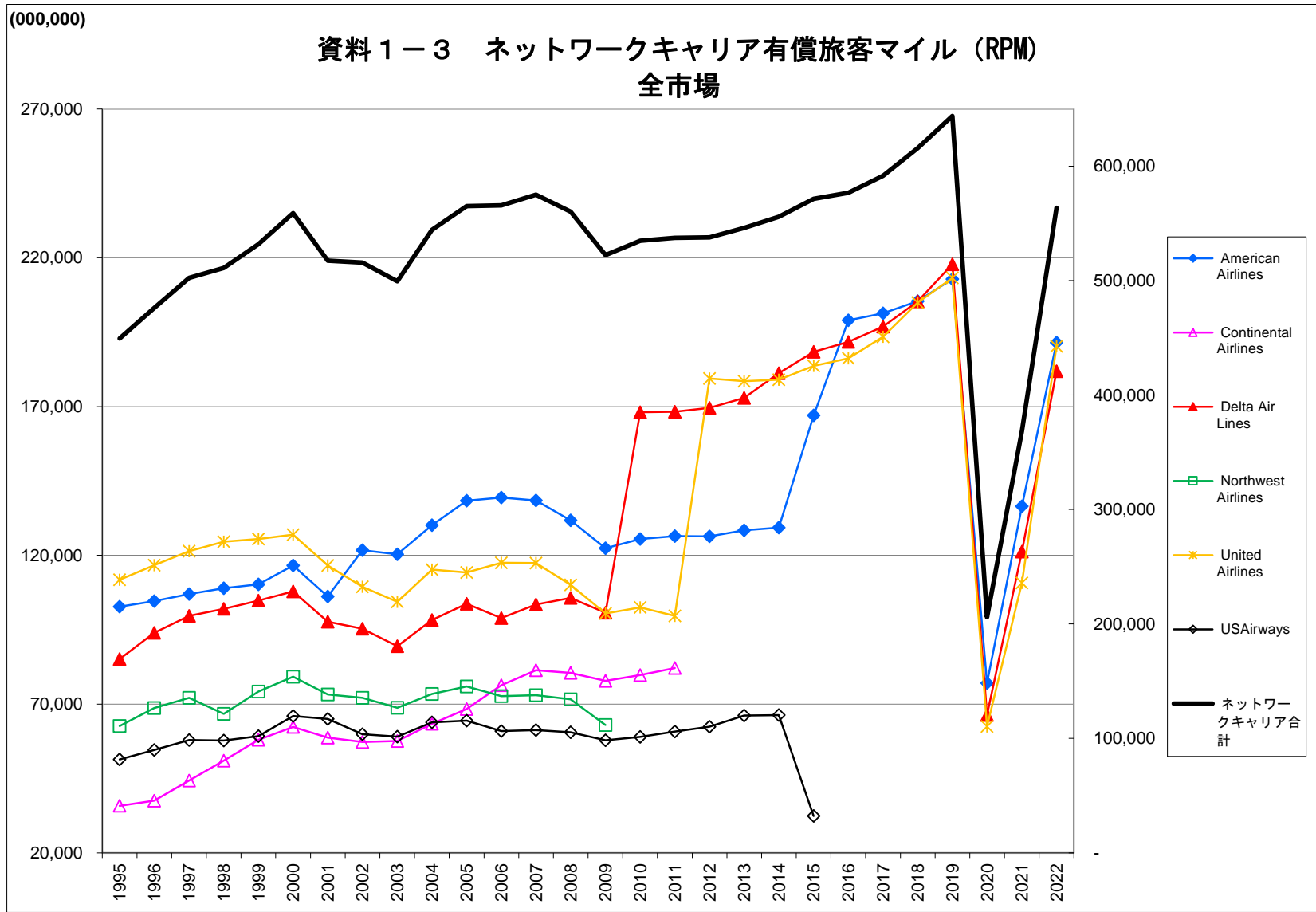
資料 5-1	ネットワークキャリア営業利益額 【グラフ】	140
資料 5-2	ネットワークキャリアユニット営業利益 【グラフ】	141
資料 5-3	ネットワークキャリア営業利益額及びユニット営業利益 【表】	142
資料 5-4	LCC営業利益額 【グラフ】	143
資料 5-5	LCCユニット営業利益 【グラフ】	144
資料 5-6	LCC営業利益額及びユニット営業利益 【表】	145

資料1-1 ネットワークキャリア旅客数
全市場



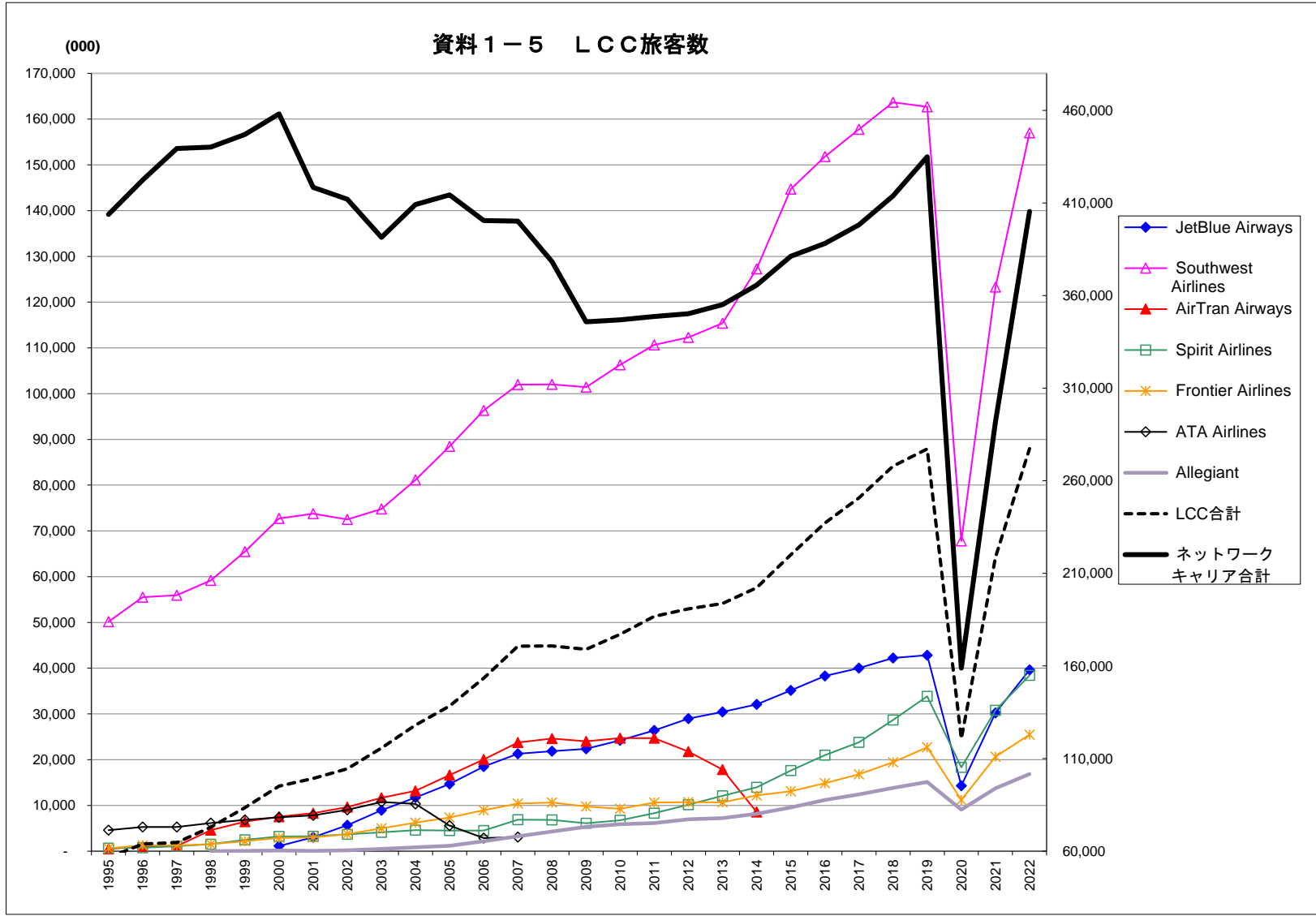
資料1-2 ネットワークキャリア旅客数

全市場(000)	1995	1996	1997	1998	1999	2000	2001	2002	2003	2004	2005	2006	2007	2008	2009	2010	2011	2012	2013	2014	2015	2016	2017	2018	2019	2020	2021	2022	
American Airlines	79,567	79,388	81,138	81,477	81,508	86,382	78,179	94,130	88,889	91,620	98,098	98,200	98,212	92,818	85,783	86,203	86,150	86,465	87,002	88,021	118,544	144,530	144,922	148,228	155,821	65,756	116,194	150,863	
Continental Airlines	35,284	35,984	38,966	41,691	44,012	45,409	42,780	40,009	39,936	40,746	42,622	46,776	49,006	46,965	44,019	43,568	45,282												
Delta Air Lines	86,963	97,269	103,208	103,725	105,529	105,709	94,180	90,924	84,246	86,902	86,105	73,655	73,051	71,728	67,852	111,236	113,857	116,910	120,718	129,519	138,854	143,305	145,897	152,267	162,736	55,199	103,146	141,909	
Northwest Airlines	49,370	52,722	54,704	50,539	54,764	56,927	52,374	51,827	51,976	55,446	56,537	54,888	53,737	48,921	41,117														
United Airlines	78,808	81,945	84,247	86,868	86,581	83,913	75,182	68,494	66,101	70,880	66,802	69,325	68,386	63,150	56,083	54,099	50,502	92,567	90,332	90,595	95,555	100,332	107,416	113,325	116,376	37,924	72,588	112,670	
US Airways	73,884	75,072	77,146	75,886	74,596	79,784	75,742	66,619	61,313	63,541	63,999	57,686	57,866	54,820	51,016	51,853	52,959	54,277	57,045	57,554	28,270								
ネットワークキャリア合計	403,876	422,380	439,409	440,186	446,991	458,125	418,437	412,004	391,461	409,135	414,363	400,529	400,258	378,401	345,870	346,960	348,750	350,219	355,097	365,688	381,224	388,167	398,235	413,820	434,933	158,879	291,927	405,443	



資料 1 - 4 ネットワークキャリア有償旅客マイル (RPM)

全市場 (000,000)	1995	1996	1997	1998	1999	2000	2001	2002	2003	2004	2005	2006	2007	2008	2009	2010	2011	2012	2013	2014	2015	2016	2017	2018	2019	2020	2021	2022		
American Airlines	102,738	104,596	107,002	108,930	110,214	116,572	106,205	121,719	120,325	130,155	138,368	139,451	138,448	131,755	122,418	125,484	126,492	126,404	128,410	129,340	167,066	199,013	201,353	205,454	212,860	77,067	136,514	191,525		
Continental Airlines	35,810	37,588	44,294	51,027	58,028	62,358	58,764	57,292	57,590	63,376	68,367	76,319	81,428	80,495	77,785	79,735	82,127	168,289	169,591	172,925	181,195	188,375	191,722	196,882	205,322	217,818	66,344	121,276	181,891	
Delta Air Lines	85,155	93,929	99,687	102,015	104,780	107,841	97,663	95,312	89,432	98,278	103,740	98,909	103,450	105,697	100,733	168,139	168,289	169,591	172,925	181,195	188,375	191,722	196,882	205,322	217,818	66,344	121,276	181,891		
Northwest Airlines	62,629	68,705	72,105	66,760	74,235	79,221	73,253	72,125	68,762	73,403	75,920	72,690	73,023	71,646	62,955															
United Airlines	111,811	116,698	121,424	124,610	125,450	126,933	116,635	109,429	104,394	115,232	114,271	117,471	117,399	110,062	100,476	102,524	99,619	179,398	178,561	178,989	183,625	186,157	193,427	204,905	213,226	62,490	110,750	190,294		
US Airways	51,393	54,563	57,952	57,744	59,262	65,993	65,044	59,912	59,067	63,837	64,410	60,919	61,255	60,567	57,885	58,972	60,774	62,430	66,160	66,301	32,395									
ネットワークキャリア合計	449,536	476,079	502,464	511,087	531,970	558,917	517,563	515,790	499,569	544,282	565,076	565,758	575,004	560,222	522,251	534,855	537,301	537,823	546,056	555,825	571,461	576,892	591,663	615,681	643,904	205,901	368,541	563,710		

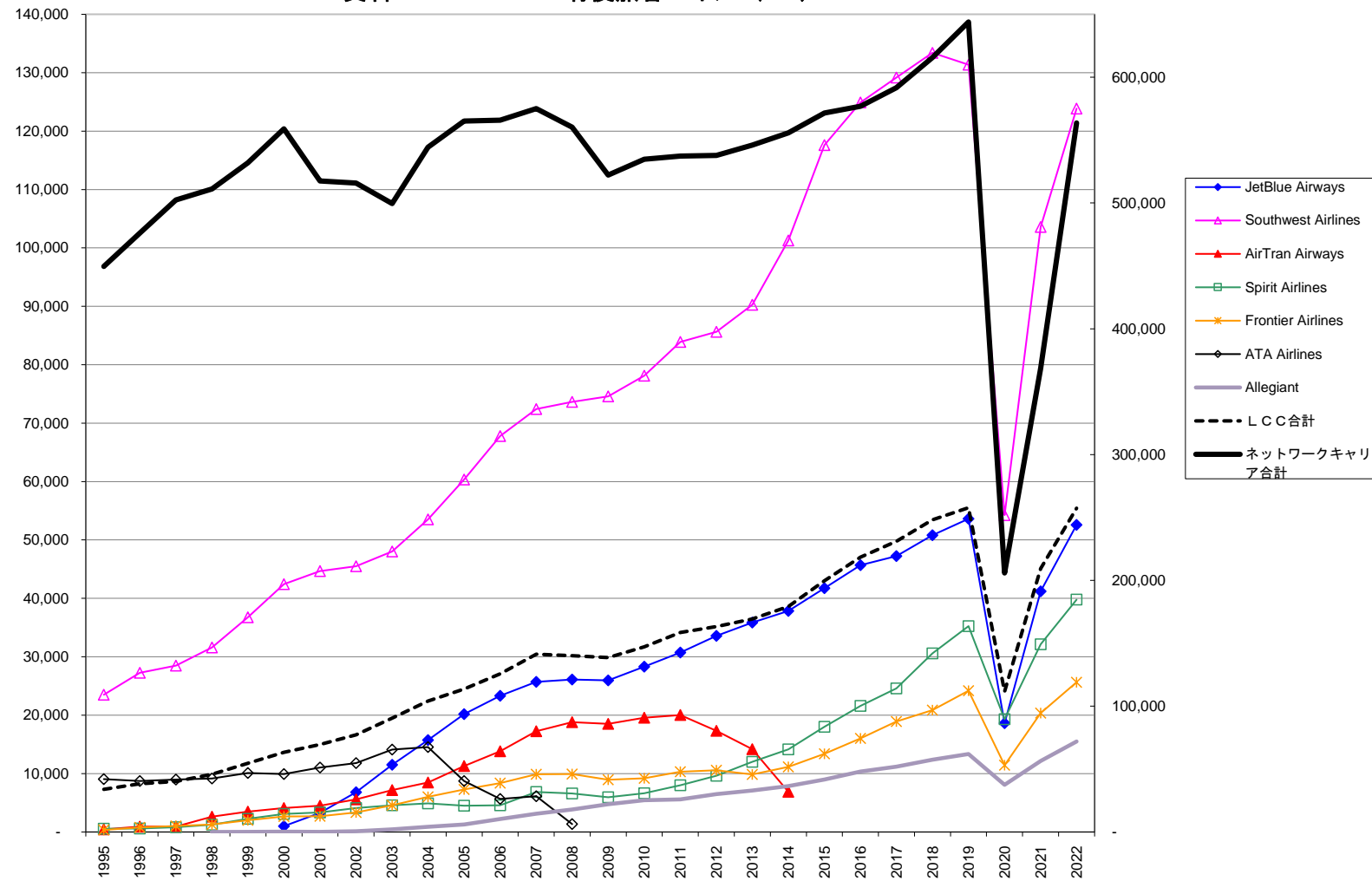


資料1-6 LCC旅客数

金単位(000)	1995	1996	1997	1998	1999	2000	2001	2002	2003	2004	2005	2006	2007	2008	2009	2010	2011	2012	2013	2014	2015	2016	2017	2018	2019	2020	2021	2022	
JetBlue Airways					1,128	3,056	5,673	8,950	11,732	14,681	18,507	21,305	21,863	22,392	24,217	26,373	28,967	30,459	32,102	35,131	38,309	40,017	42,236	42,837	14,308	30,243	39,631		
Southwest Airlines	50,151	55,491	55,957	59,177	65,496	72,710	73,743	72,516	74,798	81,150	88,474	96,349	101,990	102,042	101,430	106,307	110,646	112,305	115,404	127,284	144,678	151,828	157,766	163,684	162,712	67,792	123,280	157,008	
AirTran Airways	498	1,075	1,085	4,590	6,458	7,547	8,303	9,660	11,658	13,178	16,619	20,047	23,761	24,619	23,998	24,721	24,705	21,765	17,842	8,572									
Spirit Airlines	678	750	1,093	1,551	2,496	3,221	3,274	3,687	4,111	4,593	4,508	4,527	6,903	6,820	6,089	6,751	8,296	10,176	12,098	13,979	17,629	20,998	23,813	28,683	33,868	18,311	30,770	38,408	
Frontier Airlines	611	1,283	1,278	1,530	2,176	2,893	2,998	3,736	5,001	6,227	7,350	8,934	10,400	10,641	9,795	9,242	10,619	10,702	10,673	12,170	13,104	14,866	16,800	19,433	22,703	11,203	20,655	25,464	
ATA Airlines	4,594	5,292	5,269	6,145	6,833	7,421	7,815	9,022	10,752	10,341	5,587	2,879	3,065	514															
Allegiant				13	57	157	67	189	485	841	1,204	2,187	3,272	4,292	5,320	5,882	6,148	6,974	7,242	8,188	9,560	11,199	12,397	13,847	15,122	9,086	13,735	16,869	
LCC合計	56,532	63,892	64,683	73,005	83,505	95,078	99,256	104,483	115,745	128,062	138,422	153,430	170,695	170,791	169,023	177,120	186,788	190,889	193,718	202,295	220,102	237,199	250,793	267,884	277,242	120,700	218,683	277,378	
ネットワークキャリア合計	403,876	422,380	439,409	440,186	446,991	458,125	478,437	472,004	391,461	409,135	414,363	400,529	400,258	378,401	345,870	346,960	348,750	350,219	355,097	365,688	381,224	388,167	398,235	413,820	434,833	158,879	291,927	405,443	

(000,000)

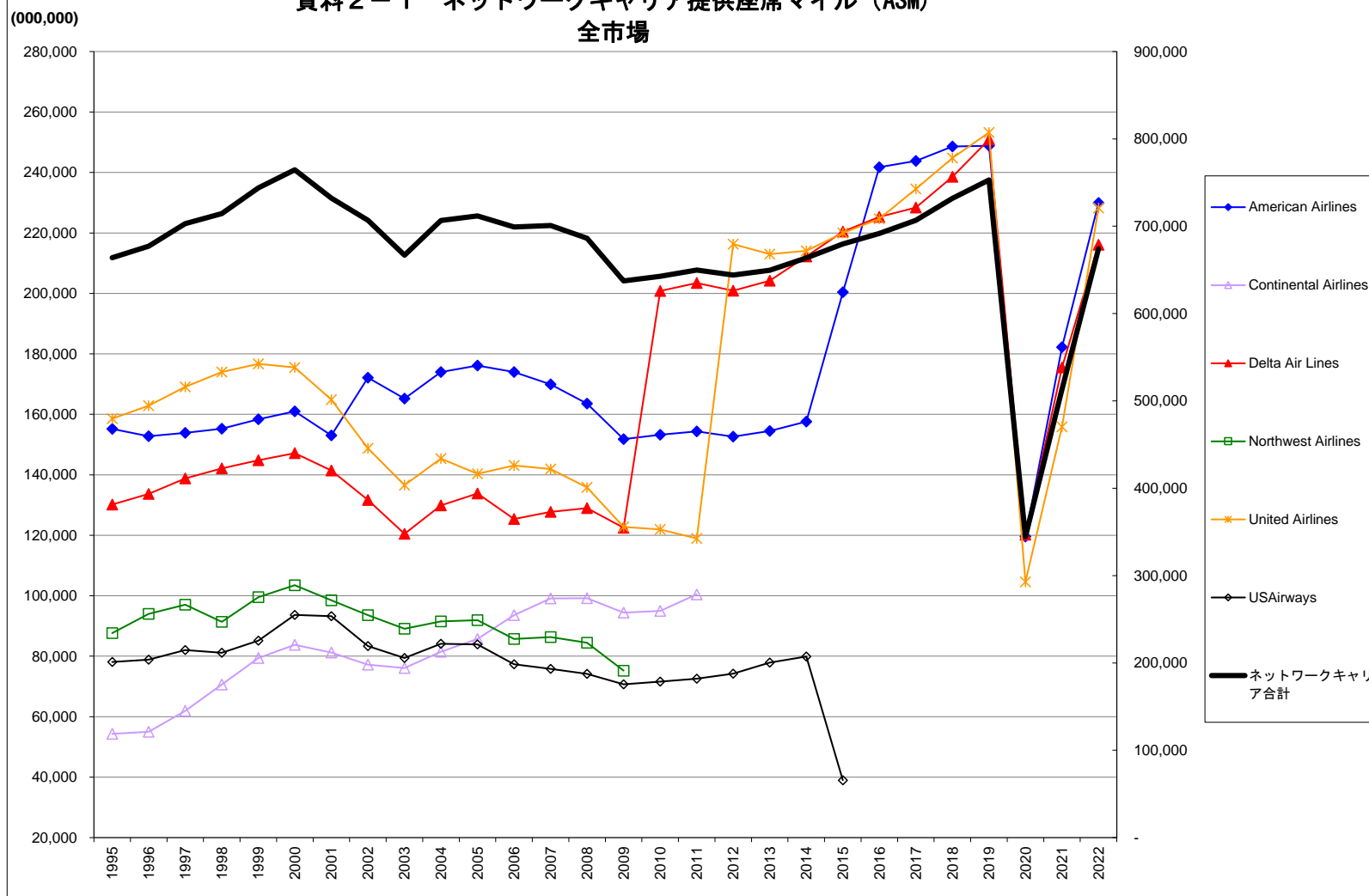
資料1-7 LCC有償旅客マイル (RPM)



資料1-8 LCC有償旅客マイル(RPM)

全米圏(000,000)	1995	1996	1997	1998	1999	2000	2001	2002	2003	2004	2005	2006	2007	2008	2009	2010	2011	2012	2013	2014	2015	2016	2017	2018	2019	2020	2021	2022	
JetBlue Airways						1,003	3,277	6,820	11,519	15,721	20,187	23,310	25,722	26,090	25,959	28,290	30,710	33,577	35,855	37,838	41,751	45,675	47,249	50,819	53,620	18,610	41,193	52,579	
Southwest Airlines	23,501	27,265	28,505	31,588	36,768	42,439	44,664	45,503	48,035	53,524	60,346	67,782	72,410	73,640	74,572	78,135	83,912	85,641	90,266	101,275	117,616	124,900	129,150	133,411	131,380	54,230	103,582	123,866	
AirTran Airways	443	933	931	2,628	3,472	4,111	4,509	5,586	7,165	8,485	11,304	13,814	17,252	18,789	18,512	19,564	20,019	17,326	14,195	6,868									
Spirit Airlines	549	598	819	1,237	2,247	3,081	3,354	4,103	4,552	4,888	4,517	4,551	6,855	6,599	5,940	6,627	8,007	9,621	12,000	14,159	17,996	21,583	24,604	30,592	35,245	19,316	32,126	39,779	
Frontier Airlines	347	783	1,028	1,287	1,994	2,671	2,710	3,362	4,565	6,014	7,285	8,360	9,893	9,933	8,931	9,200	10,330	10,586	9,858	11,154	13,395	16,009	18,909	20,875	24,191	11,435	20,365	25,644	
ATA Airlines	9,064	8,745	8,981	9,175	10,104	9,904	11,023	11,809	14,120	14,536	8,720	5,661	6,142	1,344															
Allegiant				4	16	50	23	140	447	895	1,284	2,235	3,115	3,833	4,738	5,432	5,602	6,496	7,108	7,857	8,994	10,342	11,174	12,385	13,340	8,087	12,175	15,499	
LCC合計	33,904	38,313	40,264	45,918	54,601	63,259	69,561	77,323	90,433	104,065	113,644	125,724	141,391	140,228	138,651	147,247	158,579	163,248	169,282	179,151	199,751	218,510	231,087	248,082	257,776	111,676	209,440	257,366	
ネットワークキャリア合計	449,536	476,079	502,464	511,087	531,970	558,917	517,563	515,790	499,569	544,282	565,076	565,758	575,004	560,222	522,251	534,855	537,301	537,823	546,056	555,825	571,461	576,892	591,663	615,681	643,904	205,901	368,541	563,710	

資料2-1 ネットワークキャリア提供座席マイル (ASM)
全市場

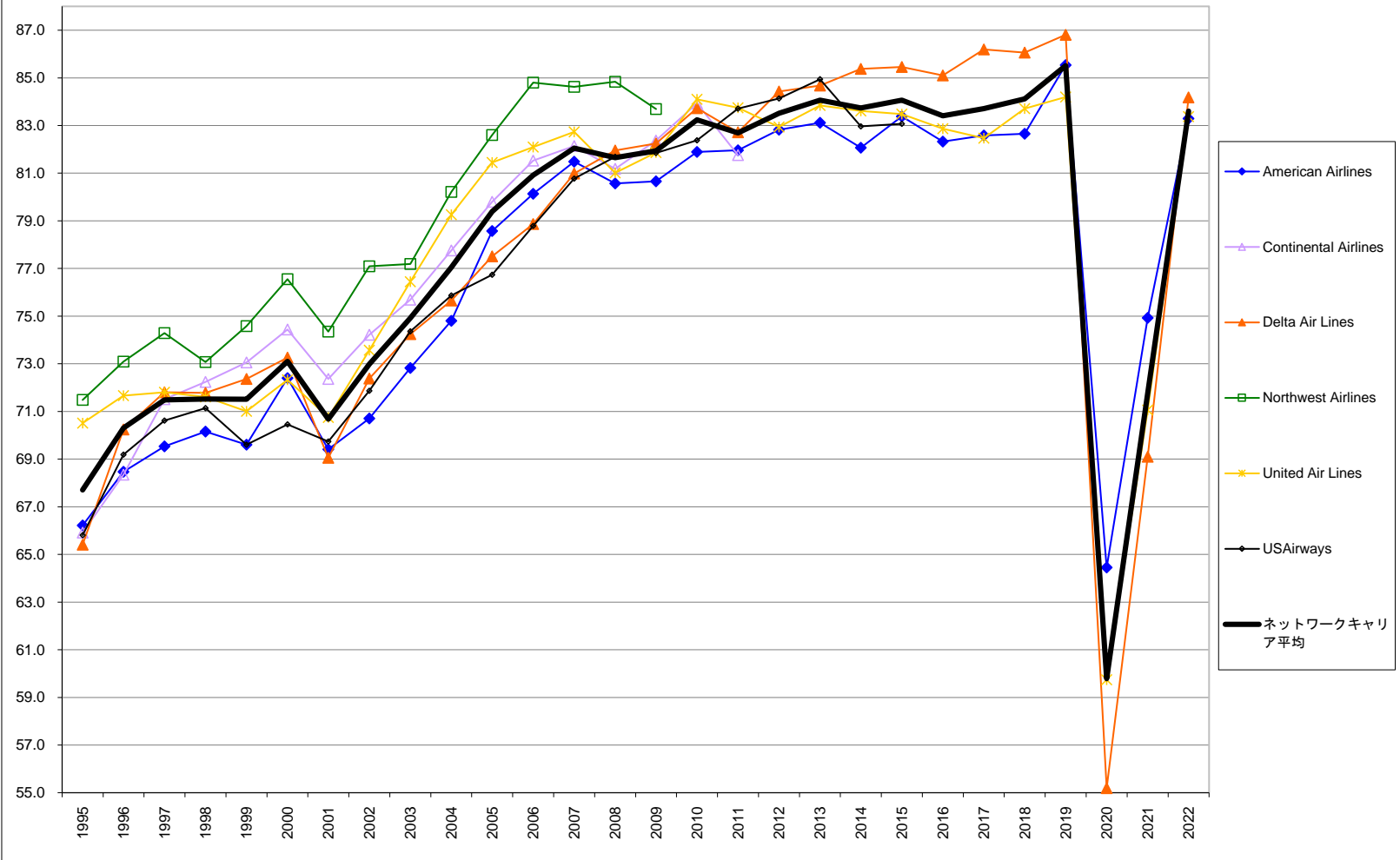


資料2-2 ネットワークキャリア提供座席マイル(ASM)

全市場 (000,000)	1995	1996	1997	1998	1999	2000	2001	2002	2003	2004	2005	2006	2007	2008	2009	2010	2011	2012	2013	2014	2015	2016	2017	2018	2019	2020	2021	2022	
American Airlines	155,152	152,763	153,883	155,266	158,334	161,006	153,009	172,155	165,214	174,002	176,102	174,016	169,901	163,529	151,772	153,238	154,323	152,627	154,497	157,598	200,373	241,732	243,824	248,574	248,841	119,578	182,191	229,938	
Continental Airlines	54,326	54,998	61,940	70,635	79,434	83,771	81,203	77,193	76,086	81,506	85,675	83,614	89,135	99,152	94,428	95,000	100,454												
Delta Air Lines	130,179	133,716	138,830	142,126	144,792	147,198	141,419	131,882	120,455	129,907	133,847	125,418	127,744	128,976	122,479	200,809	203,453	200,880	204,210	212,235	220,437	225,276	228,416	238,588	250,915	120,208	175,505	216,081	
Northwest Airlines	87,613	94,001	97,066	91,354	99,538	103,486	98,524	93,561	89,077	91,510	91,915	85,716	86,291	84,450	75,223														
United Airlines	158,569	162,843	169,107	174,008	176,667	175,495	164,848	148,748	136,566	145,388	140,294	143,085	141,896	135,859	122,738	121,912	118,948	216,299	212,977	214,061	219,956	224,653	234,547	244,771	253,248	104,599	155,846	228,247	
USAirways	78,093	78,856	82,062	81,169	85,141	93,664	93,265	83,360	79,436	84,145	83,934	77,322	75,832	74,148	70,721	71,582	72,598	74,204	77,891	79,913	38,995								
ネットワークキャリア合計	663,932	677,177	702,888	714,558	743,906	764,620	732,268	706,699	666,834	706,458	711,766	699,172	700,800	686,114	637,361	642,541	649,776	644,010	649,574	663,807	679,761	691,661	706,787	731,933	753,004	344,384	513,541	674,266	

資料2-3 ネットワークキャリア座席利用率
全市場

(%)

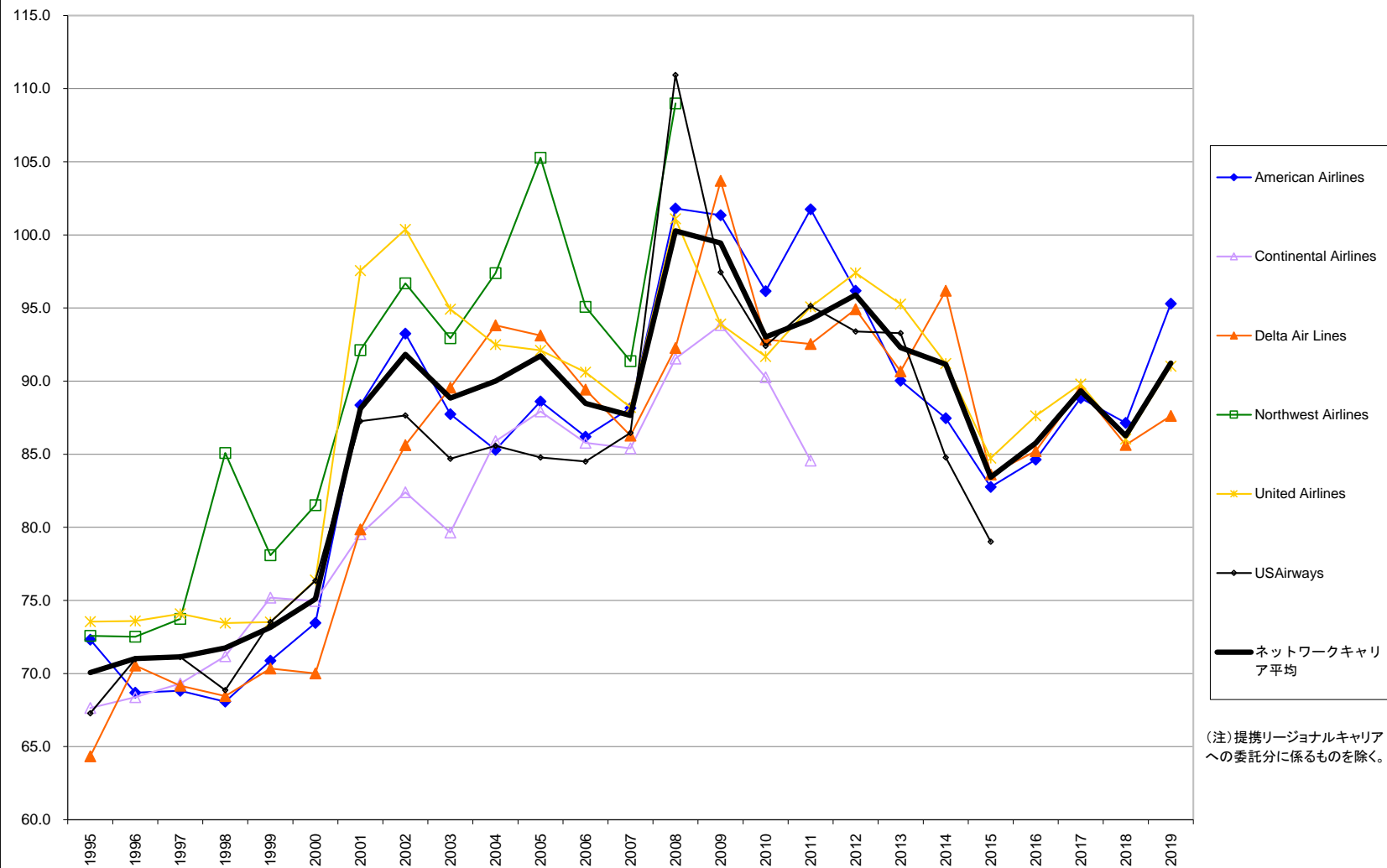


資料 2 - 4 ネットワークキャリア座席利用率

全市場 (%)	1995	1996	1997	1998	1999	2000	2001	2002	2003	2004	2005	2006	2007	2008	2009	2010	2011	2012	2013	2014	2015	2016	2017	2018	2019	2020	2021	2022	
American Airlines	66.2	68.5	69.5	70.2	69.6	72.4	69.4	70.7	72.8	74.8	78.6	80.1	81.5	80.6	80.7	81.9	82.0	82.8	83.1	82.1	83.4	82.3	82.6	82.7	85.5	64.4	74.9	83.3	
Continental Airlines	65.9	68.3	71.5	72.2	73.1	74.4	72.4	74.2	77.8	79.8	81.5	82.1	81.2	82.4	83.9	81.8													
Delta Air Lines	65.4	70.2	71.9	71.9	72.4	73.3	69.1	72.4	74.2	75.7	77.5	79.9	81.0	82.0	82.2	83.7	82.7	84.4	84.7	85.4	85.5	85.1	86.2	86.1	86.8	55.2	69.1	84.2	
Northwest Airlines	71.5	73.1	74.3	73.1	74.6	76.6	74.4	77.1	77.2	80.2	82.6	84.8	84.6	84.8	83.7														
United Air Lines	70.5	71.7	71.8	71.6	71.0	72.3	70.8	73.6	76.4	79.3	81.5	82.1	82.7	81.0	81.9	84.1	83.7	82.9	83.8	83.6	83.5	82.9	82.5	83.7	84.2	59.7	71.1	83.4	
US Airways	65.8	69.2	70.6	71.1	69.6	70.5	69.7	71.9	74.4	75.9	76.7	78.8	80.8	81.7	81.9	82.4	83.7	84.1	84.9	83.0	83.1								
ネットワークキャリア平均	67.7	70.3	71.5	71.5	71.5	73.1	70.7	73.0	74.9	77.0	79.4	80.9	82.0	81.7	81.9	83.2	82.7	83.5	84.1	83.7	84.1	83.4	83.7	84.1	85.5	59.8	71.8	83.6	

資料2-5 ネットワークキャリア損益均衡座席利用率
全市場

(%)



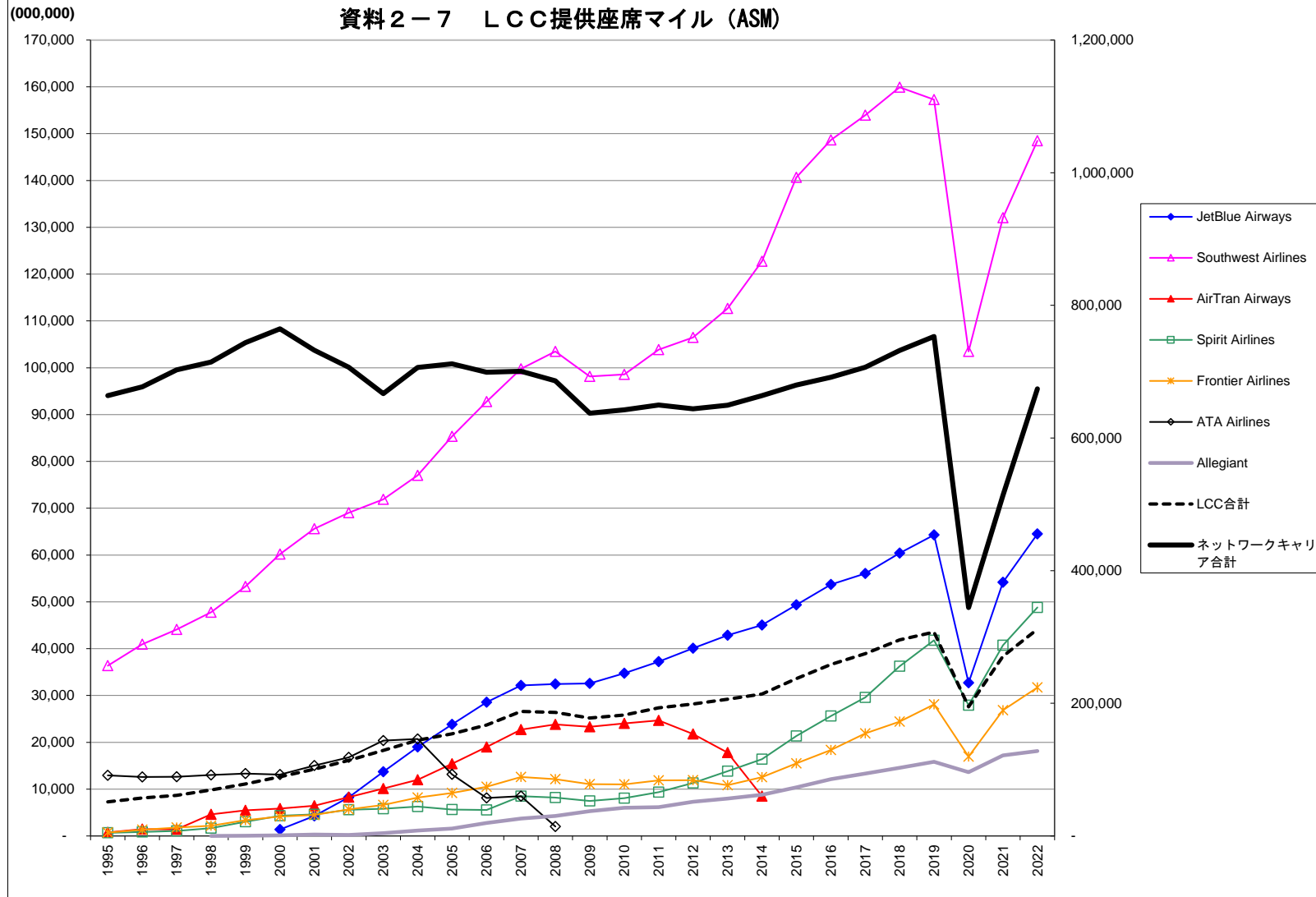
(注) 提携リージョナルキャリアへの委託分に係るものを除く。

資料 2-6 ネットワークキャリア損益均等座席利用率

全市場 (%)	1995	1996	1997	1998	1999	2000	2001	2002	2003	2004	2005	2006	2007	2008	2009	2010	2011	2012	2013	2014	2015	2016	2017	2018	2019	2020	2021	2022	
American Airlines	72.3	68.7	68.8	68.1	70.9	73.5	88.4	93.2	87.7	85.3	88.6	86.2	88.2	101.8	101.3	96.1	101.7	96.2	90.0	87.5	82.8	84.6	88.8	87.1	95.3	168.9	110.9	95.4	
Continental Airlines	67.6	68.4	69.3	71.2	75.2	75.0	79.5	82.4	79.6	85.9	87.9	85.8	85.4	91.5	93.8	90.3	84.6												
Delta Air Lines	64.3	70.5	69.2	68.5	70.3	70.0	79.9	85.6	89.6	93.8	93.1	89.4	86.3	92.3	103.7	92.8	92.5	94.9	90.7	96.2	83.6	85.2	89.5	85.6	87.6	114.3	78.3	83.3	
Northwest Airlines	72.6	72.5	73.7	85.1	78.1	81.5	92.1	96.7	92.9	97.4	105.3	95.1	91.4	109.0	106.2														
United Airlines	73.5	73.8	74.1	73.5	73.5	76.4	97.6	100.4	94.9	92.5	92.1	90.6	88.2	101.1	93.9	91.7	95.1	97.4	95.3	91.2	84.7	87.6	89.8	86.0	91.0	155.9	104.6	84.6	
USAirways	67.3	71.0	71.1	68.9	73.5	76.4	87.3	87.6	84.7	85.6	84.8	84.5	86.5	110.9	97.4	82.4	95.1	93.4	93.3	84.8	79.0								
ネットワークキャリア平均	70.1	71.0	71.1	71.7	73.1	75.1	88.1	91.8	88.8	90.0	91.7	88.5	87.7	100.3	99.4	93.0	94.2	95.9	92.3	91.1	83.4	85.8	89.3	86.3	91.2	145.1	97.3	87.8	

*運輸関連収入及び費用を除く

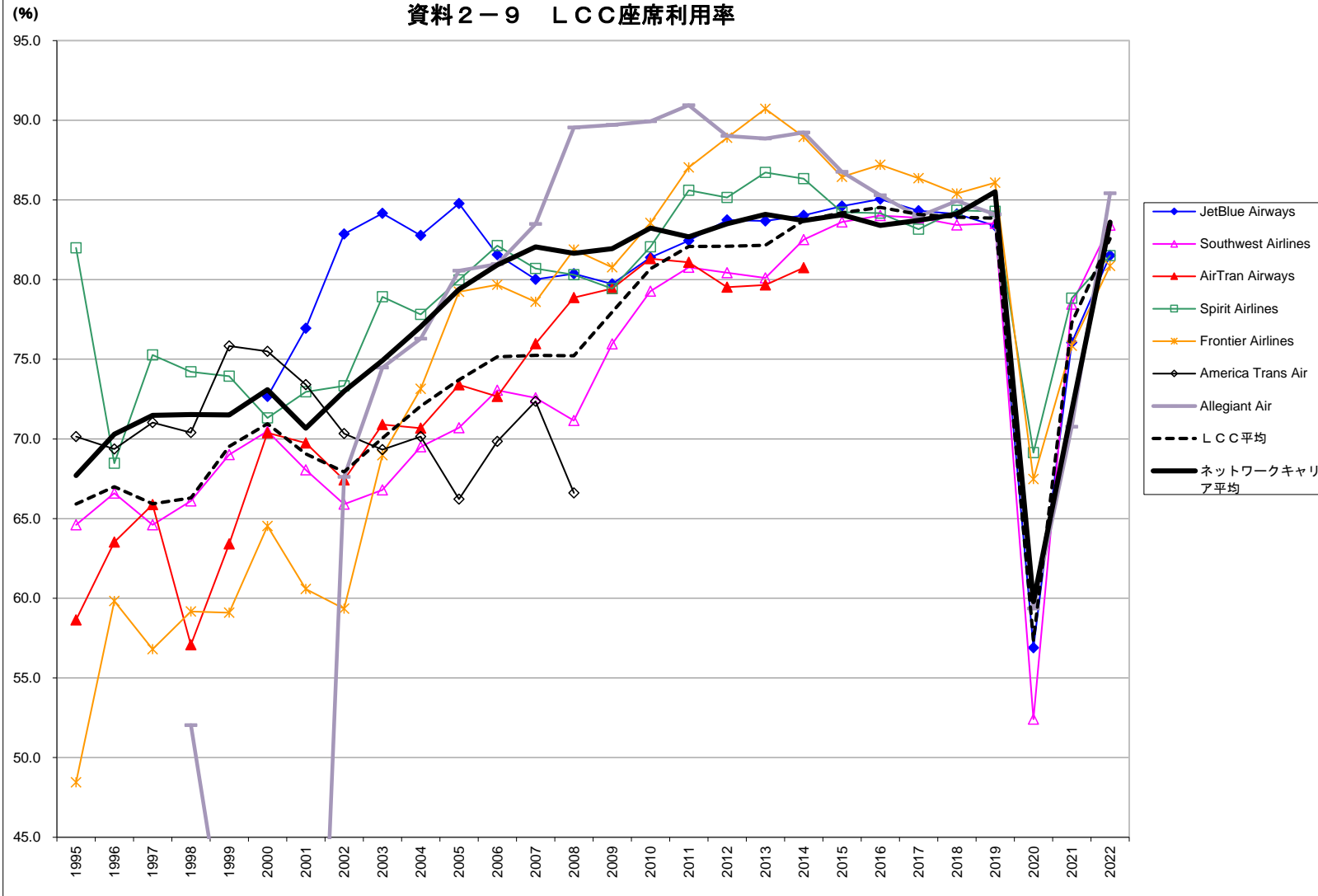
資料 2-7 LCC提供座席マイル (ASM)



資料2-8 LCC提供座席マイル(ASM)

(000,000)	1995	1996	1997	1998	1999	2000	2001	2002	2003	2004	2005	2006	2007	2008	2009	2010	2011	2012	2013	2014	2015	2016	2017	2018	2019	2020	2021	2022	
JetBlue Airways						1,380	4,260	8,231	13,689	18,992	23,815	28,581	32,148	32,465	32,563	34,758	37,248	40,095	42,852	45,028	49,347	53,705	56,039	60,409	64,311	32,710	54,167	64,504	
Southwest Airlines	36,373	40,943	44,116	47,782	53,277	60,213	65,623	69,048	71,911	77,006	85,354	92,785	99,767	103,486	98,171	98,558	103,891	106,486	112,683	122,753	140,671	148,658	153,966	159,920	157,297	103,470	132,030	148,495	
AirTran Airways	756	1,469	1,414	4,604	5,475	5,841	6,465	8,286	10,105	12,005	15,401	19,011	22,706	23,821	23,305	24,060	24,689	21,786	17,819	8,506									
Spirit Airlines	669	858	1,088	1,667	3,039	4,321	4,598	5,594	5,805	6,282	5,648	5,553	8,497	8,218	7,478	8,076	9,353	11,299	13,837	16,401	21,364	25,641	29,585	36,270	41,817	27,938	40,753	48,811	
Frontier Airlines	717	1,309	1,810	2,174	3,373	4,140	4,474	5,665	6,618	8,222	9,195	10,493	12,585	12,131	11,057	11,011	11,868	11,909	10,867	12,539	15,496	18,359	21,895	24,444	28,104	16,946	26,851	31,714	
ATA Airlines	12,922	12,606	12,643	13,033	13,325	13,117	15,017	16,790	20,368	20,724	13,168	8,106	8,489	2,018															
Allegiant			7	44	142	293	207	601	1,174	1,594	2,751	3,731	4,280	5,281	6,040	6,159	7,297	8,000	8,806	10,365	12,125	13,310	14,581	15,863	13,623	17,204	18,145		
LCC合計	51,437	57,184	61,072	69,267	78,534	89,153	100,729	113,821	129,096	144,405	154,175	167,289	187,922	186,418	177,855	182,503	193,208	198,871	206,058	214,033	237,242	258,487	274,796	295,625	307,392	194,686	271,005	311,669	
ネットワークキャリア合計	663,932	677,177	702,888	714,558	743,906	764,620	732,268	706,699	666,834	706,458	711,766	699,172	700,800	686,114	637,361	642,541	649,776	644,010	649,574	663,807	679,761	691,661	706,767	731,933	753,004	344,384	513,541	674,266	

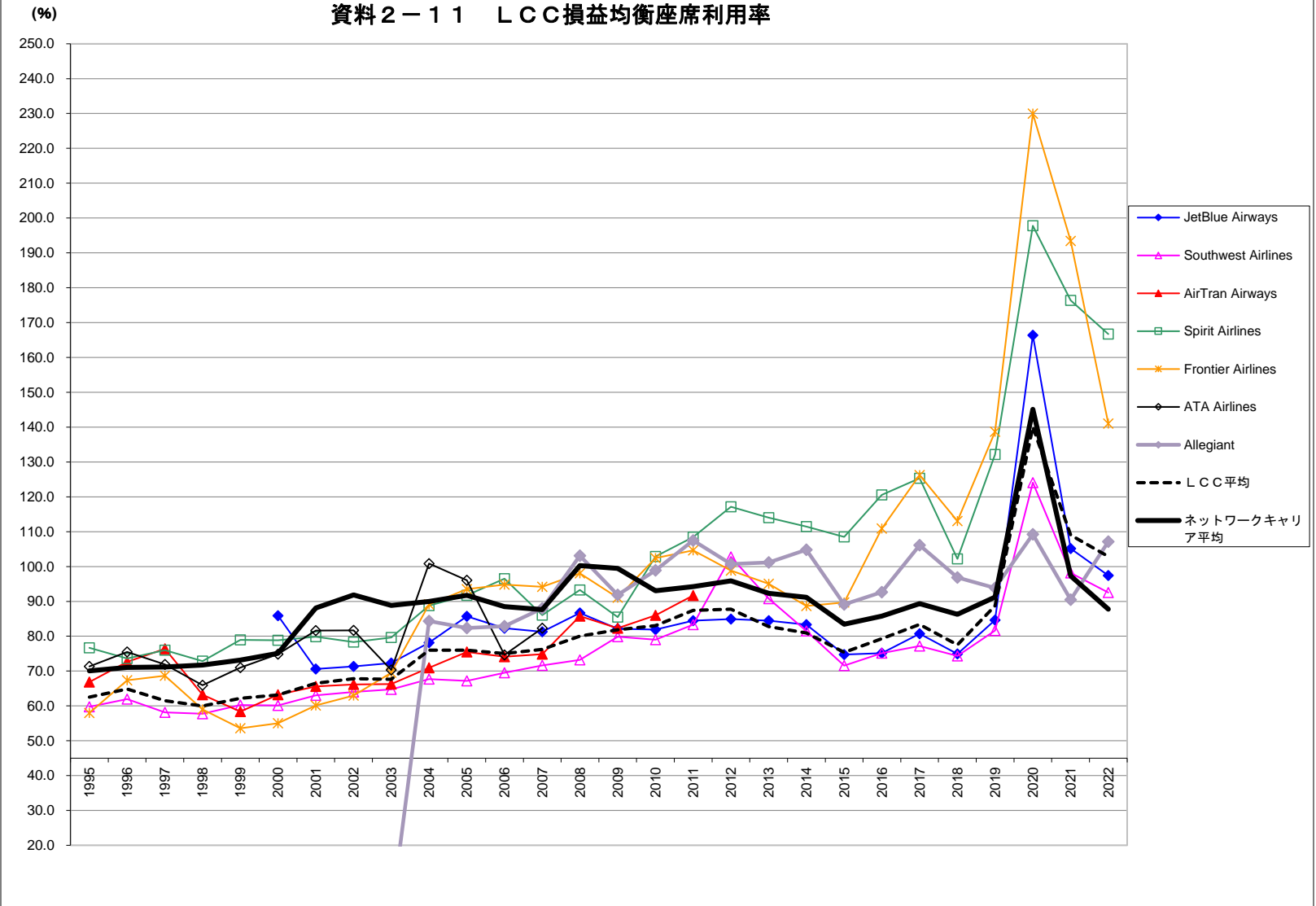
資料2-9 LCC座席利用率



資料 2 - 10 LCC座席利用率

(%)	1995	1996	1997	1998	1999	2000	2001	2002	2003	2004	2005	2006	2007	2008	2009	2010	2011	2012	2013	2014	2015	2016	2017	2018	2019	2020	2021	2022	
JetBlue Airways						72.7	76.9	82.9	84.2	82.8	84.8	81.6	80.0	80.4	79.7	81.4	82.4	83.7	83.7	84.0	84.6	85.0	84.3	84.1	83.4	56.9	76.0	81.5	
Southwest Airlines	64.6	66.6	64.6	66.1	69.0	70.5	68.1	65.9	66.8	69.5	70.7	73.1	72.6	71.2	76.0	79.3	80.8	80.4	80.1	82.5	83.6	84.0	83.9	83.4	83.5	52.4	78.5	83.4	
AirTran Airways	58.6	63.5	65.9	57.1	63.4	70.4	69.7	67.4	70.9	70.7	73.4	72.7	76.0	78.9	79.4	81.3	81.1	79.5	79.7	80.7									
Spirit Airlines	82.0	68.5	75.3	74.2	73.9	71.3	73.0	73.3	78.9	77.8	80.0	82.1	80.7	80.3	79.4	82.1	85.6	85.1	86.7	86.3	84.2	84.2	83.2	84.3	84.3	69.1	78.8	81.5	
Frontier Airlines	48.5	59.8	56.8	59.2	59.1	64.5	60.6	59.3	69.0	73.1	79.2	79.7	78.6	81.9	80.8	83.5	87.0	88.9	90.7	89.0	86.4	87.2	86.4	85.4	86.1	67.5	75.8	80.9	
America Trans Air	70.1	69.4	71.0	70.4	75.8	75.5	73.4	70.3	69.3	70.1	66.2	69.8	72.4	66.6															
Allegiant Air				52.0	37.0	35.5	8.0	67.6	74.5	76.3	80.6	81.0	83.5	89.5	89.7	89.9	90.9	89.0	88.8	89.2	86.8	85.3	84.0	84.9	84.1	59.4	70.8	85.4	
LCC平均	65.9	67.0	65.9	66.3	69.5	71.0	69.1	67.9	70.1	72.1	73.7	75.2	75.2	75.2	78.0	80.7	82.1	82.1	82.2	83.7	84.2	84.5	84.1	83.9	83.9	83.9	57.4	77.3	82.6
ネットワークキャリア平均	67.7	70.3	71.5	71.5	71.5	73.1	70.7	73.0	74.9	77.0	79.4	80.9	82.0	81.7	81.9	83.2	82.7	83.5	84.1	83.7	84.1	83.4	83.7	84.1	85.5	59.8	71.8	83.6	

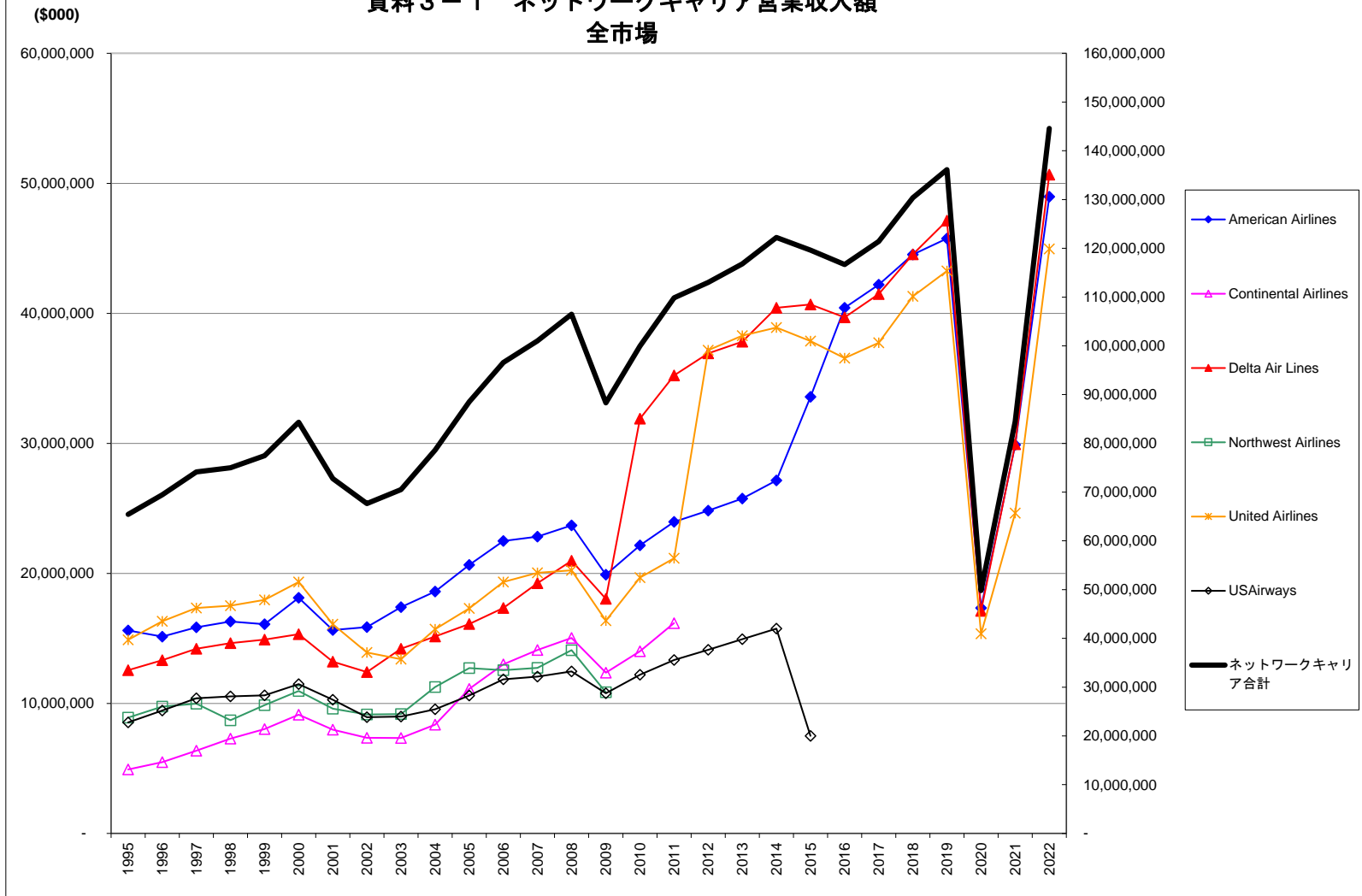
資料 2-11 LCC 損益均衡座席利用率



資料 2 - 1 2 L C C 損益均等座席利用率

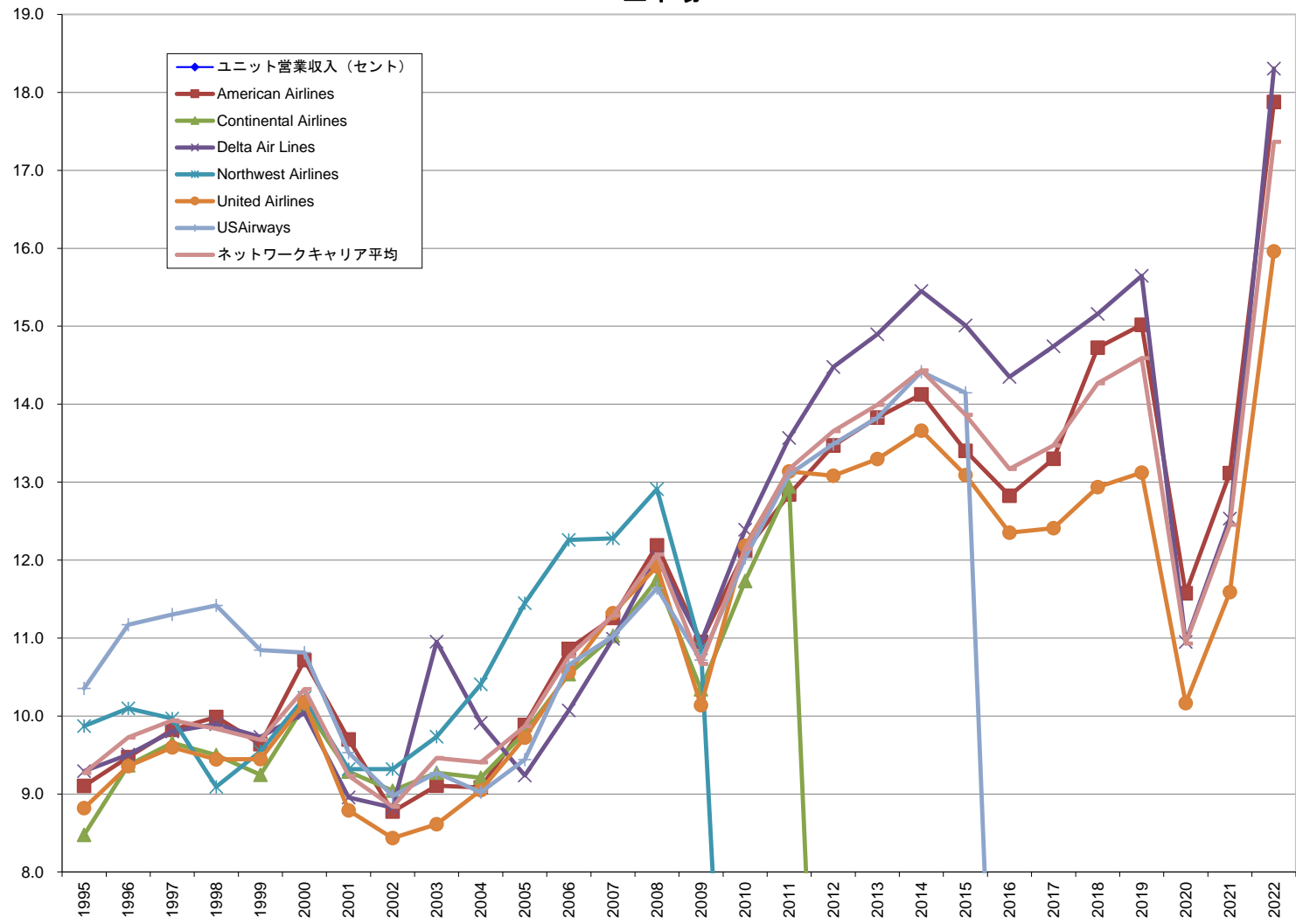
(%)	1995	1996	1997	1998	1999	2000	2001	2002	2003	2004	2005	2006	2007	2008	2009	2010	2011	2012	2013	2014	2015	2016	2017	2018	2019	2020	2021	2022	
JetBlue Airways						85.9	70.6	71.3	72.3	78.2	85.7	82.3	81.3	86.7	82.1	81.9	84.4	84.9	84.5	83.3	74.7	75.1	80.7	74.9	84.6	166.3	105.2	97.4	
Southwest Airlines	59.7	61.9	58.1	57.7	60.2	60.1	63.0	64.0	64.8	67.7	67.2	69.5	71.6	73.2	79.9	79.0	83.3	102.8	90.8	81.5	71.6	75.1	77.2	74.3	81.6	124.1	98.2	92.5	
AirTran Airways	66.9	72.6	76.4	63.2	58.4	63.2	65.6	66.2	66.3	70.9	75.5	74.1	74.8	85.8	82.3	86.0	91.7												
Spirit Airlines	76.7	73.6	76.0	72.8	78.9	78.8	79.9	78.3	79.6	88.8	91.8	96.5	86.1	93.2	85.5	102.9	108.4	117.2	114.0	111.4	108.5	120.5	125.3	102.2	132.1	197.8	176.4	166.7	
Frontier Airlines	58.0	67.4	68.6	59.0	53.6	55.0	60.1	63.0	69.5	89.1	93.5	94.8	94.2	98.0	91.0	102.4	104.6	98.8	95.0	88.7	89.7	110.9	126.2	113.1	138.7	230.0	193.4	141.0	
ATA Airlines	71.3	75.5	71.9	65.9	71.0	74.9	81.6	81.7	70.3	100.9	96.1	74.6	82.3																
Allegiant										84.3	82.3	82.9	88.0	103.1	91.9	98.9	107.5	100.7	101.2	104.8	89.1	92.6	106.1	96.9	93.8	109.3	90.5	107.1	
L C C 平均	62.5	64.8	61.5	60.0	62.2	63.2	66.5	67.8	67.6	76.0	76.0	75.0	76.2	80.0	81.9	83.1	87.4	87.8	82.8	80.9	75.4	79.3	83.4	77.5	88.7	140.0	109.0	102.9	
ネットワークキャリア平均	70.1	71.0	71.1	71.7	73.1	75.1	88.1	91.8	88.8	90.0	91.7	88.5	87.7	100.3	99.4	93.0	94.2	95.9	92.3	91.1	83.4	85.8	89.3	86.3	91.2	145.1	97.3	87.8	

資料3-1 ネットワークキャリア営業収入額
全市場



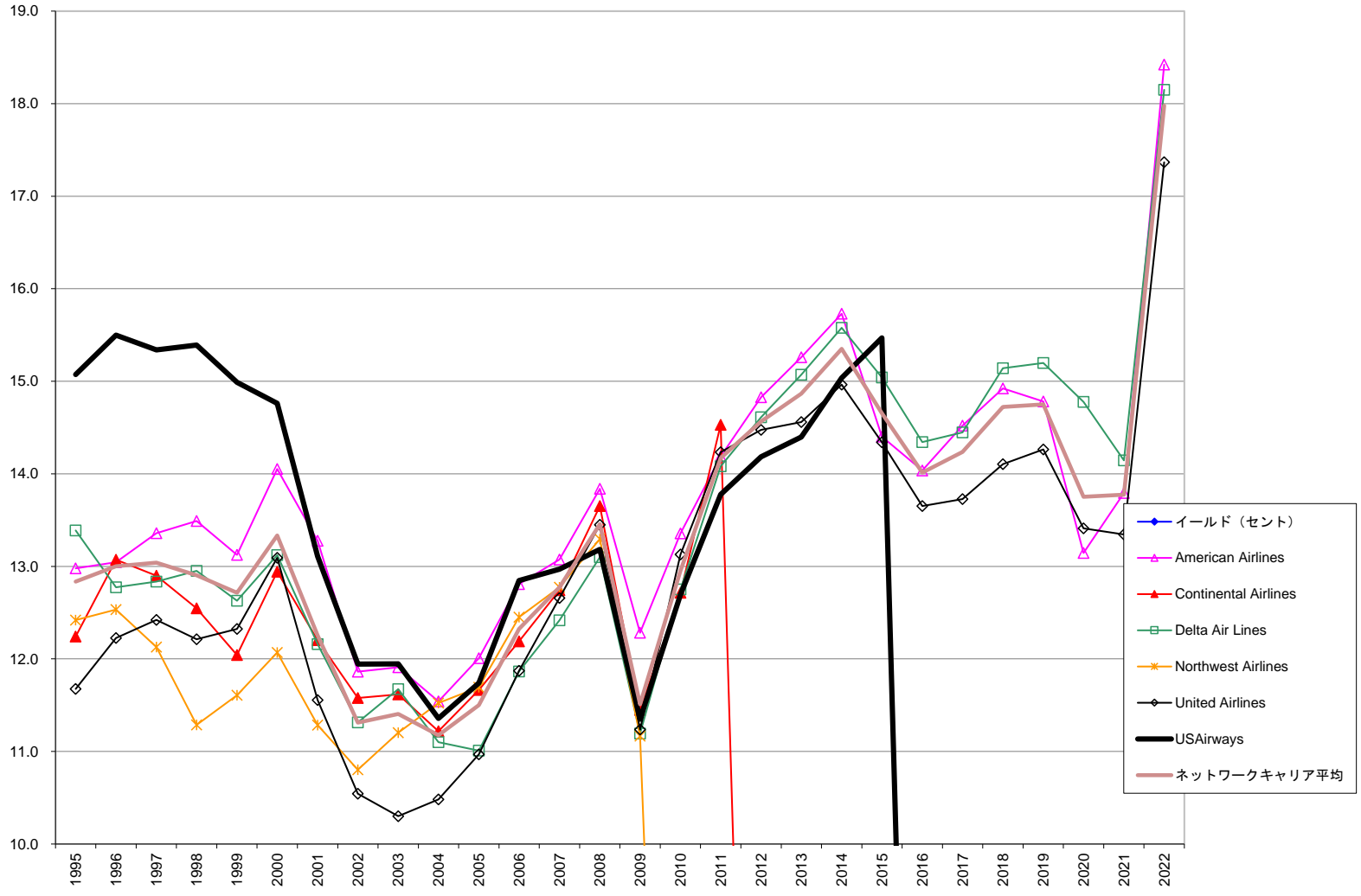
(c)

資料3-2 ネットワークキャリアユニット営業収入 全市場



(注)提携リージョナル
キャリアへの委託分に
係るものを除く。

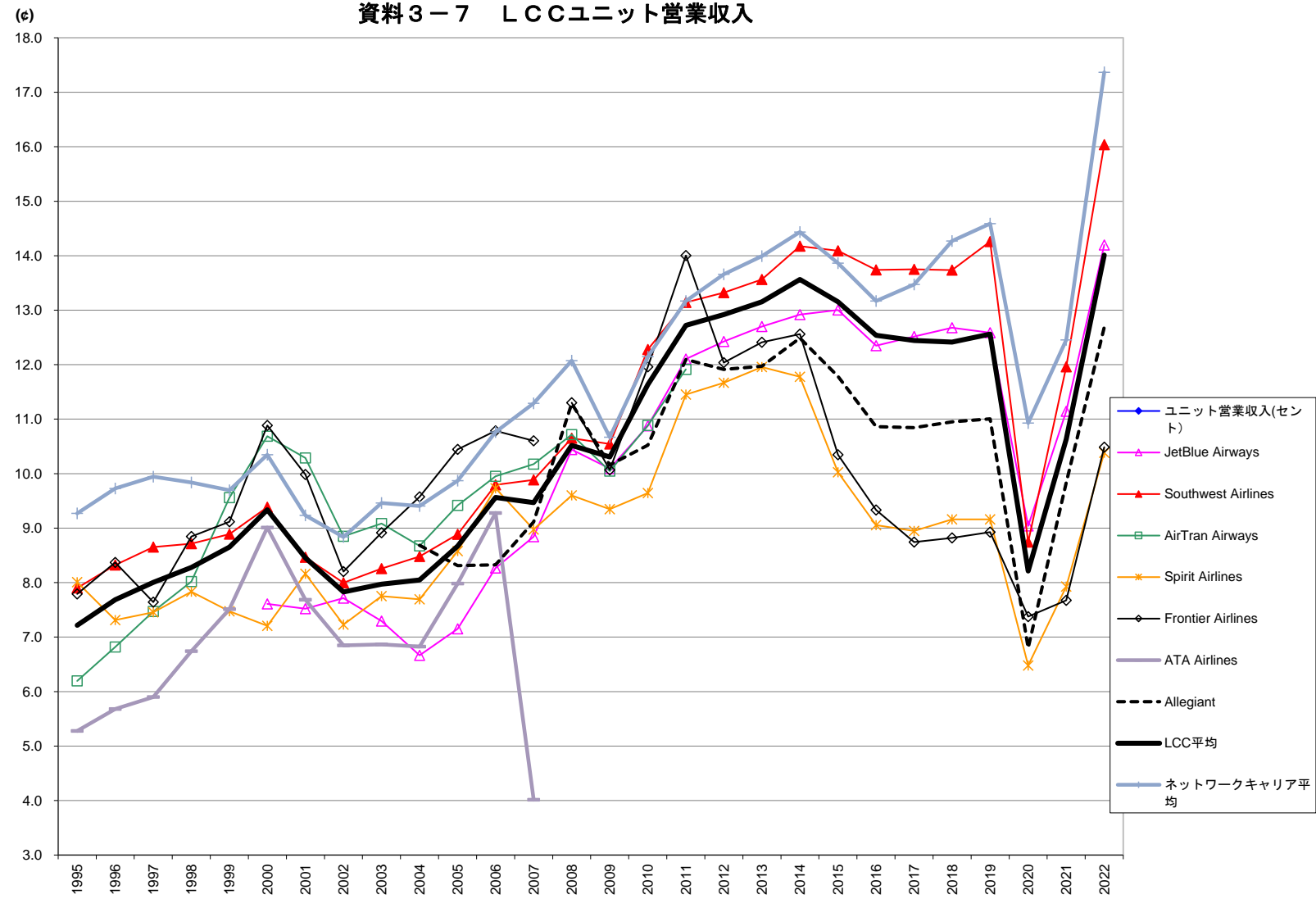
資料3-4 ネットワークキャリアイールド
全市場



資料 3-5 ネットワークキャリアアイルド

市場	1995	1996	1997	1998	1999	2000	2001	2002	2003	2004	2005	2006	2007	2008	2009	2010	2011	2012	2013	2014	2015	2016	2017	2018	2019	2020	2021	2022
乗客収入額(5000)																												
American Airlines	13,334,852	13,644,605	14,294,756	14,695,216	14,465,453	16,381,087	14,100,109	14,439,480	14,331,851	15,021,092	16,613,993	17,861,522	18,100,801	18,233,954	15,036,925	16,760,248	17,947,249	18,743,110	19,593,803	20,344,882	24,061,833	27,933,490	29,238,016	30,661,462	31,464,856	10,130,199	18,827,823	35,282,195
Continental Airlines	4,383,824	4,913,564	5,713,529	6,401,802	6,987,569	8,070,773	7,170,608	6,632,929	6,889,544	7,109,736	7,974,959	9,302,644	10,376,061	10,989,407	8,904,951	10,137,901	11,932,989											
Delta Air Lines	11,400,294	11,999,250	12,795,769	13,212,042	13,231,831	14,150,096	11,875,674	10,784,141	10,439,218	10,909,919	11,420,324	11,735,625	12,845,188	13,845,378	11,275,427	21,440,342	23,698,147	24,778,446	26,062,695	28,225,196	28,334,927	27,497,589	28,444,298	31,088,552	33,103,053	9,803,275	17,155,883	33,011,781
Northwest Airlines	7,777,676	8,611,192	8,745,107	7,534,651	8,616,412	9,580,515	8,267,124	7,791,546	7,703,665	8,458,662	8,878,213	9,051,059	9,328,629	9,525,301	7,029,510													
United Airlines	13,055,174	14,267,769	15,082,474	15,217,378	15,460,047	16,817,797	13,478,558	11,537,293	10,753,431	12,079,567	12,534,575	13,946,619	14,861,784	14,803,392	11,290,904	13,461,375	14,180,145	25,966,772	25,996,937	26,784,777	26,333,049	25,413,978	26,552,537	28,901,536	30,413,796	8,380,688	14,778,303	33,047,275
USAirways	7,746,730	8,456,462	8,888,664	8,887,440	8,883,080	9,741,653	8,538,387	7,156,151	7,056,095	7,249,908	7,561,750	7,825,747	7,944,452	7,984,899	6,568,477	7,486,682	8,373,446	8,855,806	9,525,011	9,969,642	5,011,053							
ネットワークキャリア合計	57,698,550	61,892,842	65,520,499	65,948,529	67,644,492	74,521,921	63,418,460	58,341,550	56,973,804	60,828,884	64,983,814	69,723,216	73,456,915	75,382,331	60,106,194	69,286,548	76,131,975	78,343,935	81,178,447	85,324,497	83,740,863	80,845,057	84,234,852	90,651,550	94,981,704	28,314,162	50,762,010	101,341,251
有償旅客マイル(000,000)																												
American Airlines	102,738	104,596	107,002	108,930	110,214	116,572	106,205	121,719	120,325	130,155	138,368	139,451	138,448	131,755	122,418	125,484	126,492	126,404	128,410	129,340	167,066	199,013	201,353	205,454	212,860	77,067	136,514	191,525
Continental Airlines	35,910	37,588	44,294	51,027	58,028	62,358	58,764	57,292	57,590	63,376	68,367	76,319	81,428	80,496	77,785	79,735	82,127											
Delta Air Lines	85,155	93,929	99,687	102,015	104,780	107,841	97,663	95,312	89,432	98,278	103,740	98,909	103,450	105,697	100,733	168,139	168,289	169,591	172,925	181,195	188,375	191,722	196,882	205,322	217,818	66,344	121,276	181,891
Northwest Airlines	62,629	68,705	72,105	66,760	74,235	79,221	73,253	72,125	68,762	73,403	75,920	72,690	73,023	71,646	62,965													
United Airlines	111,811	116,698	121,424	124,610	125,450	126,933	116,635	109,429	104,394	115,232	114,271	117,471	117,399	110,062	100,476	102,524	99,619	179,398	178,561	178,989	183,625	186,157	193,427	204,905	213,226	62,490	110,750	190,294
USAirways	51,383	54,563	57,952	57,744	59,262	65,953	65,044	59,912	59,067	63,837	64,410	60,919	61,255	60,567	57,885	58,972	60,774	62,430	66,160	66,301	32,395							
ネットワークキャリア合計	449,536	470,979	502,464	511,067	531,970	558,917	517,563	515,790	499,569	544,282	565,076	565,738	575,004	560,222	522,251	534,635	537,301	537,623	546,856	555,825	571,461	576,892	591,663	615,681	643,904	205,901	369,541	563,710
アイルド (セント)																												
American Airlines	12.98	13.05	13.36	13.49	13.12	14.05	13.28	11.86	11.91	11.54	12.01	12.81	13.07	13.84	12.28	13.36	14.19	14.83	15.26	15.73	14.40	14.04	14.52	14.92	14.78	13.14	13.79	18.42
Continental Airlines	12.24	13.07	12.90	12.55	12.04	12.94	12.20	11.58	11.62	11.22	11.66	12.19	12.74	13.65	11.45	12.71	14.53											
Delta Air Lines	13.39	12.77	12.84	12.95	12.63	13.12	12.16	11.31	11.67	11.10	11.01	11.87	12.42	12.42	13.10	11.19	12.75	14.08	14.61	15.07	15.58	15.04	14.34	14.45	15.14	15.20	14.78	14.15
Northwest Airlines	12.42	12.53	12.13	11.29	11.61	12.07	11.29	10.80	11.20	11.52	11.69	12.45	12.77	13.30	11.17													
United Airlines	11.68	12.23	12.42	12.21	12.32	13.09	11.56	10.54	10.30	10.48	10.97	11.87	12.66	13.45	11.24	13.13	14.23	14.47	14.56	14.96	14.34	13.65	13.73	14.10	14.26	13.41	13.34	17.37
USAirways	15.07	15.50	15.34	15.39	14.99	14.76	13.11	11.94	11.95	11.36	11.74	12.85	12.97	13.18	11.35	12.70	13.78	14.18	14.40	15.04	15.47							
ネットワークキャリア平均	12.84	13.00	13.04	12.90	12.72	13.33	12.25	11.31	11.40	11.18	11.50	12.32	12.78	13.46	11.51	12.95	14.17	14.57	14.87	15.35	14.65	14.01	14.24	14.72	14.75	13.75	13.77	17.98

資料3-7 LCCユニット営業収入



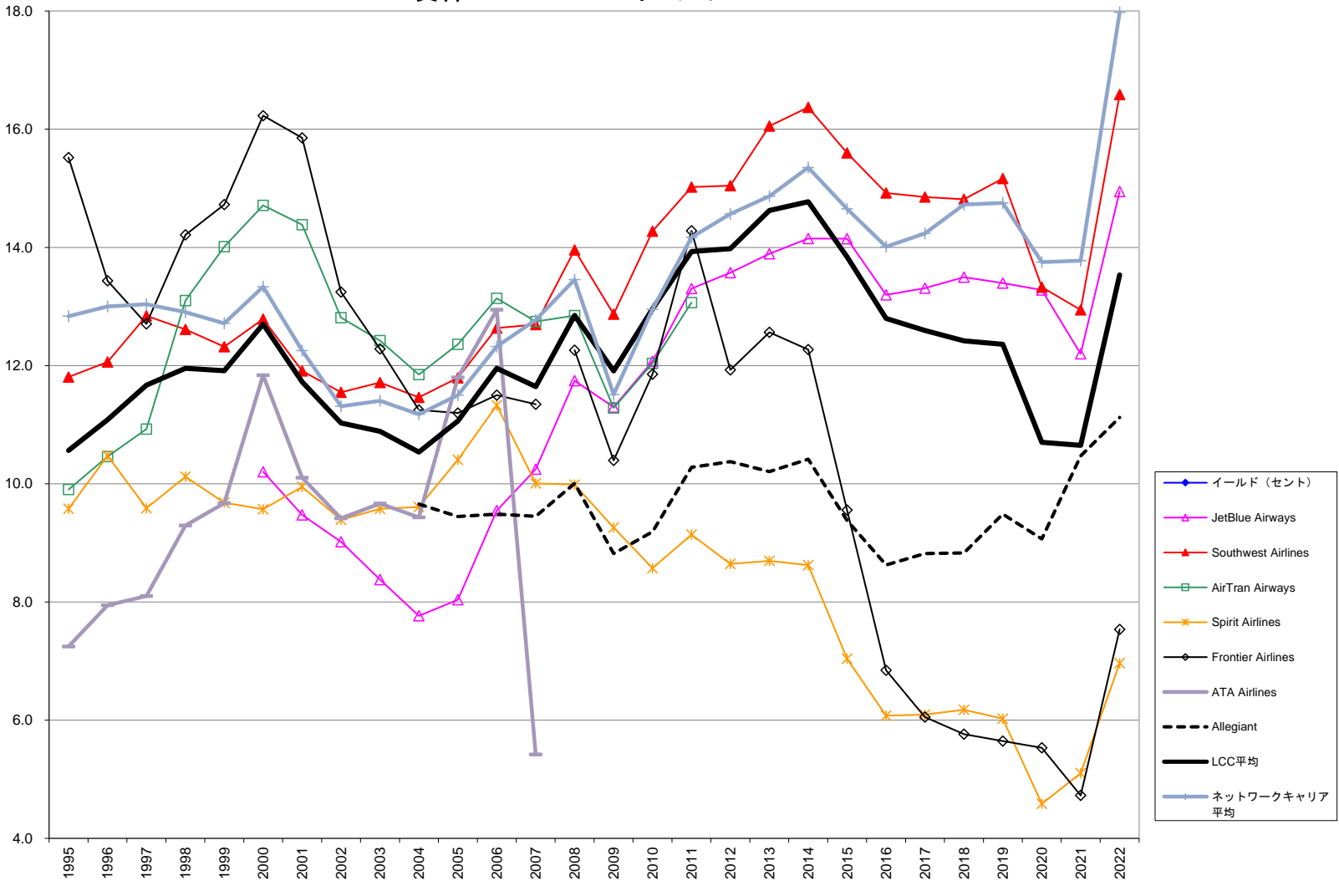
資料 3 - 8 LCC 営業収入額及びユニット営業収入

	1995	1996	1997	1998	1999	2000	2001	2002	2003	2004	2005	2006	2007	2008	2009	2010	2011	2012	2013	2014	2015	2016	2017	2018	2019	2020	2021	2022	
営業収入額(5000)																													
JetBlue Airways						105,000	320,414	635,191	998,351	1,265,972	1,703,181	2,363,258	2,843,155	3,390,181	3,287,412	3,780,816	4,508,899	4,982,014	5,441,828	5,816,877	6,416,127	6,832,433	7,015,326	7,658,451	8,094,008	2,956,562	6,037,351	9,158,184	
Southwest Airlines	2,873,482	3,407,361	3,816,997	4,164,040	4,735,648	5,649,621	5,555,235	5,521,829	5,936,696	6,529,620	7,583,837	9,086,299	9,860,783	11,023,243	10,350,338	12,103,710	13,654,641	17,087,612	17,699,434	18,605,116	19,820,110	20,425,210	21,170,660	21,965,049	22,427,753	9,048,061	15,790,331	23,814,399	
AirTran Airways	46,844	100,208	105,597	369,246	523,468	624,095	665,163	733,370	918,039	1,041,422	1,450,543	1,892,083	2,309,983	2,552,478	2,341,442	2,619,172	2,941,625												
Spirit Airlines	53,612	62,742	81,066	130,563	227,096	311,363	375,193	404,344	450,067	483,266	484,449	540,294	762,556	788,837	698,966	778,905	1,071,187	1,318,388	1,654,385	1,931,581	2,141,463	2,321,957	2,647,666	3,323,035	3,830,536	1,810,022	3,230,775	5,068,447	
Frontier Airlines	55,850	109,511	136,323	192,319	307,487	450,610	446,652	464,616	590,063	787,227	960,340	1,131,705	1,334,364	1,370,900	1,113,397	1,316,949	1,661,914	1,433,466	1,348,551	1,574,869	1,603,153	1,713,577	1,914,740	2,158,858	2,508,349	1,250,006	2,060,272	3,326,028	
ATA Airlines	682,187	716,123	746,167	878,722	1,001,324	1,182,093	1,154,274	1,149,982	1,398,397	1,414,292	1,051,247	752,113	340,813																
Alliant									101,946	132,501	229,858	340,054	483,080	536,465	635,459	745,038	869,236	957,824	1,099,667	1,221,507	1,317,315	1,443,616	1,596,808	1,745,985	926,449	1,692,017	2,301,827		
LCC合計	3,711,974	4,395,945	4,888,171	5,734,890	6,795,022	8,322,782	8,516,931	8,909,331	10,291,613	11,623,746	13,366,098	15,995,610	17,791,708	19,608,720	18,328,020	21,235,011	24,583,304	25,690,715	27,102,022	29,028,111	31,202,360	32,410,491	34,192,008	36,699,201	38,606,632	15,991,100	28,810,746	43,668,885	
ネットワークキャリア合計	65,436,839	69,464,848	74,127,683	74,990,530	77,477,321	84,345,751	72,783,537	67,636,891	70,506,306	78,641,402	88,507,878	96,576,876	101,015,624	106,493,714	88,309,689	99,934,664	109,658,543	113,023,277	116,801,123	122,217,435	119,634,477	116,671,003	121,407,487	130,371,041	136,145,001	49,807,965	84,445,024	144,550,486	
提供座席マイル(000,000)																													
JetBlue Airways					1,380	4,260	8,231	13,689	18,992	23,815	28,581	32,148	32,465	32,563	34,758	37,248	40,095	42,852	45,028	49,347	53,705	56,039	60,409	64,311	32,710	54,167	64,504		
Southwest Airlines	36,373	40,943	44,116	47,782	53,277	60,213	65,623	69,048	71,911	77,006	85,354	92,785	99,767	103,486	98,171	98,558	103,891	128,272	130,503	131,259	140,671	148,658	153,966	159,920	157,297	103,470	132,030	148,495	
AirTran Airways	756	1,469	1,414	4,604	5,475	5,841	6,465	8,286	10,105	12,005	15,401	19,011	22,706	23,821	23,305	24,690	24,690												
Spirit Airlines	669	858	1,088	1,667	3,039	4,321	4,598	5,594	5,905	6,282	5,648	5,553	8,497	8,218	7,478	8,076	9,353	11,299	13,837	16,401	21,364	25,641	29,585	36,270	41,817	27,938	40,753	48,811	
Frontier Airlines	717	1,309	1,810	2,174	3,373	4,140	4,474	5,665	6,618	8,222	9,195	10,493	12,585	12,131	11,057	11,011	11,868	11,909	10,867	12,539	15,496	18,359	21,895	24,444	28,104	16,946	26,851	31,714	
ATA Airlines	12,922	12,606	12,643	13,033	13,325	13,117	15,017	16,790	20,368	20,724	13,168	8,106	8,489	2,018															
Alliant					7	44	142	293	207	501	1,174	1,594	2,761	3,731	4,289	5,281	6,040	6,159	7,297	8,000	8,806	10,365	12,125	13,310	14,581	15,863	13,623	17,204	
LCC合計	51,437	57,184	61,072	69,267	78,534	89,153	100,729	113,821	129,096	144,405	154,175	167,289	187,822	186,418	177,855	182,503	193,208	198,871	206,058	214,033	237,242	258,487	274,796	295,625	307,392	194,686	271,005	311,669	
ネットワークキャリア合計	663,032	677,177	702,888	714,558	743,906	764,620	732,268	706,699	666,834	706,458	711,766	699,172	700,800	686,114	637,361	642,541	649,776	644,010	649,574	663,807	679,761	691,661	706,787	731,933	753,004	344,384	513,541	674,266	
ユニット営業収入(セント)																													
JetBlue Airways					7.61	7.52	7.72	7.29	6.67	7.15	8.27	8.84	7.21	12.43	10.10	10.88	12.11	12.43	12.70	12.92	13.00	12.35	12.52	12.68	12.59	9.04	11.15	14.20	
Southwest Airlines	7.90	8.32	8.65	8.71	8.89	9.38	8.47	8.00	8.26	8.48	8.89	9.79	9.88	10.65	10.54	12.28	13.14	13.32	13.56	14.17	14.09	13.74	13.75	13.74	14.26	8.74	11.96	16.04	
AirTran Airways	6.20	6.82	7.47	8.02	9.56	10.69	10.29	8.85	9.09	8.67	9.42	9.95	10.17	10.72	10.05	10.89	11.91												
Spirit Airlines	8.01	7.31	7.45	7.53	7.47	7.21	8.16	7.23	7.75	7.69	8.58	9.73	8.97	9.60	9.35	9.84	11.45	11.67	11.96	11.79	10.02	9.06	8.95	9.16	9.16	6.48	7.93	10.38	
Frontier Airlines	7.79	8.37	7.64	8.85	9.12	10.89	9.98	8.20	8.52	9.57	10.44	10.79	10.60	11.30	10.07	11.96	14.00	12.04	12.41	12.56	10.35	9.33	8.75	8.82	8.93	7.38	7.67	10.49	
ATA Airlines	5.28	5.68	5.90	6.74	7.51	9.01	7.69	6.85	6.87	6.82	7.98	9.28	4.01																
Alliant										8.69	8.31	8.33	9.11	11.29	10.16	10.52	12.10	11.91	11.97	12.49	11.78	10.86	10.85	10.95	11.01	6.80	9.83	12.69	
LCC平均	7.22	7.69	8.00	8.28	8.65	9.34	8.46	7.83	7.97	8.05	8.67	9.56	9.47	10.52	10.31	11.64	12.72	12.92	13.15	13.56	13.15	12.54	12.44	12.41	12.56	8.21	10.63	14.01	
ネットワークキャリア平均	9.27	9.73	9.94	9.84	9.70	10.35	9.23	8.84	9.46	9.41	9.87	10.76	11.29	12.07	10.67	12.15	13.17	13.66	13.99	14.44	13.87	13.17	13.47	14.27	14.59	10.93	12.45	17.37	

※2012年のユニット営業収入を計算するにあたり、AirTranの営業収入、提供座席マイルについては、DOTの発表データの都合上、統合調整中のSouthwest Airlineへすべて加算。

(c)

資料3-9 LCCイールド

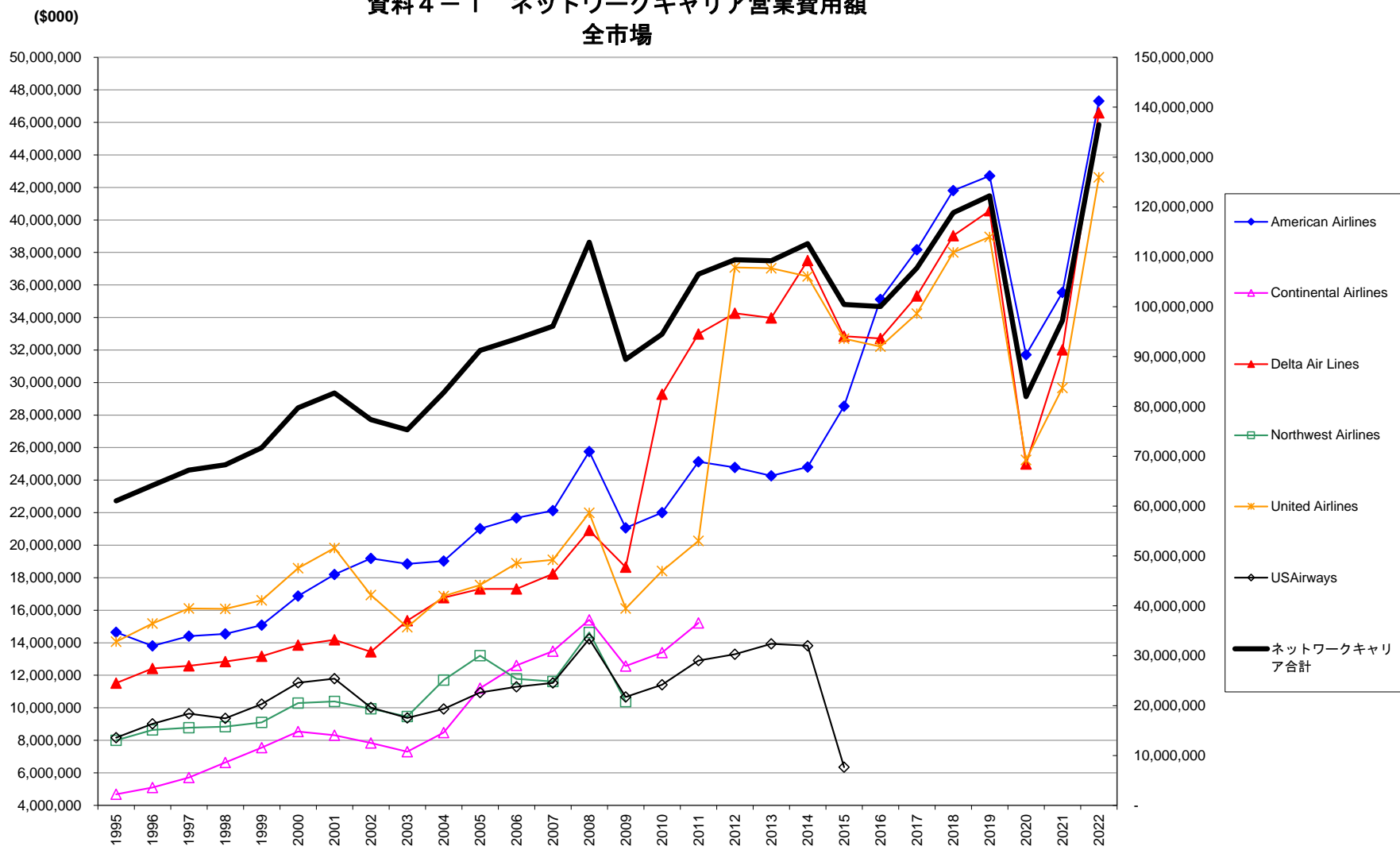


資料3-10 LCCイールド

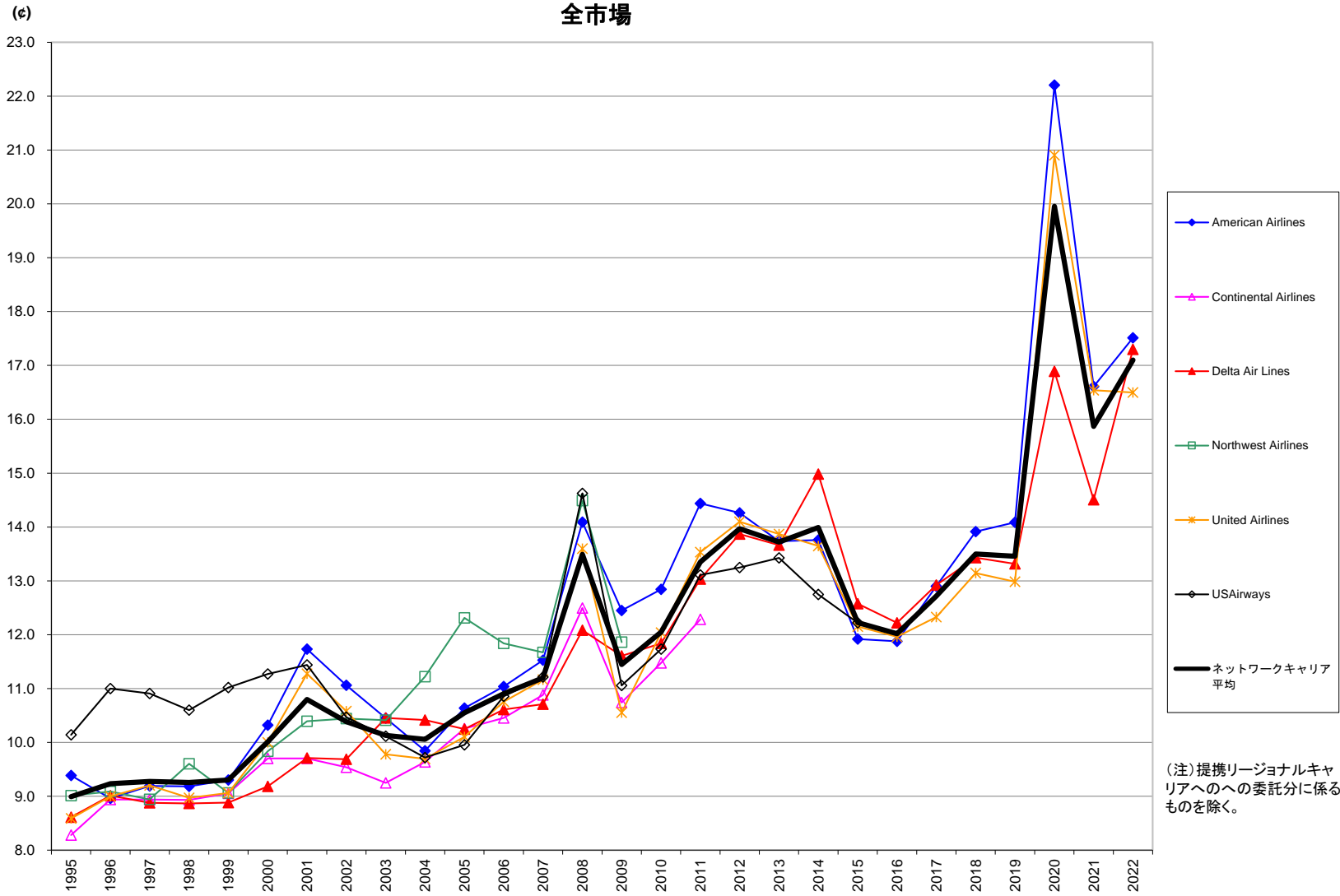
	1995	1996	1997	1998	1999	2000	2001	2002	2003	2004	2005	2006	2007	2008	2009	2010	2011	2012	2013	2014	2015	2016	2017	2018	2019	2020	2021	2022
旅客収入額(5000)																												
JetBlue Airways						102,307	310,530	615,156	965,119	1,220,770	1,622,954	2,225,325	2,635,626	3,064,558	2,933,148	3,415,312	4,085,954	4,557,147	4,980,671	5,353,892	5,906,736	6,028,333	6,289,585	6,858,558	7,183,791	2,471,600	5,024,536	7,858,670
Southwest Airlines	2,774,717	3,288,014	3,660,274	3,984,078	4,529,988	5,426,744	5,318,822	5,255,417	5,626,874	6,135,043	7,117,524	8,565,310	9,193,013	10,278,673	9,596,966	11,152,435	12,604,416	15,491,673	16,767,831	17,703,520	18,346,746	18,635,691	19,183,624	19,764,734	19,924,555	7,227,855	13,405,889	20,547,334
AirTran Airways	43,910	97,650	101,748	344,286	486,487	604,826	648,485	715,612	889,950	1,005,263	1,397,294	1,814,907	2,198,910	2,413,610	2,088,965	2,354,955	2,615,682											
Spirit Airlines	52,563	61,542	78,496	125,165	217,480	294,917	333,658	385,218	438,834	469,574	470,038	516,614	686,124	659,028	549,979	568,121	731,762	831,747	1,043,473	1,221,241	1,267,124	1,311,587	1,499,059	1,889,616	2,123,736	885,616	1,639,231	2,770,176
Frontier Airlines	53,902	105,163	130,649	182,858	293,579	433,544	429,671	445,250	560,641	676,488	815,709	961,399	1,122,298	1,217,898	928,444	1,090,799	1,475,088	1,262,785	1,238,402	1,368,686	1,279,953	1,095,820	1,144,832	1,203,126	1,365,673	632,691	962,509	1,932,884
ATA Airlines	656,971	694,848	727,500	852,669	977,528	1,172,490	1,113,793	1,111,730	1,364,904	86,475	121,307	212,091	294,320	383,494	417,882	499,060	575,806	674,011	725,542	818,365	843,532	892,126	985,425	1,093,732	1,265,467	733,341	1,274,642	1,723,998
Alliant																												
LCC合計	3,582,063	4,247,217	4,698,666	5,489,056	6,505,063	8,034,828	8,154,959	8,528,383	9,846,322	10,964,733	12,574,792	15,028,437	16,463,165	18,017,261	16,515,384	19,080,682	22,088,708	22,817,364	24,755,919	26,465,704	27,644,090	27,963,557	29,102,525	30,809,766	31,863,223	11,951,103	22,306,807	34,833,062
ネットワークキャリア合計	57,698,550	61,892,842	65,520,499	65,948,529	67,644,492	74,521,921	63,418,460	58,341,550	56,973,804	60,828,884	64,983,814	69,723,216	73,456,915	75,382,331	60,106,194	69,286,548	76,131,975	78,343,935	81,178,447	85,324,497	83,740,863	80,845,057	84,234,852	90,651,550	94,981,704	28,314,162	50,762,010	101,341,251
有償旅客マイル(000,000)																												
JetBlue Airways						1,003	3,277	6,820	11,519	15,721	20,187	23,310	25,722	26,090	25,959	28,290	30,710	33,577	35,855	37,838	41,751	45,675	47,249	50,819	53,620	18,610	41,193	52,579
Southwest Airlines	23,601	27,265	28,505	31,588	36,768	42,439	44,664	45,503	48,035	53,524	60,346	67,782	72,410	73,640	74,572	78,135	83,912	102,967	104,461	108,143	117,616	124,900	129,150	133,411	131,360	54,230	103,582	123,866
AirTran Airways	443	933	931	2,628	3,472	4,111	4,509	5,586	7,165	8,485	11,304	13,814	17,252	18,789	18,512	19,564	20,019											
Spirit Airlines	549	588	819	1,237	2,247	3,081	3,354	4,103	4,582	4,888	4,517	4,561	6,856	6,599	5,940	6,627	8,007	9,621	12,000	14,159	17,996	21,583	24,604	30,592	35,245	19,316	32,126	39,779
Frontier Airlines	347	783	1,028	1,287	1,994	2,671	2,710	3,362	4,565	6,014	7,285	8,360	9,893	9,933	8,931	9,200	10,330	10,586	9,858	11,154	13,395	16,009	18,909	20,875	24,191	11,435	20,365	25,644
ATA Airlines	9,064	8,745	8,981	9,175	10,104	9,904	11,023	11,809	14,120	14,536	8,720	5,661	6,142	1,344														
Alliant				4	16	50	23	140	447	895	1,284	2,235	3,115	3,833	4,738	5,432	5,602	6,496	7,108	7,857	8,994	10,342	11,174	12,385	13,340	8,087	12,175	15,499
LCC合計	33,904	38,313	40,264	45,918	54,691	63,259	69,561	77,323	90,433	104,065	113,644	125,724	141,391	140,228	138,651	147,247	158,579	163,248	169,282	179,151	199,751	218,510	231,087	248,082	257,776	111,676	209,440	257,366
ネットワークキャリア合計	449,536	476,079	502,464	511,087	531,970	558,917	517,563	515,790	499,569	544,282	565,076	565,758	575,004	560,222	522,251	534,855	537,301	537,823	546,056	555,825	571,461	576,892	591,663	615,681	643,904	205,901	368,541	563,710
イールド(セント)																												
JetBlue Airways						10.20	9.48	9.02	8.38	7.77	8.04	9.55	10.25	11.75	11.30	12.07	13.31	13.57	13.89	14.15	14.15	13.20	13.31	13.50	13.40	13.28	12.20	14.95
Southwest Airlines	11.81	12.06	12.84	12.61	12.32	12.79	11.91	11.55	11.71	11.46	11.79	12.64	12.70	13.96	12.87	14.27	15.02	15.05	16.05	16.37	15.60	14.92	14.85	14.81	15.17	13.33	12.94	16.59
AirTran Airways	9.90	10.46	10.93	13.10	14.01	14.71	14.38	12.81	12.42	11.85	12.36	13.14	12.75	12.85	11.28	12.04	13.07											
Spirit Airlines	9.58	10.47	9.59	10.12	9.68	9.57	9.95	9.39	9.58	9.61	10.41	11.33	10.01	9.99	9.26	8.57	9.14	8.64	8.70	8.63	7.04	6.08	6.09	6.18	6.03	4.58	5.10	6.96
Frontier Airlines	15.52	13.43	12.71	14.21	14.73	16.23	15.85	13.25	12.28	11.25	11.20	11.50	11.34	12.26	10.40	11.86	14.28	11.93	12.56	12.27	9.56	6.84	6.05	5.76	5.65	5.53	4.73	7.54
ATA Airlines	7.25	7.95	8.10	9.29	9.67	11.84	10.10	9.41	9.67	9.43	11.80	12.94	5.42															
Alliant										9.66	9.44	9.49	9.45	10.01	8.82	9.19	10.28	10.38	10.21	10.42	9.38	8.63	8.82	8.83	9.49	9.07	10.47	11.12
LCC平均	10.57	11.09	11.67	11.95	11.91	12.70	11.72	11.03	10.89	10.54	11.06	11.95	11.64	12.85	11.91	12.96	13.93	13.98	14.62	14.77	13.84	12.80	12.59	12.42	12.36	10.70	10.65	13.53
ネットワークキャリア平均	12.84	13.00	13.04	12.90	12.72	13.33	12.25	11.31	11.40	11.18	11.50	12.32	12.78	13.46	11.51	12.95	14.17	14.57	14.87	15.35	14.65	14.01	14.24	14.72	14.75	13.75	13.77	17.98

※2012年のイールドを計算するにあたり、AirTranの旅客収入、有償旅客マイルについては、DOTの発表データの都合上、統合調整中のSouthwest Airlineへすべて加算。

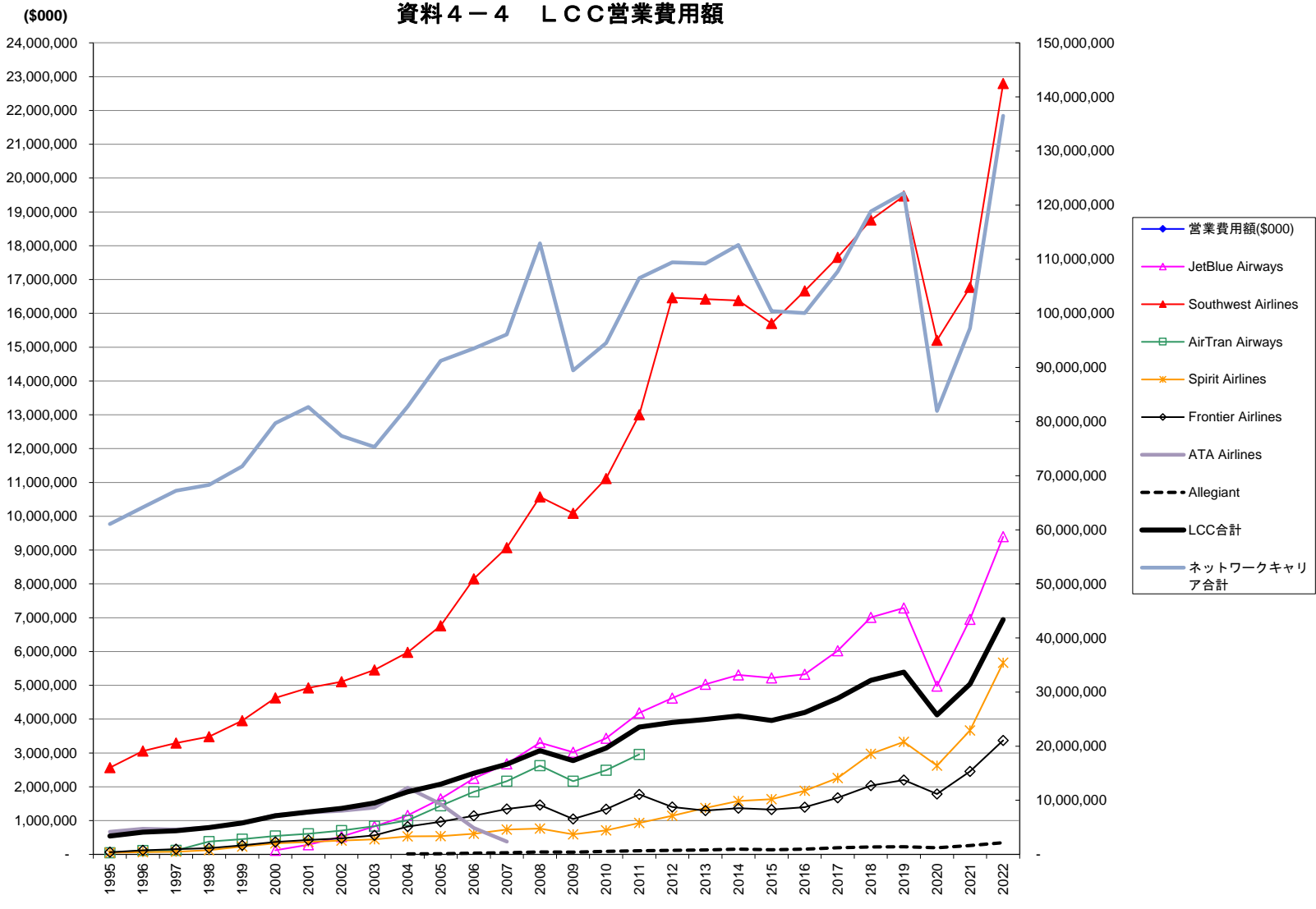
資料4-1 ネットワークキャリア営業費用額
全市場



資料4-2 ネットワークキャリアユニット営業費用
全市場

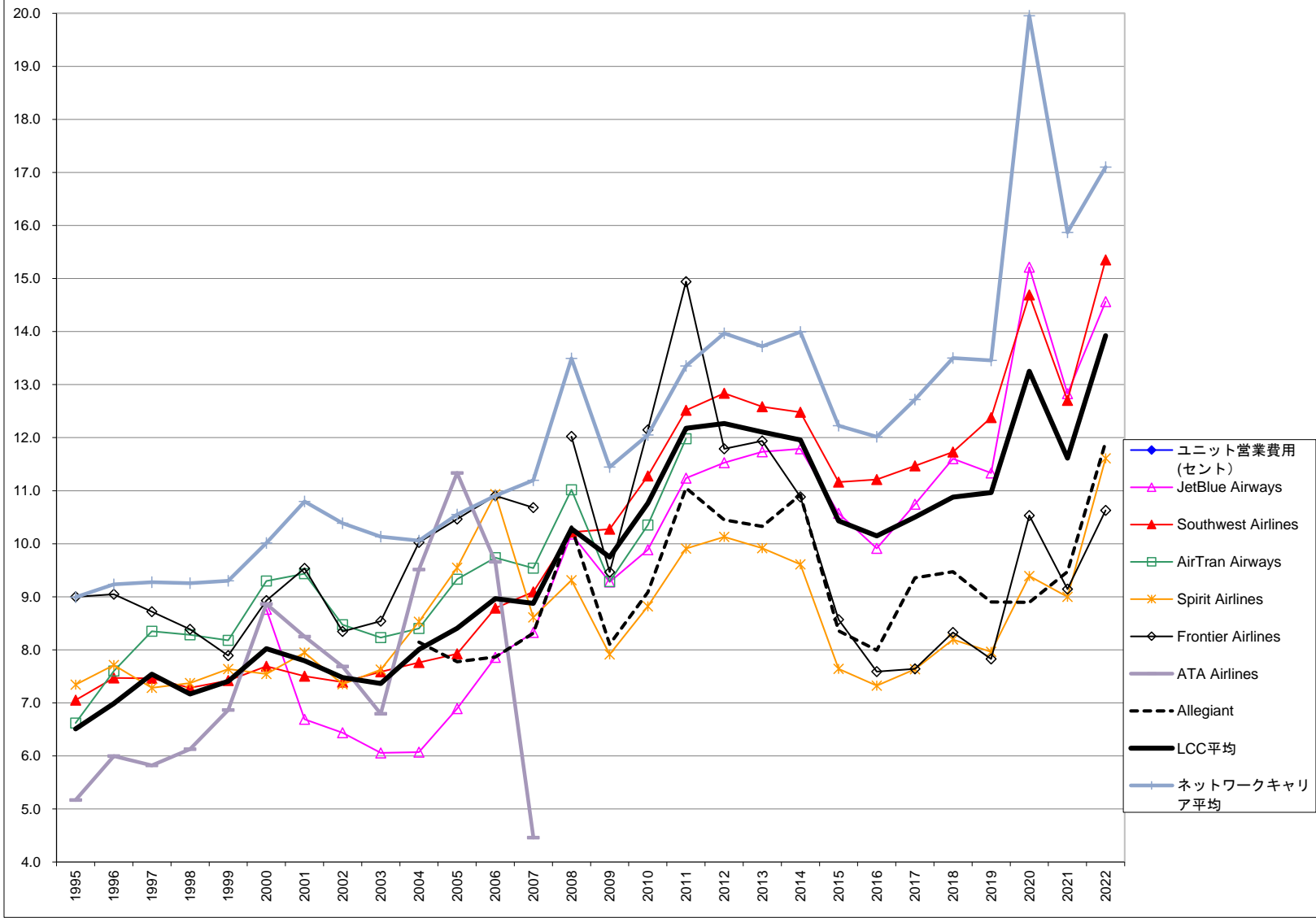


資料4-4 LCC営業費用額



(c)

資料4-5 LCCユニット営業費用

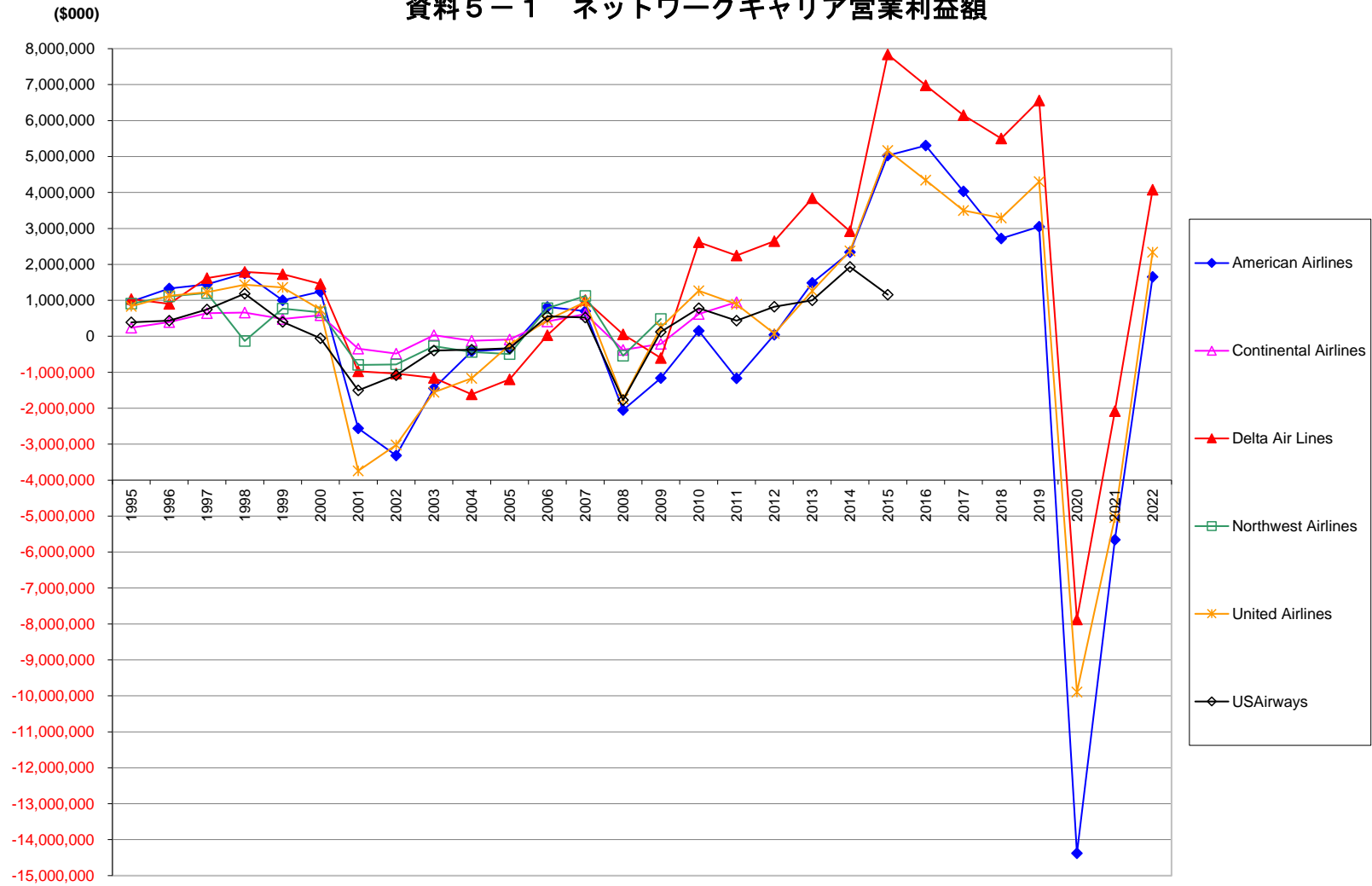


資料4-6 LCC営業費用額及びユニット営業費用

	1995	1996	1997	1998	1999	2000	2001	2002	2003	2004	2005	2006	2007	2008	2009	2010	2011	2012	2013	2014	2015	2016	2017	2018	2019	2020	2021	2022	
営業費用額(5000)																													
JetBlue Airways						120,946	284,924	529,689	829,200	1,152,843	1,641,355	2,246,218	2,676,970	3,305,593	3,021,427	3,436,497	4,194,966	4,622,313	5,027,297	5,308,982	5,217,767	5,324,318	6,021,964	7,008,072	7,289,760	4,975,664	6,949,124	9,394,078	
Southwest Airlines	2,564,934	3,057,633	3,292,675	3,480,321	3,954,117	4,623,119	4,924,056	5,104,269	5,454,620	5,970,039	6,763,757	8,152,040	9,070,574	10,574,044	10,088,296	11,115,876	13,002,568	16,464,390	16,421,183	16,379,823	15,703,642	16,665,125	17,655,802	18,759,381	19,470,560	15,201,954	16,772,587	22,797,556	
AirTran Airways	50,062	111,646	118,018	381,327	447,721	542,944	609,844	702,167	831,721	1,008,579	1,437,156	1,851,222	2,165,823	2,624,488	2,164,432	2,490,982	2,957,938												
Spirit Airlines	49,145	66,163	79,236	122,968	232,144	326,016	365,301	411,267	442,786	535,229	539,297	607,199	731,766	765,180	591,779	712,391	926,804	1,144,394	1,372,095	1,576,317	1,632,341	1,878,296	2,258,864	2,972,121	3,329,487	2,623,065	3,667,335	5,667,364	
Frontier Airlines	64,508	118,400	157,875	182,320	266,141	369,550	426,576	472,712	565,127	824,202	962,350	1,144,178	1,344,190	1,458,286	1,046,494	1,337,368	1,773,389	1,404,075	1,297,125	1,364,674	1,327,738	1,393,252	1,673,085	2,035,969	2,199,892	1,785,024	2,454,882	3,371,411	
ATA Airlines	668,051	755,948	736,121	798,604	915,023	1,162,756	1,238,799	1,290,744	1,384,242	1,971,474	1,492,644	783,918	378,736																
Allegiant											95,600	123,983	217,071	310,218	441,557	427,945	548,666	680,634	762,573	826,249	961,475	866,380	968,981	1,245,431	1,380,975	1,411,870	1,211,543	1,629,727	2,162,291
LCC合計	3,396,700	4,109,790	4,383,925	4,965,440	5,815,146	7,151,332	7,849,499	8,510,847	9,507,694	11,564,466	12,960,542	15,000,946	16,678,277	19,169,149	17,340,373	19,641,780	23,526,319	24,397,745	24,943,949	25,591,272	24,747,868	26,229,972	28,855,145	32,156,517	33,701,569	25,797,250	31,473,654	43,392,700	
ネットワークキャリア合計	61,060,847	64,162,754	67,237,673	68,295,205	71,736,029	79,709,319	82,702,429	77,354,719	75,305,583	82,770,008	91,216,031	93,530,955	96,087,775	112,930,358	89,438,163	94,495,848	106,505,942	109,435,394	109,213,489	112,651,415	100,439,398	100,046,327	107,726,056	118,849,496	122,236,895	81,952,355	97,228,241	136,518,634	
提供座席マイル(000,000)																													
JetBlue Airways						1,380	4,260	8,231	13,689	18,992	23,815	28,581	32,148	32,465	32,563	34,758	37,248	40,095	42,852	45,028	49,347	53,705	56,039	60,409	64,311	32,710	54,167	64,504	
Southwest Airlines	36,373	40,943	44,116	47,782	53,277	60,213	65,623	69,048	71,911	77,006	85,354	92,785	99,767	103,486	98,171	98,558	103,891	128,272	130,503	131,259	140,671	148,658	153,966	159,920	157,297	103,470	132,030	148,495	
AirTran Airways	756	1,469	1,414	4,604	5,475	5,841	6,465	8,286	10,105	12,005	15,401	19,011	22,706	23,821	23,305	24,060	24,689												
Spirit Airlines	669	858	1,088	1,667	3,039	4,321	4,598	5,594	5,805	6,282	5,648	5,553	6,497	8,218	7,478	8,076	9,353	11,299	13,837	16,401	21,364	25,641	29,585	36,270	41,817	27,938	40,753	48,811	
Frontier Airlines	717	1,309	1,810	2,174	3,373	4,140	4,474	5,965	6,618	8,222	9,195	10,493	12,585	12,131	11,057	11,011	11,868	11,909	10,867	12,539	15,496	18,359	21,895	24,444	28,104	16,946	26,851	31,714	
ATA Airlines	12,922	12,606	12,643	13,033	13,325	13,117	15,017	16,790	20,368	20,724	13,168	8,106	8,489	2,018															
Allegiant	0	0	0	7	44	142	293	207	601	1,174	1,594	2,761	3,731	4,280	5,281	6,040	6,159	7,297	8,000	8,806	10,365	12,125	13,310	14,581	15,863	13,623	17,204	18,145	
LCC合計	51,437	57,184	61,072	69,267	78,534	89,153	100,729	113,821	129,096	144,405	154,175	167,289	187,922	186,418	177,855	182,503	193,208	198,871	206,058	214,033	237,242	258,487	274,796	295,625	307,392	194,686	271,005	311,669	
ネットワークキャリア平均	663,932	677,177	702,888	714,558	743,906	764,620	732,268	706,699	666,834	706,458	711,766	699,172	700,800	686,114	637,361	642,541	649,776	644,010	649,574	663,807	679,761	691,661	706,787	731,933	753,004	344,384	513,541	674,266	
ユニット営業費用(セント)																													
JetBlue Airways						8.76	6.69	6.44	6.06	6.07	6.89	7.86	8.33	10.18	9.28	9.89	11.24	11.53	11.73	11.79	10.57	9.91	10.75	11.60	11.34	15.21	12.83	14.56	
Southwest Airlines	7.05	7.47	7.46	7.28	7.42	7.69	7.50	7.39	7.59	7.76	7.92	8.79	9.09	10.22	10.28	12.52	12.84	12.58	12.48	11.16	11.21	11.47	11.73	12.38	14.69	12.70	15.35		
AirTran Airways	6.62	7.60	8.35	8.28	8.18	9.30	9.43	8.47	8.23	8.40	9.33	9.74	9.54	11.02	9.29	10.35	11.98												
Spirit Airlines	7.34	7.71	7.28	7.37	7.64	7.55	7.63	8.53	8.53	9.55	10.93	8.61	9.31	7.91	8.82	9.91	9.82	9.61	7.64	7.33	7.64	8.19	7.96	8.39	9.00	11.61	11.61		
Frontier Airlines	9.00	9.05	8.72	8.39	7.99	8.93	9.53	8.34	8.54	10.02	10.47	10.90	10.68	12.02	9.46	12.15	14.94	11.79	11.94	10.88	8.57	7.59	7.64	8.33	7.83	10.53	9.14	10.63	
ATA Airlines	5.17	6.00	5.82	6.13	6.87	8.86	8.25	7.69	6.80	9.51	11.34	9.66	4.46																
Allegiant										8.14	7.78	7.86	8.31	10.32	8.10	9.08	11.05	10.45	10.33	10.92	8.36	7.99	9.36	9.47	8.90	8.89	9.47	11.92	
LCC平均	6.51	6.99	7.54	7.17	7.40	8.02	7.79	7.48	7.36	8.01	8.41	8.97	8.88	10.28	9.75	10.76	12.18	12.27	12.11	11.96	10.43	10.15	10.50	10.88	10.96	13.25	11.61	13.92	
ネットワークキャリア平均	8.99	9.23	9.28	9.26	9.30	10.01	10.80	10.39	10.13	10.06	10.55	10.90	11.20	13.49	11.45	12.05	13.35	13.97	13.72	13.99	12.23	12.02	12.72	13.50	13.46	19.96	15.87	17.10	

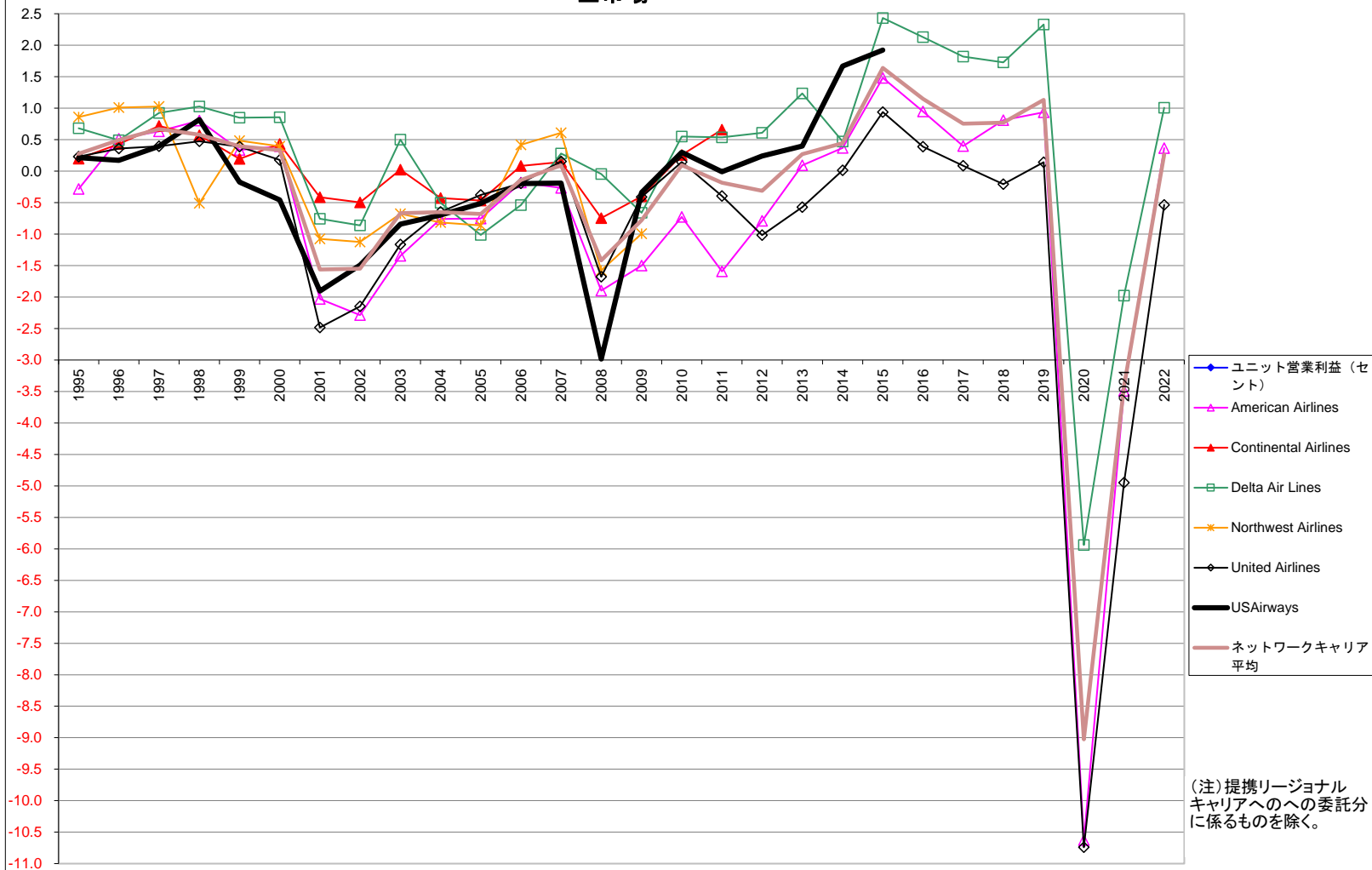
※2012年のユニット営業費用を計算するにあたり、AirTranの営業費用、提供座席マイルについては、DOTの発表データの都合上、統合調整中のSouthwest Airlineへすべて加算。

資料5-1 ネットワークキャリア営業利益額



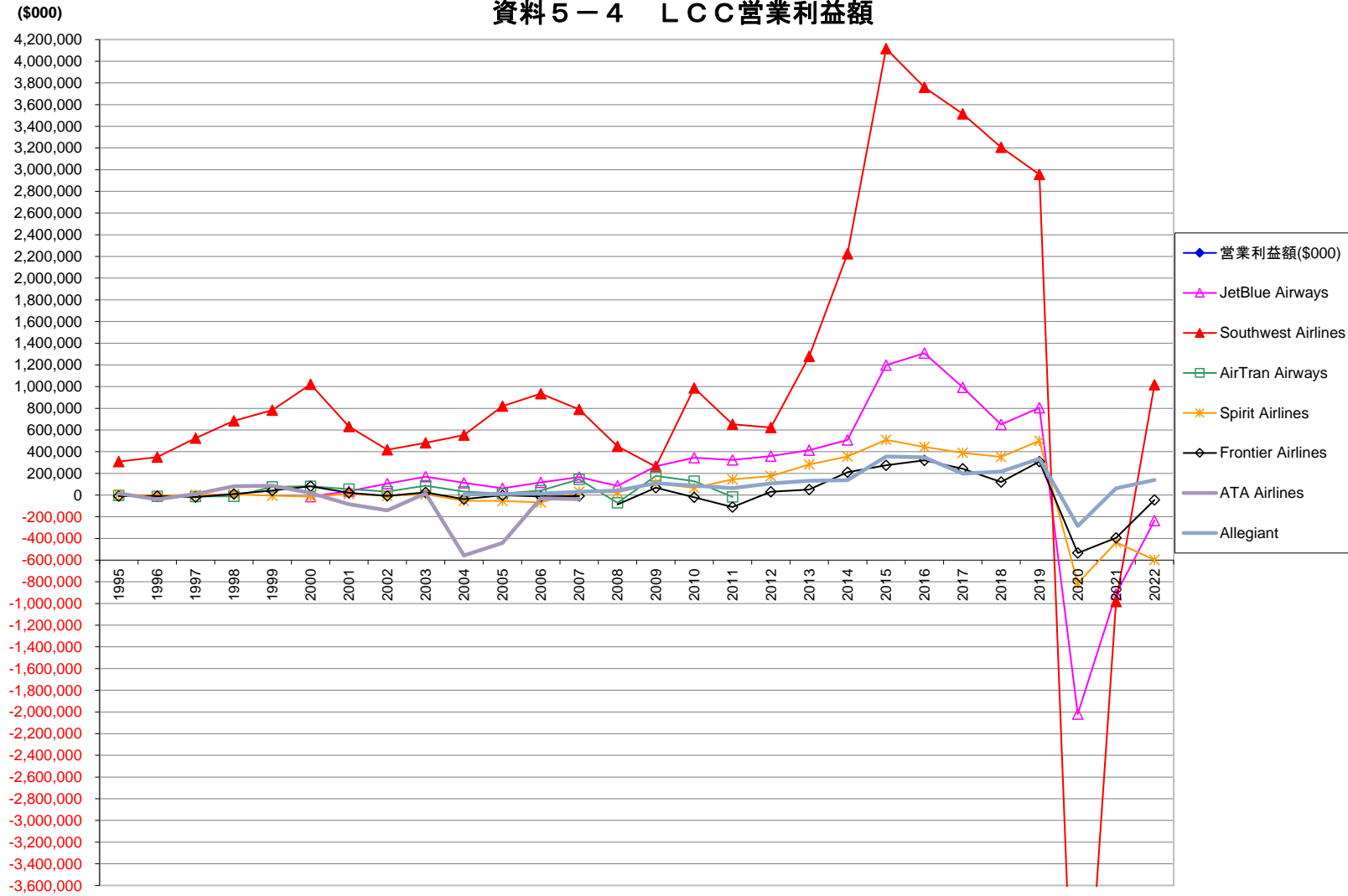
資料5-2 ネットワークキャリアユニット営業利益
全市場

(e)



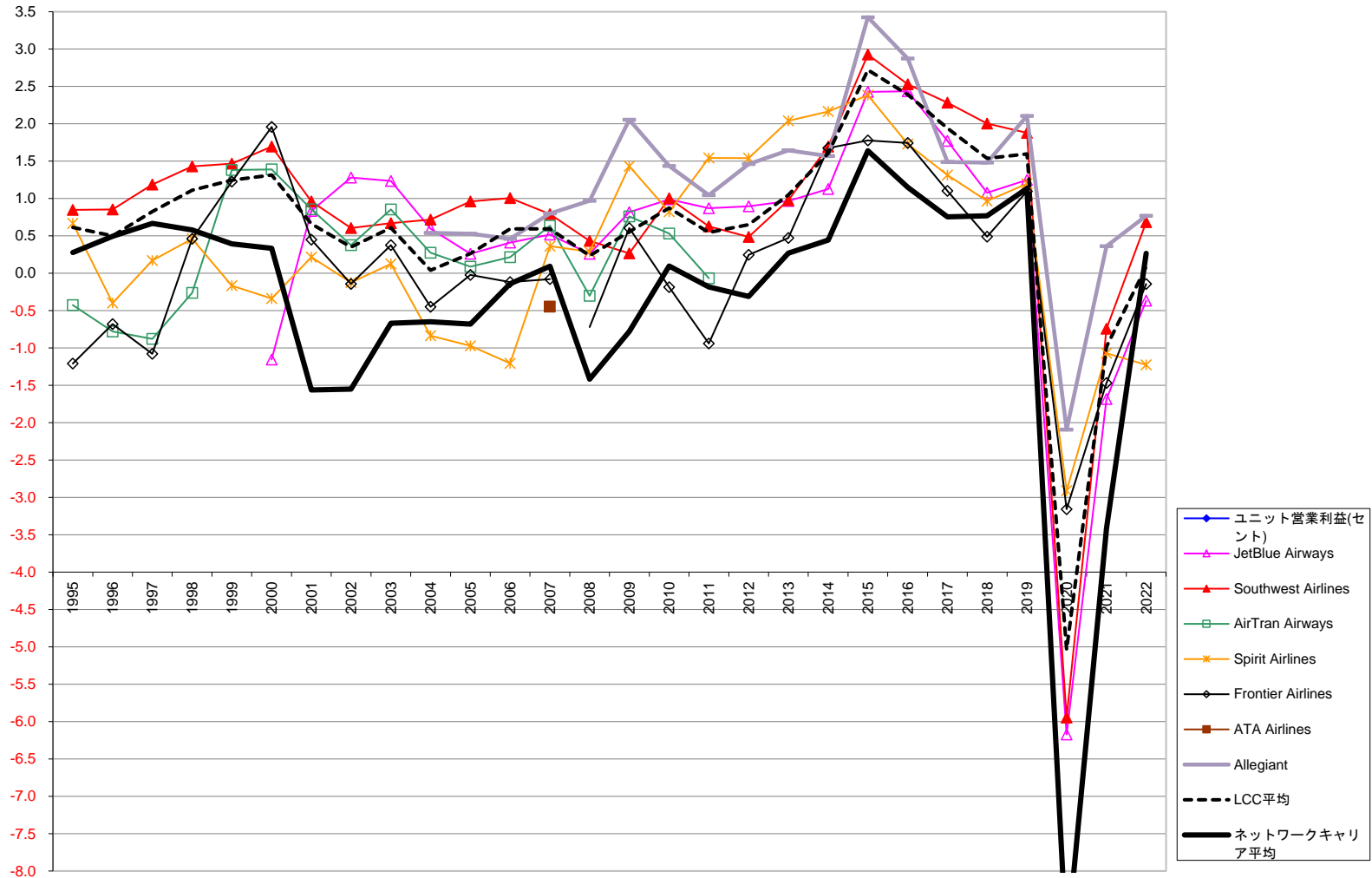
(注) 提携リージョナル
キャリアへのへの委託分
に係るものを除く。

資料5-4 LCC營業利益額



資料5-5 LCCユニット営業利益

(e)



資料5-6 LCC営業利益額及びユニット営業利益

	1995	1996	1997	1998	1999	2000	2001	2002	2003	2004	2005	2006	2007	2008	2009	2010	2011	2012	2013	2014	2015	2016	2017	2018	2019	2020	2021	2022	
営業利益額(3000)																													
JetBlue Airways						-15,046	35,490	105,502	169,152	113,128	61,826	117,039	166,184	84,588	265,985	344,319	323,913	359,700	414,530	507,895	1,198,360	1,308,115	993,362	650,379	804,249	-2,019,103	-911,773	-235,894	
Southwest Airlines	308,548	349,728	524,322	683,719	781,531	1,020,502	631,179	417,560	482,076	553,581	820,080	934,259	790,209	449,199	282,042	987,834	652,073	623,222	1,278,251	2,225,293	4,116,468	3,760,085	3,514,858	3,205,668	2,957,193	-6,153,893	-982,256	1,016,843	
AirTran Airways	-3,218	-11,439	-12,421	-12,081	75,747	81,150	55,320	31,203	86,319	32,844	13,388	40,861	144,160	-72,010	177,010	128,191	-16,313												
Spirit Airlines	4,467	-3,420	1,850	7,695	-5,048	-14,653	9,892	2,992	7,281	-52,462	-54,848	-66,905	30,790	23,657	107,187	66,514	144,383	173,994	282,290	355,264	509,122	443,661	388,802	350,915	501,049	-813,043	-436,560	-598,917	
Frontier Airlines	-8,658	-8,889	-19,552	9,999	41,346	81,060	20,076	-8,096	24,936	-36,975	-2,010	-12,473	-9,827	-87,386	66,903	-20,420	-111,475	29,391	51,427	210,195	275,415	320,325	241,655	119,889	308,458	-535,017	-394,610	-45,383	
ATA Airlines	14,136	-39,825	10,046	80,118	86,300	19,337	-84,525	-140,762	14,155	-57,182	-441,397	-30,905	-37,922																
Alliant									6,346	8,518	12,787	29,836	41,523	108,520	86,793	64,404	106,663	131,575	138,191	355,127	348,333	198,185	215,833	334,115	-285,093	62,290	139,536		
提供座席マイル(000,000)	1995	1996	1997	1998	1999	2000	2001	2002	2003	2004	2005	2006	2007	2008	2009	2010	2011	2012	2013	2014	2015	2016	2017	2018	2019	2020	2021	2022	
JetBlue Airways						1,380	4,260	8,231	13,689	18,992	23,815	28,581	32,148	32,465	32,563	34,758	37,248	40,095	42,852	45,028	49,347	53,705	56,039	60,409	64,311	32,710	54,167	64,504	
Southwest Airlines	36,373	40,943	44,116	47,782	53,277	60,213	65,623	69,048	71,911	77,006	85,354	92,785	99,767	103,486	98,171	98,558	103,891	128,272	130,503	131,259	140,671	148,658	153,966	159,920	157,297	103,470	132,030	148,495	
AirTran Airways	796	1,469	1,414	4,604	5,475	5,841	6,465	8,286	10,105	12,005	15,401	19,011	22,706	23,621	23,305	24,060	24,689												
Spirit Airlines	689	858	1,088	1,667	3,039	4,321	4,598	5,594	5,805	6,282	5,948	5,553	8,497	8,218	7,478	8,076	9,353	11,299	13,837	16,401	21,364	25,641	29,585	36,270	41,817	27,938	40,753	48,811	
Frontier Airlines	717	1,309	1,810	2,174	3,373	4,140	4,474	5,665	6,618	8,222	9,195	10,493	12,585	12,131	11,057	11,011	11,868	11,909	10,867	12,539	15,406	18,359	21,895	24,444	28,104	16,946	26,851	31,714	
ATA Airlines	12,922	12,606	12,643	13,033	13,325	13,117	15,017	16,790	20,368	20,724	13,168	8,106	8,489	2,018															
Alliant				7	44	142	293	207	601	1,174	1,594	2,761	3,731	4,280	5,281	6,040	6,159	7,297	8,000	8,806	10,365	12,125	13,310	14,581	15,863	13,623	17,204	18,145	
LCC合計	51,437	57,184	61,072	69,267	78,534	89,153	100,729	113,821	129,096	144,405	154,175	167,289	187,922	186,418	177,855	182,503	193,208	198,871	206,058	214,033	237,242	258,487	274,796	295,625	307,392	194,686	271,005	311,669	
ネットワークキャリア合計	663,932	677,177	702,888	714,558	743,906	764,620	732,268	706,699	666,634	706,458	711,766	699,172	700,800	686,114	637,361	642,541	649,776	644,010	649,574	663,807	679,761	691,661	706,787	731,933	753,004	344,384	513,541	674,266	
ユニット営業利益(セント)																													
JetBlue Airways						-1.16	0.83	1.28	1.24	0.60	0.26	0.41	0.52	0.26	0.82	0.99	0.87	0.90	0.97	1.13	2.43	2.44	1.77	1.08	1.25	-6.17	-1.68	-0.37	
Southwest Airlines	0.85	0.85	1.19	1.43	1.47	1.69	0.96	0.60	0.67	0.72	0.96	1.01	0.79	0.43	0.27	1.00	0.63	0.49	0.98	1.70	2.93	2.53	2.28	2.00	1.88	-5.95	-0.74	0.68	
AirTran Airways	-0.43	-0.78	-0.88	-0.26	1.38	1.39	0.86	0.38	0.85	0.27	0.09	0.21	0.63	-0.30	0.76	0.53	-0.07												
Spirit Airlines	0.67	-0.40	0.17	0.46	-0.17	-0.34	0.22	-0.12	0.13	-0.84	-0.97	-1.20	0.36	0.29	1.43	0.82	1.54	1.54	2.04	2.17	2.38	1.73	1.31	0.97	1.20	-2.91	-1.07	-1.23	
Frontier Airlines	-1.21	-0.68	-1.08	0.46	1.23	1.96	0.45	-0.14	0.38	-0.45	-0.02	-0.12	-0.08	-0.72	0.61	-0.19	-0.94	0.25	0.47	1.68	1.78	1.74	1.10	0.49	1.10	-3.16	-1.47	-0.14	
ATA Airlines	0.11	-0.32	0.08	0.61	0.65	0.15	-0.56	-0.84	0.07	-2.69	-3.35	-3.38	-4.45																
Alliant									0.54	0.53	0.46	0.80	0.97	2.05	1.44	1.05	1.46	1.64	1.57	3.43	2.87	1.49	1.48	2.11	-2.09	0.36	0.77		
LCC平均	0.61	0.50	0.83	1.11	1.25	1.31	0.66	0.35	0.61	0.04	0.26	0.59	0.59	0.24	0.56	0.87	0.65	0.65	1.05	1.61	2.72	2.39	1.94	1.54	1.60	-5.04	-0.98	0.09	
ネットワークキャリア平均	0.28	0.49	0.67	0.58	0.39	0.33	-1.56	-1.55	-0.67	-0.65	-0.68	-0.68	-0.14	0.09	-1.42	-0.78	0.10	-0.18	-0.31	0.27	0.44	1.64	1.15	0.75	0.77	1.13	-9.03	-3.42	0.26

※2012年のユニット営業利益を計算するにあたり、AirTranの営業利益、提供座席マイルについては、DOTの発表データの都合上、統合調整中のSouthwest Airlineへすべて可算。