

2024-25



JTTRI

Japan Transport and Tourism Research Institute

Japan Transport and Tourism Research Institute

一般財団法人 運輸総合研究所

Transport and Tourism in the Future Will Certainly Be More Interesting

JTTRI conducts comprehensive research and surveys
on transport and tourism and develops policy recommendations
for the future.





Tokaido Shinkansen (bullet train)



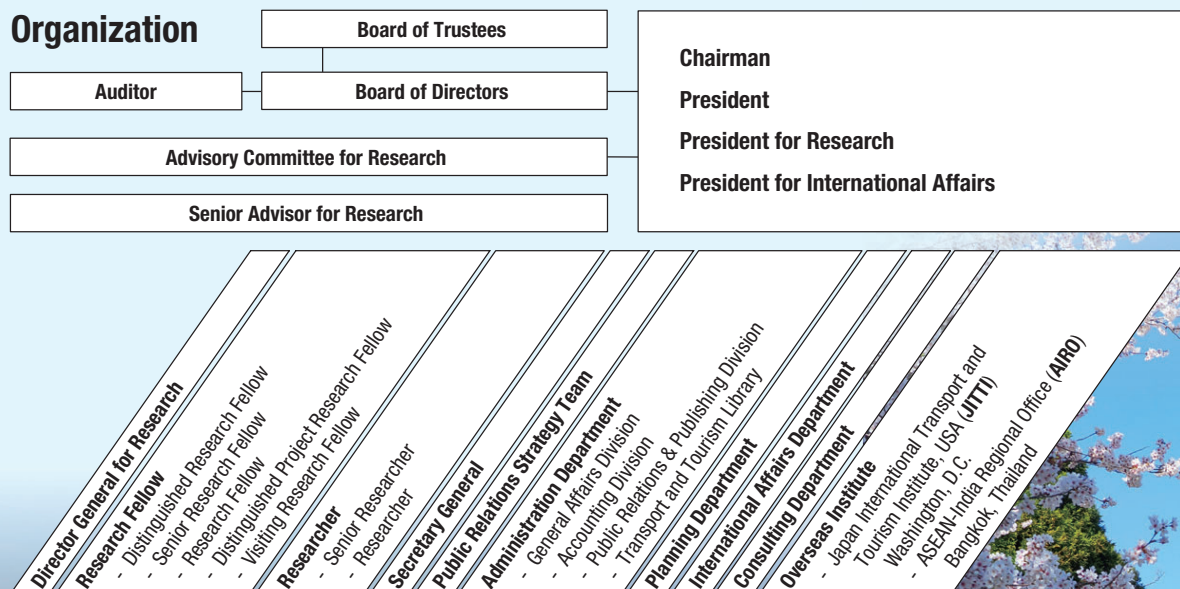
Introduction

The Japan Transport and Tourism Research Institute (JTTRI) is a think tank established in 1968 under the initiative of the former Ministry of Transport (now the Ministry of Land, Infrastructure, Transport and Tourism) with the support of the Japanese government, business organizations, and academic institutions, and it has been engaged in various research activities and policy recommendations in the fields of transportation and tourism. The institute is committed to producing research results and policy recommendations that contribute to resolving issues, and providing useful and usable solutions worldwide.

The JTTRI collaborates with its headquarters in Tokyo and overseas institutes—the Japan International Transport and Tourism Institute (JITTI), Washington, D.C., USA and the ASEAN-India Regional Office (AIRO), Bangkok, Thailand—to conduct broad-based and strategic activities in the Indo-Pacific region and Europe, from North America to Southeast Asia and South Asia.

JTTRI is supported by the Nippon Foundation.

Organization



Container ship operated by Ocean Network Express (ONE)



Message from the Chairman

July 2024

Overcoming the challenges caused by the COVID-19 pandemic for over three years, the economic and social activities in Japan are gradually returning to normalcy. The year 2024 will be critical for controlling deflation, as a virtuous cycle is expected wherein higher corporate earnings will encourage forward-looking spending, including pay rises which will offset price hikes and capital investments, thereby increasing personal consumption.

Meanwhile, continued instability and uncertainties in international security are predicted, considering tensions between the US and China, Russia's invasion of Ukraine, and the Israel-Palestine conflict. The world is now entering a new era of intertwined division and cooperation. The importance of multi-partnerships among nations that share universal values such as freedom, human rights, democracy, and the rule of law are becoming even more apparent as the harsh realities of a chaotic world are emerging.

Furthermore, the changes in social and individual values and behaviors caused by COVID-19 and the exacerbating decline in the labor force have highlighted the need to address business innovation in the transportation and tourism industries, digital transformation, accelerating decarbonization, and Japan's 2024 problem in the transport sector (a new overtime cap for drivers of vehicles took effect in fiscal 2024).

These issues must be addressed through medium- to long-term perspectives, using international knowledge and seeing through global trends.

In this light, we strive to deepen interaction and cooperation with everyone and to contribute to the realization of sustainable and vibrant transportation and tourism, through research, surveys, policy recommendations, seminars, symposiums, consultations, and other activities.

Our activities are carried out in cooperation with JITTI in Washington, D.C., USA and AIRO in Bangkok, Thailand (established in April 2021), in a comprehensive and strategic manner. In conducting these activities, we recognize the role of transportation and tourism in the realization of a "Free and Open Indo-Pacific," and we plan to pay close attention to trends in North America, Southeast Asia and South Asia, as well as in Europe.

We will continue our international activities by assessing the post-COVID-19 economic and social conditions of various countries and regions and strive to conduct research, surveys, seminars, and symposiums aimed at strengthening collaboration with relevant countries and regions in the following (1) enhancement and expansion of international human exchange in a wide range of fields, including tourism, culture, and academia, and (2) development and operation of high-quality transportation infrastructure, and human resource development in Southeast and South Asia. Additionally, we also plan to make the most effective use of the "Sustainable Development Fund Program," "Global Fund Program," and "Maritime and Ocean Development Fund Program," all of which are supported by the Nippon Foundation, to ensure that our activities overall are interconnected and most effectively implemented.

All members of our institute are committed to making your best efforts. We are grateful for their continued guidance and encouragement.



SHUKURI Masafumi
Chairman, Japan Transport and
Tourism Research Institute (JTTRI)

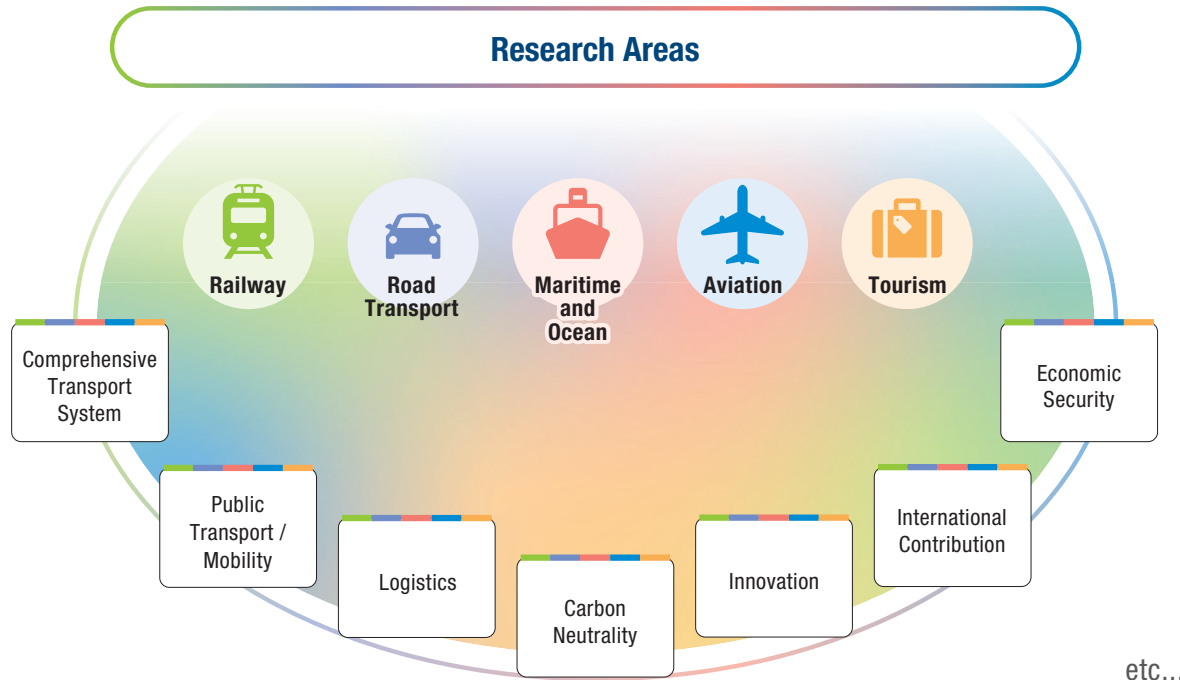


Tokyo International Airport (Haneda Airport)

Rurikoji Temple, Five-Storeyed Pagoda
(Yamaguchi City)

Activity Details

Research and Policy Recommendations



Recent Focus of Major Research Topics

Carbon Neutrality

We focus on mid- to long-term strategies for achieving carbon neutrality, especially facilitating the transition to alternative fuels in the transport sector. Research results on approaches to and challenges for decarbonization in aviation and maritime transport have contributed to discussions at the International Civil Aviation Organization (ICAO) and the International Maritime Organization (IMO).

<Related Link: Research on CO2 Emissions Reductions in the Maritime Sector>
<https://www.jttri.or.jp/research/port/2020theme05.html>



Public Transport / Mobility

We conduct research and surveys on concrete measures, transport industry legislations, etc., aimed at fundamentally and comprehensively reforming the business structure and strengthening the infrastructure of the local transport industry, which supports the sustainable development of the area. In September 2023, we published our policy recommendations, which have been used in discussions in the “Local Public Transportation Re-Design Realization Council” established by the government.

<Related Link: Research on Strengthening the Business Foundation and Business Restructuring in the Regional Public Transportation Industry>
https://www.jttri.or.jp/research/transportation/public-transport_portal.html



Aviation

We are engaged in research and studies on policy trends in the aviation sector in Europe, the U.S., and Japan, driving new technologies such as drones and Advanced Air Mobility (AAM), and in the functional expansion and enhancement of airports. The results of the “Metropolitan Area Airport Enhancement Research,” which was conducted to expand the capacity of Narita International Airport and formulated a concept of a new third runway and 500,000 departures and arrivals per year, have been adopted as a plan for the government and Narita International Airport Corporation.

<Related Link: The Current State and Future Outlook of the American Aviation Industry - Recovery from the Pandemic, Future Challenges, and Prospects>
https://www.jttri.or.jp/topics/kenkyu_report/2024/0329.html



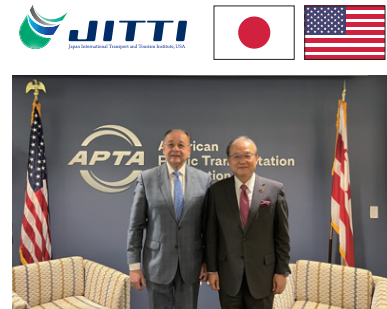
Promotion of International Activities

Based on a global perspective, JTTRI as the headquarters, JITTI, and AIRO work together to conduct research, surveys, and seminars based on the needs of other countries, while promoting high-level exchanges and collaboration with governments and research institutes of related countries.

Japan International Transport and Tourism Institute, USA (JITTI)

JITTI was established in Washington, D.C., in 1991 to enhance the collection of information on transportation and tourism in the United States and around the world. In addition to researching the latest trends in the U.S. and introducing Japanese policies, JITTI works on strengthening co-operation, information sharing, and mutual understanding between the public and private sectors in the U.S. and Japan by hosting symposiums with U.S. and Japanese government officials and experts. Currently, the institute has 10 staff members, including the President.

Collaboration with the CEO of APTA, Paul Skoutelas



ASEAN-India Regional Office (AIRO)

AIRO was established in Bangkok, Thailand, in April 2021 to conduct research and surveys, collect information, organize seminars and symposiums, disseminate meaningful information to government, academia, and industry, and build cooperative relationships in transportation and tourism in the Southeast Asian region and South Asia. Currently, the 9 staff members, including the President, contribute to the fields of transportation and tourism considering local needs.

The 1st Japan-Thailand Tourism Working Group (Co-hosted by the Ministry of Tourism and Sports of Thailand and AIRO)



Collaboration with Domestic and International Research Institutions

We collaborate with domestic and international research institutions such as Korea Transportation Institute (KOTI) and Institute of Comprehensive Transportation of National Development and Reform Commission of People's Republic of China (ICT), as well as present research and disseminate information at conferences such as the Eastern Asia Society for Transportation Studies (EASTS) and the International Transport Forum (ITF). Since 2019, the JTTRI Special Award has been presented at EASTS International Conferences to outstanding papers published in the field of public transportation and mobility activities. The JTTRI Best Paper Award was first presented at the Air Transport Research Society (ATRS) World Conference in 2023 on the theme of sustainability, etc.



Overseas

Korea Transport Institute (KOTI) *
 Korea Maritime Institute (KMI) *
 Korea University Maritime Law Centre (KUMLC) *
 Institute of Comprehensive Transportation of National Development and Reform Commission of People's Republic of China (ICT)
 Institute for Tourism Development Research Vietnam (ITDR) *
 Gati Shakti Vishwavidyalaya (GSV) *
 (Former National Rail & Transportation Institute (NRTI))
 Johns Hopkins University SAIS
 The Edwin O. Reischauer Center for East Asian Studies *
 American Public Transportation Association (APTA)
 Eastern Asia Society for Transportation Studies (EASTS)
 World Conference on Transport Research Society (WCTRS)
 Air Transport Research Society (ATRS)
 International Transport Forum (ITF)
 The International Association of Public Transport (UITP)

(* Institutions that have signed MOUs with JTTRI)

The 15th EASTS Conference in Malaysia
 (September 2023)



MOU signing ceremony
 with KMI, KUMLC, and JMC
 (March 2024)



Domestic

Graduate School of Public Policy, The University of Tokyo (TTPU) *
 Japan Research Institute for Road and Street *
 Waterfront Vitalization and Environment Research Foundation (WAVE) *
 World Tourism Organization (UNWTO) Regional Support Office for Asia and the Pacific *

Japan Maritime Center (JMC) *
 Japan Society of Civil Engineers (JSCE)
 The Japan Society of Transportation Economics
 Association for Planning and Transportation Studies
 Aviation Policy Research Association

(* Institutions that have signed MOUs with JTTRI)

Symposiums, Seminars, etc.

JTTRI holds symposiums to discuss with experts on research results and policy recommendations, colloquiums, and research conferences to report and present research results. In addition, JTTRI regularly holds transportation policy seminars featuring lectures by guest speakers, and JTTRI global seminars in which overseas experts and parties directly address and discuss the issues at hand. Furthermore, international symposiums and seminars are held in the U.S. and different parts of Asia, inviting government officials, academics, and businesses from domestic and international spheres as needed to disseminate information and promote exchanges.

<Recently held symposiums and seminars>

Public Transport Symposium

Japan's Public Transportation Strategy in 2050

- June 28th, 2023, 2:00- 5:00 PM (JST)
- Tokyo *Hybrid Event



Civil Aviation Symposium 2023

Achieving Aviation Sustainability: Challenges and Necessary Cooperation



- October 5th, 2023, 3:00- 6:15 PM (EST)
- Ronald Reagan Building and International Trade Center, Washington, D.C., USA *Hybrid Event



(Collaboration and exchange with the U.S. Department of Transportation, Department of State, and Department of Energy)

Transport Decarbonization Seminar

The Key to Decarbonization Is Hydrogen: Toward Decarbonizing the Transportation Sector

- March 7th, 2024, 2:00- 5:00 PM (JST)
- Tokyo *Hybrid Event



50th Anniversary of Establishment of Diplomatic Relations between Japan and Vietnam



JTTRI-AIRO Opening Commemorative Symposium Overtourism at Major Destinations and Development of Satellites ~ Vietnam and Japan working towards Sustainable Tourism ~

- October 23rd, 2023, 3:00- 6:15 PM (ICT)
- Melia Hotel & Resort Hanoi *Hybrid Event



(Co-hosted with the Vietnam National Authority of Tourism (VNAT) and the Institute for Tourism Development Research (ITDR))

Consulting Business (Contracted Research)

We are commissioned to conduct surveys for policy development and planning in various fields such as public transport, mobility, high-speed railways (Shinkansen), urban and intercity railways, aviation, logistics, tourism, etc., by national and local governments, independent administrative agencies, private companies, and others.

In particular, in the field of transport planning, we contribute to society by conducting research and surveys that meet practical needs, utilizing our accumulated knowledge and network of academic experts. Specifically, we have conducted (1) Feasibility studies, demand forecasts, and cost-benefit analysis, for new urban railroads in Tokyo, Osaka, etc., (2) Project evaluation of railroads and, (3) Basic studies on planning for new or additional runways at international hub airports.

Publication of Journal and Books

Journal “Transport Policy Studies’ Review”

The Transport Policy Studies’ Review, launched in 1998, is based on the JTTRI founding philosophy of “bonding between academic research and practical needs” in the fields of transport and tourism. All papers are published under fair peer review from multiple perspectives and in-depth deliberation by an editorial committee comprising a diverse panel of academics and experts.



<https://www.jstage.jst.go.jp/browse/tpsr/-char/en>



Published Books

We publish and sell books on transportation, such as “Railways in Figures” and “Annual Report on Urban and Regional Transport.”

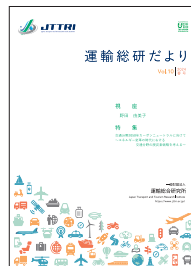


“JTTRI Quarterly Magazine”

Since December 2021, the magazine has been published four times a year to promote our activities and research findings in an easy-to-understand manner. This magazine is also available on our website.



<https://www.jttri.or.jp/journal/dayori.html>



<https://www.jttri.or.jp/publish/>

Transport and Tourism Library

The Transport and Tourism Library has a collection of both domestic and foreign books and materials related to transport and tourism. As of March 2024, it held approximately 34,000 books and 17,000 journals. These books, journals, and materials are used widely for research and investigation. They are available for reading and lending to relevant government agencies, academic experts, and supporting members, and are also accessible to the general public.

Library Hours

Morning: 10:00 AM - 12:00 PM (Lunch Break 12:00 PM - 1:00 PM)
Afternoon: 1:00 PM - 5:30 PM
* Please enter by 11:30 AM for the morning session and by 5:00 PM for the afternoon session.

Closed on the following days

- Weekends and national holidays
- Last day of the month (The preceding day in case the last day is a holiday)
- Year-end and New Year holidays: December 27 – January 7
- Establishment anniversary: October 1
- 3 days at the end of the fiscal year

Online search facility

Books, magazines, and journals held in the Transport and Tourism Library can be searched online.



Transport and Tourism Library

3-18-19 Toranomon (2nd Floor), Minato-ku, Tokyo, 105-0001, Japan
TEL +81-03-5470-8413 FAX +81-03-5470-8411 E-mail libroom@jttri.or.jp

<https://www.jttri.or.jp/about/outline/inforlib/>



Supporting Members

Individuals, groups, and corporations who agree with the aims and objectives of our activities are invited to become Supporting Members of JTTRI.

Primary Membership Benefits

- Members receive a copy of the Institute’s periodicals such as the journal, “Railways in Figures,” and “Annual Report on Urban and Regional Transport.”
- Recordings of symposiums, seminars, etc., hosted by JTTRI are distributed in advance to members.
- Members can borrow books from the Transport and Tourism Library and use the work-space in the library.
- Members can request lectures by our researchers.

Membership fee:
¥120,000 per annum

<https://www.jttri.or.jp/sanjiyo/>

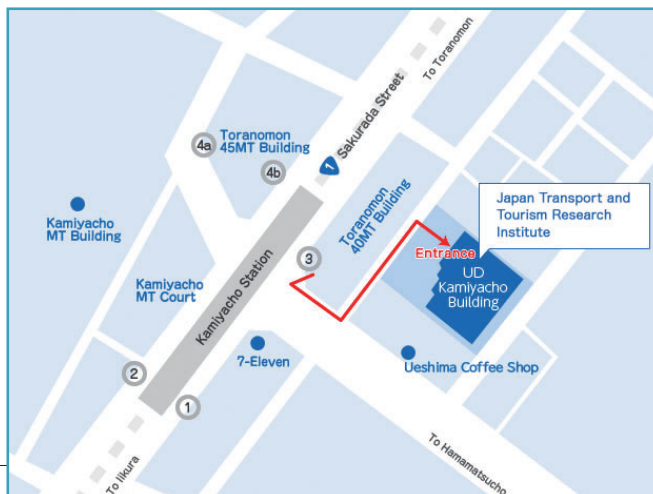




Japan Transport and Tourism Research Institute

3-18-19 Toranomon, Minato-ku, Tokyo, 105-0001, Japan
TEL +81-3-5470-8400 FAX +81-3-5470-8401

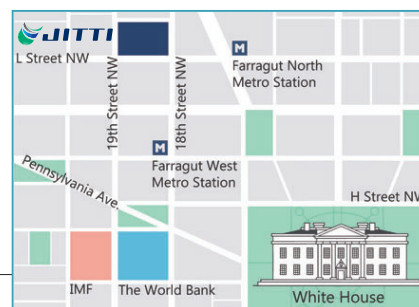
URL : <https://www.jttri.or.jp/english/>



Japan International Transport and Tourism Institute, USA

1819 L Street NW, Suite 1000, Washington, D.C. 20036, USA
TEL +1-(202)833-9763 FAX +1-(202)833-9769

URL : <https://www.jittiusa.org/>



ASEAN-India Regional Office

Serm-Mit Tower Unit 1704, 159/27 Sukhumvit 21 Road,
Khlong Toei Nuea, Wattana, Bangkok 10110, Thailand
TEL +66-(0)2-258-6928

URL : <https://www.jttri-airo.org/>



Please check the above website for the latest information on our activities and seminars. We also distribute an e-newsletter issued bi-monthly and our official X (formerly Twitter) account is updated regularly. Please subscribe and follow us.



e-Newsletter

https://krs.bz/jterc/m/profile_new



X @jttri_official

https://x.com/JTTRI_official