



**JTTRI**  
Japan Transport and Tourism Research Institute

Supported by  
日本財団  
THE NIPPON  
FOUNDATION

# Japan Transport and Tourism Research Institute

<https://www.jttri.or.jp/english/>

*Transport and tourism in the future will certainly be more interesting*

*JTTRI conducts comprehensive surveys and research on transport and tourism and makes proposals towards the future.*



## About JTTRI



The Japan Transport and Tourism Research Institute (JTTRI) was established in 1968 with the support of the Japanese government, industry, and academic sectors, and has been engaged in various research activities in the fields of transportation and tourism. We are committed to producing research results and policy proposals that committed to making a useful and usable contribution to the resolution of issues.

We work together with our headquarters in Tokyo and our overseas offices, the Japan International Transport and Tourism Institute, USA (JITTI) and the ASEAN-India Regional Office (AIRO) to conduct broad-based and strategic activities with a view to the Indo-Pacific region, from North America to Southeast Asia and South Asia.

## Research Activities

We conduct research activities on a wide variety of topics including mobility/public transportation, high-speed rail/urban rail/TOD, aviation/airports, ocean/maritime/ports, logistics, tourism, security/safety, and the environment in Japan, the U.S., ASEAN, and other countries. Recently, we have also been engaged in research on new themes, such as focused research on post-COVID society and the realization of a decarbonized society.

### Recent Key Research Topics

JTTRI has recently been pursuing research on the following topics:

#### ○ Reduction of CO<sub>2</sub> Emissions in the Maritime and Aviation Sectors

In order to achieve carbon neutrality in the maritime sector by 2050, JTTRI is conducting research on the regulation of carbon intensity of marine fuels, which is under discussion in the IMO. We are also researching the long-term feasibility of GHG emission reductions in the aviation sector.



#### ○ Japan's Public Transportation Strategy in 2050

JTTRI is conducting research on the optimal setup for public transportation services in the year 2050 by taking account of how Japanese society is changing and what sort of social system would be ideal in the future.



#### ○ Measures to Strengthen Infrastructure and Business Innovation in the Local Transportation Industry

JTTRI is studying local transportation issues with the aim of proposing a new legal framework that would create new local transportation service sector as such is difficult under the current legal framework, as well as further promote DX and other innovations conducive to business development.



#### ○ Measures to Strengthen Infrastructure and Business Innovation in the Local Tourism Industry

JTTRI is studying local tourism industry issues to prepare a proposal on optimal allocation of tourism resources to revitalize local economies, including facilitating entry/exit of players, and measures for enhancing tourism industry efficiency with high value-added tourism services.

## Japan International Transport and Tourism Institute, USA



In 1991, we began our activities in the U.S. and established the JITTI in 1993. Since then, the Institute has been conducting research activities, holding symposiums and seminars, and transmitting information in the field of transportation and tourism in North America, with a focus on the United States, as well as promoting cooperation and exchange with the U.S. government and research institutions.

## Symposiums and Seminars

We regularly hold events such as symposiums on our research activities, transportation policy colloquiums where our researchers present their results, and transportation policy seminars inviting researchers from universities and other institutions or transportation operators. We also hold international symposiums and seminars frequently, inviting government officials, experts, and business operators from Japan and abroad, and making efforts to transmit and exchange information not only in Japan but also in the U.S. and other parts of Asia.



## Cooperation with Other Research Institutions

We collaborate and exchange research with domestic and international research institutions, as well as present research and disseminate information at domestic and international conferences such as EASTS (Eastern Asia Society for Transportation Studies) and ITF (International Transport Forum). Since 2019, the JTTRI Special Award has been given at EASTS to recognize outstanding papers in the field of public transportation and mobility activities.

### ● Overseas

- Korea Transport Institute (KOTI)
- Institute of Comprehensive Transportation of National Development and Reform Commission of People's Republic of China (ICT)
- National Rail & Transportation Institute (NRTI)
- American Public Transportation Association (APTA)
- Eastern Asia Society for Transportation Studies (EASTS)
- World Conference on Transport Research Society (WCTRS)
- The International Association of Public Transport (UITP)
- International Transport Forum (ITF)
- Air Transport Research Society (ATRS)
- The Edwin O. Reischauer Center for East Asian Studies

### ● Domestic

- Graduate School of Public Policy, The University of Tokyo (TTPU)
- Japan Research Institute for Road and Street
- Waterfront Vitalization and Environment Research Foundation (WAVE)
- World Tourism Organization (UNWTO) Regional Support Office for Asia and the Pacific
- Japan Society of Civil Engineers (JSCE)
- The Japan Society of Transportation Economics
- Association for Planning and Transportation Studies
- Aviation Policy Research Association



Eastern Asia Society for Transportation Studies (EASTS)



The Edwin O. Reischauer Center for East Asian Studies

## Consulting Business (Contracted Research)

We are commissioned by the national government, independent administrative agencies, and local governments to conduct studies to address policy issues in various fields, including mobility and public transportation, Shinkansen (high-speed rail), intercity and urban railroads, aviation and airports, logistics, and tourism.



## ASEAN-India Regional Office (AIRO)



In April 2021, the ASEAN-India Regional Office was opened in Bangkok, Thailand. In order to strengthen ties between Japan and Southeast and South Asia in the fields of transportation and tourism, the office will conduct research surveys, gather information, hold symposiums, and engage in other activities closely based on the needs of the region.



Founding

October 1, 1968

## Executives



**SHUKURI Masafumi**  
Chairman



**SATO Yoshinobu**  
President



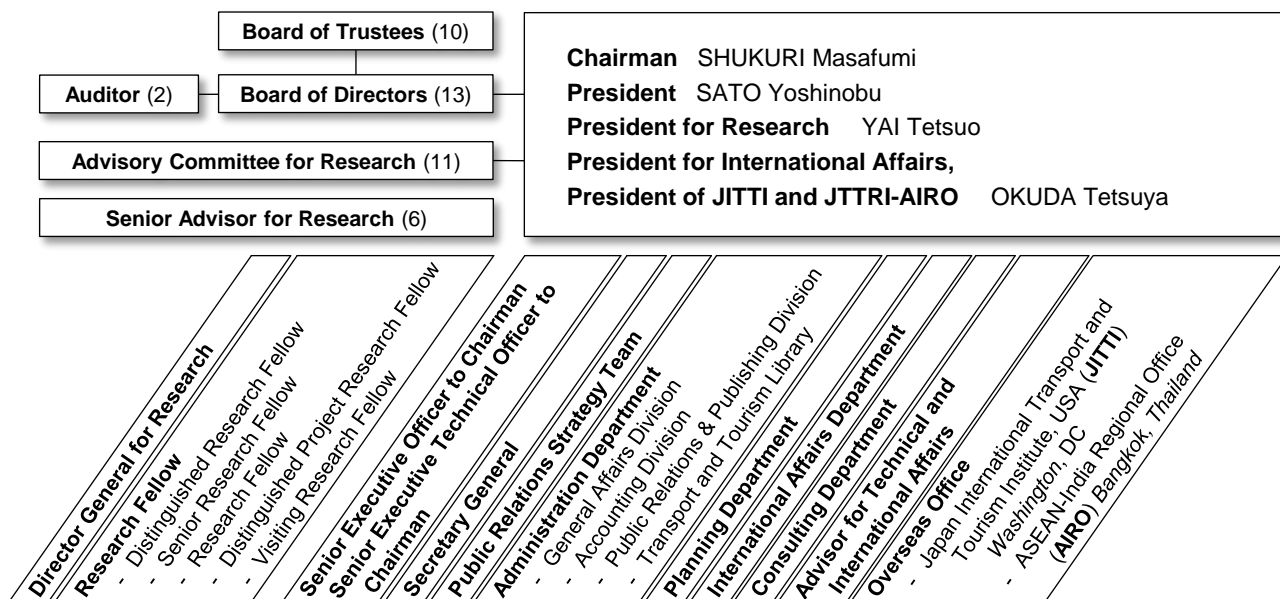
**YAI Tetsuo**  
President for Research



**OKUDA Tetsuya**  
President for International Affairs  
President, JITTI and AIRO

## Organization

As of Jun. 26, 2023



### Japan Transport and Tourism Research Institute

3-18-19 Toranomon, Minato-ku, Tokyo, 105-0001, Japan  
TEL+81-3-5470-8400 FAX+81-3-5470-8401 URL: <https://www.jttri.or.jp/english/>



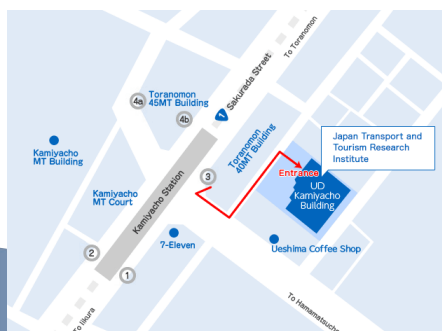
### Japan International Transport and Tourism Institute, USA

1819 L Street NW, Suite 1000, Washington, D.C. 20036  
URL: <https://www.jittiua.org/>

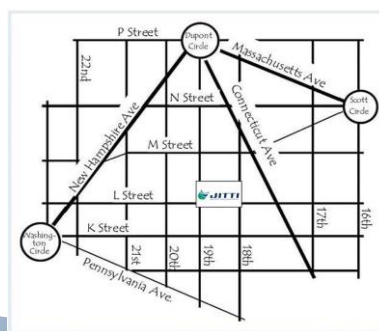


### ASEAN-India Regional Office, JTTRI

Serm-Mit Tower Unit 1704, 159/27 Sukhumvit 21 Road, Khlong Toei Nuea, Wattana, Bangkok 10110, Thailand URL: <http://www.jttri-airo.org/>



Tokyo



Washington D.C.



Bangkok