



About JTTRI

運輸総合研究所について



The Japan Transport and Tourism Research Institute (JTTRI) was established in 1968 with the support of the Japanese government, industry, and academic sectors, and has been engaged in various research activities in the fields of transportation and tourism. We are committed to producing research results and policy proposals that committed to making a "useful" and "usable" contribution to the resolution of issues.

We work together with our headquarters in Tokyo and our overseas offices, the Japan International Transport and Tourism Institute, USA (JITTI) and the ASEAN-India Regional Office (AIRO), to conduct broad-based and strategic activities with a view to the Indo-Pacific region, from North America to Southeast Asia and South Asia.

Research Activities

We conduct research activities on a wide variety of topics including mobility/public transportation, high-speed rail/urban rail/TOD, aviation/airports, ocean/maritime/ports, logistics, tourism, security/safety, and the environment in Japan, the U.S., ASEAN, and other countries. Recently, we have also been engaged in research on new themes, such as focused research on post-corona and realization of a decarbonized society.



The 50th Symposium (Dec 1, 2021)

Cooperation with Other Research Institutions

We collaborate and exchange research with domestic and international research institutions, as well as present research and disseminate information at domestic and international conferences such as EASTS (Eastern Asia Society for Transportation Studies) and ITF (International Transport Forum). Since 2019, the JTTRI Special Award has been given at EASTS to recognize outstanding papers in the field of public transportation and mobility activities.



Awarding the JTTRI Special Award at the 14th EASTS International Virtual Conference (Sep 12~14, 2021)



ITF and WBCSD hosted "The Innovative Mobility Landscape: The Case of Mobility as a Service" Webinar for Japan (Oct. 15, 2021)

Information Transmission and Provision

Journal "Transport Policy Studies' Review"

The Journal of Transportation Policy Studies is published once a year to facilitate a wide range of discussions by linking academic research and practical demands on transportation and tourism policies.

URL:

<https://www.jstage.jst.go.jp/browse/tpsrl-char/en/>



Japan International Transport and Tourism Institute, USA

(JITTI) ワシントン国際問題研究所

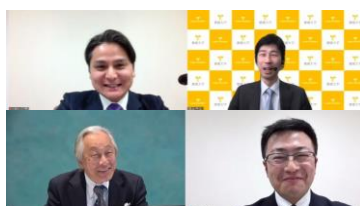


In 1991, we began our activities in the U.S. and established the JITTI in 1993. Since then, the Institute has been conducting research activities, holding symposiums and seminars, and transmitting information in the field of transportation and tourism in North America, with a focus on the United States, as well as promoting cooperation and exchange with the U.S. government and research institutions.

《Results in FY2021 : Symposiums and Seminars held 5 times, Washington Report published 30 times》



JTTRI / JNTO 2019 International Exchange and Tourism Seminar (Oct 8, 2019 at Washington DC, U.S.)



Current Status and Future Prospects of the U.S. Aviation Industry / COVID-19 and the Aviation Industries in Japan, U.S. and Europe Colloquium Aviation and Airport The 14th Transport Policy Colloquium -Washington Report IX- (Mar 04, 2021)



APTA/JTTRI Virtual Commuter Rail Round Table "Initiatives for the Recovery from the COVID-19 Pandemic and Strategies to ensure the Resilience by Commuter/Regional Rail companies in the U.S. and Japan" (Dec 09, 2021)

Symposiums and Seminars ≪Results in FY2021: 31 times (incl. hold by JTTRI and AIRO)≫

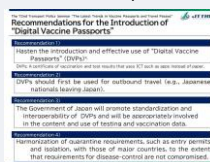
We regularly hold events such as symposiums on our research activities, transportation policy colloquiums where our researchers present their results, and transportation policy seminars inviting researchers from universities and other institutions or transportation operators. We also hold international symposiums and seminars frequently, inviting government officials, experts, and business operators from Japan and abroad, and making efforts to transmit and exchange information not only in Japan but also in the U.S. and other parts of Asia.



Symposium on Medium- and Long-Term Challenges and COVID-19 for Tokyo Area Railways
~Improvement of Attractiveness of Railways considering Population and Demand Trends~
(Jul 5, 2021)

Policy recommendation on the introduction of a "Digital Vaccine Passport"

On Jun 25, 2021, the 72nd Transportation Policy Seminar "The Latest on Vaccine Passport and Travel Pass Trends" was held and experts shared their views. Based on the content of this discussion, on Jul 12 of the same year, the Company made recommendations for the introduction of a "Digital Vaccine Passport".



Seminar on LCA for IMO and other international maritime stakeholders

On February 24, 2022, JTTRI International Webinar "Life Cycle Assessment of New Maritime Fuels" was held based on the research study on Life Cycle Assessment (LCA) of marine fuels. The event was attended by many participants, including IMO officials and domestic and international shipping industry representatives, and provided recommendations and other information for guidelines to be discussed at the IMO.



● Overseas

- Korea Transport Institute(KOTI)
- Institute of Comprehensive Transportation of National Development and Reform Commission of People's Republic of China (ICT)
- Eastern Asia Society for Transportation Studies (EASTS)
- World Conference on Transport Research Society(WCTRS)
- National Rail & Transportation Institute (NRTI)
- American Public Transportation Association(APTA)
- The International Association of Public Transport (UITP)

● Domestic

- Graduate School of Public Policy, The University of Tokyo (TTPU)
- Japan Research Institute for Road and Street
- Waterfront Vitalization and Environment Research Foundation(WAVE)
- World Tourism Organization (UNWTO) Regional Support Office for Asia and the Pacific
- Japan Society of Civil Engineers(JSCE)
- The Japan Society of Transportation Economics
- Association for Planning and Transportation Studies
- Aviation Policy Research Association

Consulting Business (Contracted Research)

We are commissioned by the national government, independent administrative agencies, and local governments to conduct studies to address policy issues in various fields, including mobility and public transportation, Shinkansen (high-speed rail), intercity and urban railroads, aviation and airports, logistics, and tourism.

Transmission of the latest information and topics

We conduct researches on the current situation, policy trends, and industrial conditions in the transportation and tourism sectors in Japan, the U.S., Europe, Asia, etc. We also analyze the information we obtain and present it in the "Washington Institute of International Affairs Report", "ASEAN India Regional Office Report", "Domestic Research Report", and "Overseas Latest Situation and Topics", and publish on our website.

○Paper Magazine "JTTRI Newsletter"

We publish the "JTTRI Newsletter" four times a year to inform our activities and achievements in a more friendly and easy-to-understand format.

○Publishing

We publish and sell books that summarize the results of our research, such as the JTTRI Report, as well as various data that are useful to those involved in transportation.



○Website, E-newsletter

The latest information on our activities is posted on our website and distributed through our twice-monthly e-newsletter.

JTTRI website

URL : <https://www.jttri.or.jp/english/>



QR for submitting E-newsletter

ASEAN-India Regional Office(AIRO)

アセアン・インド地域事務所

In April 2021, the ASEAN-India Regional Office was opened in Bangkok, Thailand. In order to strengthen ties between Japan and Southeast and South Asia in the fields of transportation and tourism, the office will conduct research surveys, gather information, hold symposiums, and engage in other activities closely based on the needs of the region.

≪Results in FY2021: Symposiums and Seminars 5 times, AIRO Report published 7 times≫



ASEAN-Japan Seminar on "Utilization of Mobile Phone Big-Data (MBD) for Transport Planning" in Hanoi
(Jan 16,2019)



The Current Status of Tourism in Thailand in the COVID-19 Pandemic and Suggestions for the Revival of Inbound Tourism in Japan
~Breaking the National Isolationism under the COVID-19 and Reopening the Country~
The 144th Transport Policy Colloquium Bangkok Report
~Startup Series Part 1~
(Oct 15,2021)



Seminar for Promotion of Cold Chain Logistics Standards in Malaysia
Organizer: Ministry of Land,Infrastructure, Transport and Tourism (MLIT),Ministry of Transport Malaysia (MOT), Japan Transport and Tourism Research Institute (JTTRI) cooperation:Japan Transport and Tourism Research Institute ASEAN-India Regional Office (JTTRI-AIRO)
(Feb 02, 2022)

Founding

October 1, 1968

Executive



SHUKURI Masafumi
Chairman



SATO Yosinobu
President

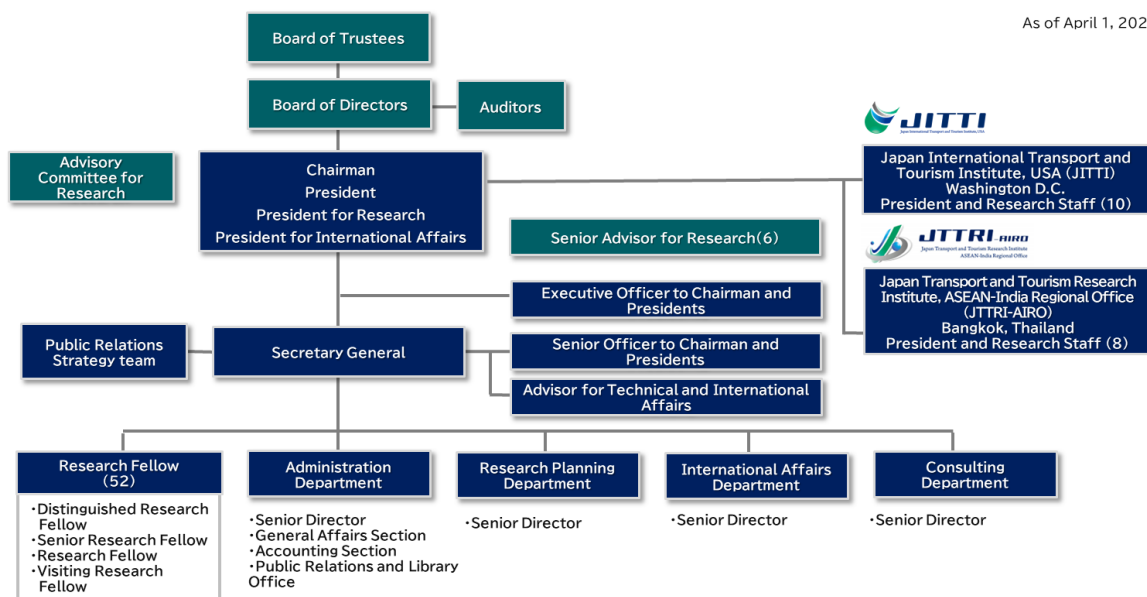


YAMAUCHI Hirotaka
President for Research



OKUDA Tetsuya
President for International Affairs
President, ASEAN-India Regional Office
President, Japan International Transport
and Tourism Institute, USA

Organization



Japan Transport and Tourism Research Institute

3-18-19 Toranomon, Minato-ku, Tokyo, 105-0001, Japan

TEL+81-3-5470-8400 FAX+81-3-5470-8401

URL: <https://www.jttri.or.jp/english/>



Japan International Transport and Tourism Institute, USA (JITTI)

1819 L Street NW, Suite 1000, Washington, D.C. 20036

URL: <https://www.jittiusa.org/>



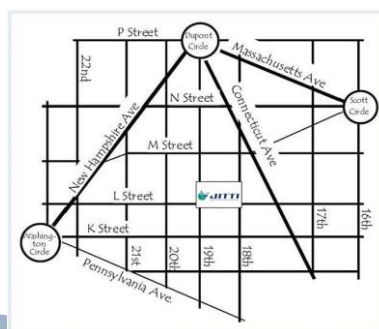
Japan Transport and Tourism Research Institute, ASEAN-India Regional Office

Serm-Mit Tower Unit 1704, 159/27 Sukhumvit 21 Road, Khlong Toei Nuea, Wattana, Bangkok 10110, Thailand

URL: <http://www.jttri-airo.org/>



Tokyo



Washington D.C.



Bangkok