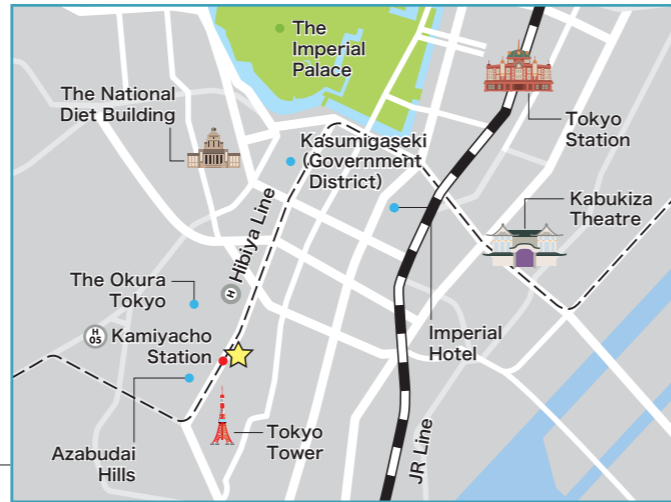




Japan Transport and Tourism Research Institute
 3-18-19 Toranomon, Minato-ku, Tokyo, 105-0001, Japan
 TEL +81-3-5470-8400 FAX +81-3-5470-8401

URL : <https://www.jttri.or.jp/english/>



2026-27



JTTRI
 Japan Transport and Tourism Research Institute

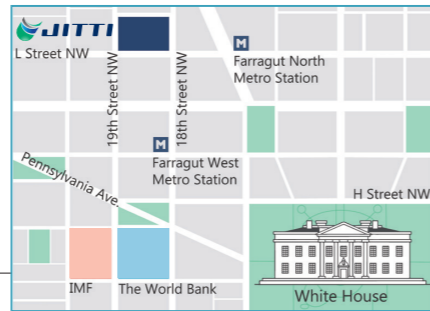
Japan Transport and Tourism Research Institute

一般財団法人 運輸総合研究所



Japan International Transport and Tourism Institute, USA
 1819 L Street NW, Suite 1000, Washington, D.C. 20036, USA
 TEL +1-(202)833-9763 FAX +1-(202)833-9769

URL : <https://www.jittiusa.org/>



ASEAN-India Regional Office
 Serm-Mit Tower Unit 1704, 159/27 Sukhumvit 21 Road,
 Khlong Toei Nuea, Wattana, Bangkok 10110, Thailand
 TEL +66-(0)2-258-6928

URL : <https://www.jttri-airo.org/>



**Transport and Tourism in the Future
 Will Certainly Be More Interesting**

JTTRI conducts comprehensive research and surveys
 on transport and tourism and develops policy recommendations
 for the future.



Please check the above website for the latest information on our activities and seminars. We also distribute an e-newsletter issued bi-monthly and our official X (formerly Twitter) account is updated regularly. Please subscribe and follow us.



e-Newsletter

https://krs.bz/jttrc/m/profile_new



@jttri_official

https://x.com/JTTRI_official

Message from the Chairman

April 2026

Today, a critical state of affairs all across the globe persists in fueling international instability and uncertainty, including attacks on Iran by the United States and Israel, the endless Russia-Ukraine war, the systemic and continuous confrontation between the United States and China, and so on.

In this context, multi-layered partnerships among nations sharing fundamental values—freedom, democracy, human rights, and the rule of law—have become increasingly important, as the harsh realities of this chaotic world are brought to light.

Our institute has been working to conduct the latest research on transport and tourism and to strengthen cooperation with other countries around the world, covering a wide range of regions from North America to Southeast and South Asia. This work is carried out in collaboration with our overseas offices: the Japan International Transport and Tourism Institute, USA (JITTI USA) in Washington, D.C. and the ASEAN-India Regional Office (AIRO) in Bangkok, Thailand.

In recent years, India in particular—with its remarkable economic growth and increasingly prominent role in the international community—has become a vital partner in the fields of transport and tourism. As the importance of our collaboration continues to grow, we are establishing an office in India. Furthermore, given that Europe has developed advanced and mature policies and initiatives in the fields of transport and tourism, and holds strong influence on the international community—particularly in the formulation of international standards—we will also establish an office in Europe.

Our institute will investigate and analyze the latest information and trends in transport and tourism from multiple perspectives. We will work to promote the sustainable development of transport and tourism in Japan and other countries, and to strengthen our collaborative partnerships, through sharing accumulated knowledge, insights and experience, providing information, and conducting awareness-raising activities.

Meanwhile, within Japan, we now face a critical situation that demands immediate action. Against the backdrop of a changing socio-economic structure marked by simultaneous population decline and aging, the increasing frequency and severity of large-scale natural disasters, and rapidly changing international circumstances and growing geopolitical risks, several initiatives have become urgent priorities: business restructuring in the transport and tourism industries, advancing digital transformation (DX) and harnessing AI, accelerating decarbonization (GX), strengthening supply chain resilience in shipbuilding, shipping and other sectors, enhancing economic security, and promoting multi-layered people-to-people exchanges.

These initiatives must be pursued with firm and unwavering conviction, adopting mid- to long-term perspectives and leveraging international expertise and insights, while closely monitoring global trends, including European policies.

Based on such recognition, our institute has formulated a medium-term strategy, with the current fiscal year serving as its first year. We aim to deliver results that truly *serve society* and *work in practice* by further deepening our interactions and partnerships with all stakeholders. To this end, we will continue to promote research and studies, symposia and seminars, consulting, and other activities.

Finally, we would like to express our deep appreciation to the Nippon Foundation for its generous support and commitment to our institute's activities. We also extend our heartfelt gratitude to all those who have been cooperating with our work, including our supporting members.



Tokaido Shinkansen (bullet train) and an urban railway train



Kumano Kodo Daimon-zaka Slope
Photo Credit: Wakayama Tourism Federation

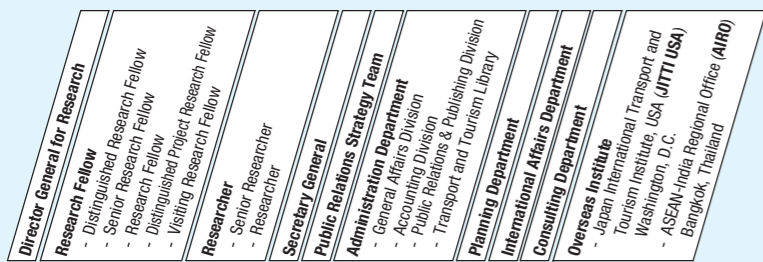
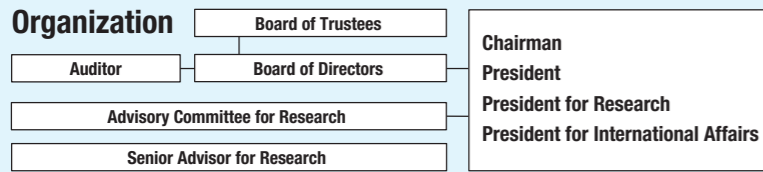
Introduction

The Japan Transport and Tourism Research Institute (JTTRI) is a think tank established in 1968 under the initiative of the former Ministry of Transport (now the Ministry of Land, Infrastructure, Transport and Tourism) with the support of the Japanese government, business organizations, and academic institutions. JTTRI conducts research and offers policy recommendations for the transport and tourism sectors. Founded upon the philosophy of serving as a bridge between scholarly research and practical necessity, the institute is committed to producing research and recommending policies that are both useful and usable, and contribute to resolving challenges that we face.

The JTTRI headquarters in Tokyo and its overseas institutes—the Japan International Transport and Tourism Institute, USA (JITTI USA) in Washington, D.C., USA and the ASEAN-India Regional Office (AIRO), in Bangkok, Thailand—operate in concert to engage in broad-based and strategic activities throughout the Indo-Pacific region from North America to Southeast Asia and South Asia, and in Europe.

JTTRI's activities are supported by a grant from the Nippon Foundation.

Organization



Institute Profile

- Name:** Japan Transport and Tourism Research Institute (JTTRI)
- Chairman:** SHUKURI Masafumi
- History:**
 - Oct. 1968: Japan Transport Economics Research Center (JTERC) established
 - Apr. 1998: Renamed the Institution for Transport Policy Studies (ITPS)
 - Apr. 2012: Transitioned to a General Incorporated Foundation
 - Jun. 2016: Renamed the Japan Transport and Tourism Research Institute (JTTRI)

Number of Employees: 97 (as of April 1, 2026)



Container ship operated by Ocean Network Express Holdings, Ltd. (ONE)
©Ocean Network Express Pte. Ltd.



Tokyo International Airport (Haneda Airport)



SHUKURI Masafumi
Chairman, Japan Transport and Tourism Research Institute (JTTRI)



Research and Policy Recommendations

In accordance with the Five Priority Themes set forth in our medium-term strategy, JTTRI is incorporating the latest information and insights from both domestic and international sources and adopting novel perspectives unconstrained by conventional thinking—conducting pioneering research and studies, formulating policy recommendations, and strengthening international collaboration and cooperation.



Recent Major Policy Recommendations and Research Outcomes

“Recommendations for Accelerating the Deployment of Automated Public Transport: Buses, Taxis, and Railways” (June 2025)

To address the challenges of introducing automated public transport and accelerating its widespread deployment, we published recommendations built on four pillars: (1) ensuring safety and passenger services; (2) establishing business viability through collaboration among relevant stakeholders; (3) developing subsidy and funding systems; and (4) enhancing social acceptance, common awareness, and public support.

Urgent Recommendation: “Proposed Structural Reform of Regional Transport Regulatory System” (June 2025)

Given that regional transport operators are facing existential difficulties and the realization of a sustainable society is at serious risk, we compiled a proposal for structural reform of the regional transport regulatory system, consisting of 27 measures, and issued it as an urgent recommendation.

“Practical Guide to Improving Productivity in the Accommodation Industry” (June 2025)

To support enhanced productivity in the accommodation and regional tourism industries, we compiled and published this practical guide for accommodation operators, tourism associations, Destination Management Organizations (DMOs), and local governments. The guide clearly organizes feasible initiatives for on-site implementation from three perspectives: (1) investment in facilities, (2) business reform and accumulation of human capital, and (3) enhancing customers’ perceived value in services and improving managers’ pricing capabilities.

For a list of research topics currently under study, see <https://www.jttri.or.jp/research/>

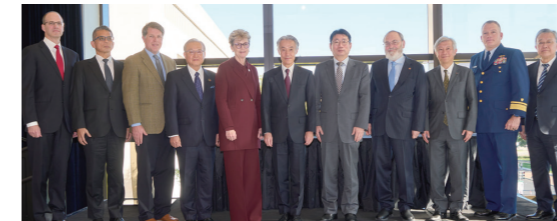


Fostering Collaboration and Cooperation with the International Community

JTTRI actively promotes collaboration and cooperation with the international community—constantly maintaining a global perspective of the roles that transport and tourism should play—in a world where people and goods move actively across national and regional borders, and global issues such as climate change have emerged as defining challenges of our time.

Specifically, we conduct research and analysis on the latest information and trends in transport and tourism from multiple perspectives, in line with the Five Priority Themes set forth in our medium-term strategy. Concurrently, we are advancing high-level exchanges that strengthen collaboration and deepen mutual understanding among public and private sector partners in relevant countries and regions, as well as providing high-quality research and studies, and organizing symposia and seminars, all in a strategic and wide-ranging manner.

Through these activities, we contribute to the sustainable development of transport and tourism in Japan and other countries, and to strengthening collaboration and cooperation in the international arena, including the realization of a “Free and Open Indo-Pacific” and the effective involvement of the G20 framework.



“Sea Lane Safety and Supply Chain Resilience for Economic Security” Symposium in Washington D.C., USA.



Tourism working group meeting between Thailand and Japan



India's Minister of Finance Sitharaman (center) and Chairman of 15th Finance Commission N.K. Singh (right) with Chairman Shukuri

Japan International Transport and Tourism Institute, USA (JITTI USA)

JITTI USA was established in Washington, D.C., in 1991 to enhance the collection of information on transport and tourism in North America, Europe, and beyond. In addition to studying U.S. trends and introducing Japanese policies, JITTI USA works on strengthening cooperation, information sharing, and mutual understanding between the public and private sectors in the U.S. and Japan by hosting symposia with government officials and experts. Currently, the institute has 12 staff members, including the President.



ASEAN-India Regional Office (AIRO)

AIRO was established in Bangkok, Thailand, in April 2021 to conduct research and surveys, collect information, organize seminars and symposia, disseminate meaningful information to government, academia, and industry, and build cooperative relationships in transport and tourism in Southeast and South Asia. Currently, eight staff members, including the President, contribute to the fields of transport and tourism with a focus on local needs.



Collaboration with Domestic and International Research Institutions

We collaborate with domestic and international research institutions such as Korea Transportation Institute (KOTI) and Institute of Comprehensive Transportation of National Development and Reform Commission of People’s Republic of China (ICT), as well as present research and disseminate information at conferences such as the Eastern Asia Society for Transportation Studies (EASTS) and the International Transport Forum (ITF). Since 2019, the JTTRI Special Award has been presented at EASTS International Conferences to outstanding papers published in the field of public transport and mobility activities. The JTTRI Best Paper Award was first presented at the Air Transport Research Society (ATRS) World Conference in 2023 on the theme of sustainability, etc.

Overseas

- Korea Transport Institute (KOTI) *
- Korea Maritime Institute (KMI) *
- Korea University Maritime Law Centre (KUMLC) *
- Institute of Comprehensive Transportation of National Development and Reform Commission of People’s Republic of China (ICT)
- Vietnam Institute of Culture, Arts, Sports and Tourism (VICAST) *
- Gati Shakti Vishwavidyalaya (GSV) *
- (Former National Rail & Transportation Institute (NRTI))
- National Maritime Foundation (NMF) *
- Johns Hopkins University SAIS
- The Edwin O. Reischauer Center for East Asian Studies *
- American Public Transportation Association (APTA)
- Eastern Asia Society for Transportation Studies (EASTS)
- World Conference on Transport Research Society (WCTRS)
- Air Transport Research Society (ATRS)
- International Transport Forum (ITF)
- The International Association of Public Transport (UITP)

(* Institutions that have signed MOUs with JTTRI)

ATRS(Air Transport Research Society) 2025 with the recipients of the 2025 JTTRI Best Paper Award(July 2025)



MOU signing ceremony with NMF (October 2025)



Domestic

- Graduate School of Public Policy, The University of Tokyo (TTPU) *
- Japan Research Institute for Road and Street *
- Waterfront Vitalization and Environment Research Foundation (WAVE) *
- World Tourism Organization (UN Tourism) Regional Support Office for Asia and the Pacific *
- Japan Railway Construction, Transport and Technology Agency (JRRT) *
- International High-speed Rail Association (IHRA) *
- Japan Maritime Center (JMC) *
- Japan Society of Civil Engineers (JSCE)
- The Japan Society of Transportation Economics (JSTE)
- Association for Planning and Transportation Studies
- Aviation Policy Research Association

Symposia, Seminars, etc.

JTTRI organizes symposia to discuss research outcomes and policy recommendations with experts, as well as colloquia and research conferences to report and present the latest findings. In addition, we regularly hold the Transport Policy Seminar which features lectures by external academics and experts, and the JTTRI Global Seminar, where government officials and experts from various countries deliver presentations. Furthermore, JTTRI hosts international symposia and seminars in the U.S. and various parts of Asia, inviting government officials, academics, experts, and business leaders from both Japan and abroad to disseminate information and promote exchanges.

<Recent Symposia and Seminars>

5th JTTRI Global Seminar

Development of Railway and Transit Oriented Development in India's Mega-City

- February 10, 2026, 2:00- 5:30 PM (JST)
- Tokyo, Japan *Hybrid Event



U.S.–Japan International Exchange Symposium 2025

Building a Trusted and Collaborative Partnership through Multi-layered Engagement

- November 20, 2025, 3:00- 6:00 PM (EST)
- Washington, D.C., USA *Hybrid Event



Transport Decarbonization Symposium IV

A Shared Journey Toward a Carbon-Neutral Transport Industry

- April 21, 2025, 2:00- 5:00 PM (JST)
- Tokyo, Japan *Hybrid Event



The 3rd Japan-Viet Nam Tourism & International Human Exchange Event

Creatively-Value-Added Tourism: Towards Sustainable Future for Destinations

- November 12, 2025, 9:00- 12:00 AM (ICT)
- Hanoi, Viet Nam *Hybrid Event



Consulting Business (Contracted Research)

JTTRI accepts commissions by national and local governments, independent administrative agencies, private enterprises, and other entities to conduct surveys for policy development and planning across a diverse range of sectors, including public transport, mobility, high-speed rail (Shinkansen), urban and intercity railways, aviation, logistics, tourism, etc.

Particularly in the field of transport planning, we leverage our accumulated knowledge and a network of academics and experts to contribute to society by conducting research and surveys that address practical needs. These efforts have included: (1) feasibility studies, demand forecasts, and cost-benefit analyses for new urban railways in Tokyo, Osaka, and other cities, (2) evaluation of railways and other projects, and (3) basic studies on planning for new or additional runways at international hub airports.

Publication of Journal and Books

Journal “Transport Policy Studies’ Review”

The Transport Policy Studies’ Review, launched in 1998, is based on the JTTRI founding philosophy of “bonding between academic research and practical needs” in the fields of transport and tourism. All papers are published under fair peer review from multiple perspectives and in-depth deliberation by an editorial committee comprising a diverse panel of academics and experts.



<https://www.jstage.jst.go.jp/browse/tpsr/-char/en>



“JTTRI Quarterly Magazine”

Since December 2021, the magazine has been published four times a year to promote our activities and research findings in an easy-to-understand manner.

This magazine is also available on our website.



<https://www.jttri.or.jp/journal/dayori.html>



Published Books

We publish and sell books on transport, such as “Railways in Figures” and “Annual Report on Urban and Regional Transport.”



<https://www.jttri.or.jp/publish/>

Transport and Tourism Library

The Transport and Tourism Library has a collection of both domestic and foreign books and materials related to transport and tourism. As of March 2026, it held approximately 37,000 books and 17,000 journals. These books, journals, and materials are used widely for research and investigation. They are available for reading and lending to relevant government agencies, academic experts, and supporting members, and are also accessible to the general public.

Library Hours

Morning: 10:00 AM - 12:00 PM (Lunch Break 12:00 PM - 1:00 PM)
Afternoon: 1:00 PM - 5:30 PM

* Please enter by 11:30 AM for the morning session and by 5:00 PM for the afternoon session.

Closed on the following days

- Weekends and national holidays
- Last day of the month (The preceding day in case the last day is a holiday)
- Year-end and New Year holidays: December 27 – January 7
- Establishment anniversary: October 1
- 3 days at the end of the fiscal year

Online search facility

Books, magazines, and journals held in the Transport and Tourism Library can be searched online.

Transport and Tourism Library

3-18-19 Toranomon (2nd Floor), Minato-ku, Tokyo, 105-0001, Japan
TEL +81-03-5470-8413 FAX +81-03-5470-8411 E-mail libroom@jttri.or.jp



<https://www.jttri.or.jp/about/outline/inforlib/>



Supporting Members

Individuals, groups, and corporations who agree with the aims and objectives of our activities are invited to become Supporting Members of JTTRI.

Primary Membership Benefits

- Members receive a copy of the Institute’s periodicals such as the journal, “Railways in Figures,” and “Annual Report on Urban and Regional Transport.”
- Recordings of symposia, seminars, etc., hosted by JTTRI are distributed in advance to members.
- Members can borrow books from the Transport and Tourism Library and use the workspace in the library.
- Members can request lectures by our researchers.

Membership fee:
¥120,000 per annum

<https://www.jttri.or.jp/sanjiyo/>

