



Initiatives to Develop Certification System for Cold Chain Logistics Services Standards

ClassNK

*February 7, 2022
Seminar for Promotion of Cold Chain Logistics Standards in Malaysia*



1
Introduction of
ClassNK

2
Overview of the Cold
Chain Logistics
Services Standard
(JSA-S1004)




3
Basic Flow of
Certification Audit for
JSA-S1004

4
Audit Points for JSA-
S1004

5
Example of JSA-
S1004 Audit Points

Focus Points

1 Introduction of ClassNK - Overview

<i>Brand Name</i>	Nippon Kaiji Kyokai (ClassNK)
<i>Abbreviation</i>	NK
<i>Status</i>	Non-Profit Organization
<i>Core Services</i>	Classification & Statutory Survey of Ship Operation
<i>History</i>	Founded in 1899
<i>IACS</i>	Founding Member
<i>Head Office</i>	Tokyo
<i>Branch Offices</i>	20 in Japan, 110 in Overseas
<i>Employees</i>	Approx. 1980
<i>Accreditation</i>	JAB  RvA  DAKKS 



1 Class Society

- ① "Class" is the 3rd certification framework of merchant marine for insurance.
- ② Developing rules, conducting plan approval & on-site surveys for materials, machinery, equipment, and constructions, and registering "Class" to ships.
- ③ Providing "Class Services" for 20% of ocean-going fleet: 9,000 ships (top shares*), 260 mGT (2nd*)
**Clarkson World Fleet Register.*

2 ISO Certifier

- ① Accredited to certify management systems.
- ② 650 companies/organizations are certified by ClassNK;
 - ✓ Quality Management (ISO 9001)
 - ✓ Environmental Management (ISO 14001)
 - ✓ Occupational Health and Safety Management (ISO 45001)
 - ✓ Road Traffic Safety Management (ISO 39001), etc.

3 Other Certifications

- ① Cold Chain Logistics Services (JSA-S1004, ISO 23412)
- ② Certification for the Carbon Offsetting and Reduction Scheme for International Aviation (CORSA)
- ③ Health, Safety & Environment (HSE) Management System for shipbuilding companies
- ④ Ship Recycling and more.....

1 Certification Services for ISO & Other Standards

ClassNK conducts audits as a 3rd party organization.

1 ISO Certification Services



Service Quality Certification

- ISO23412 (B-to-C Cold Chain Logistics) >>> *NEW Service*

Management Systems Certification

- ISO 9001, ISO 14001, ISO 45001 (OHSAS 18001), ISO 39001, ISO 50001

Greenhouse Gas Accounting & Verification

- ISO 14064

2 Other Standards Certification Services by Own Brand



Service Quality Certification

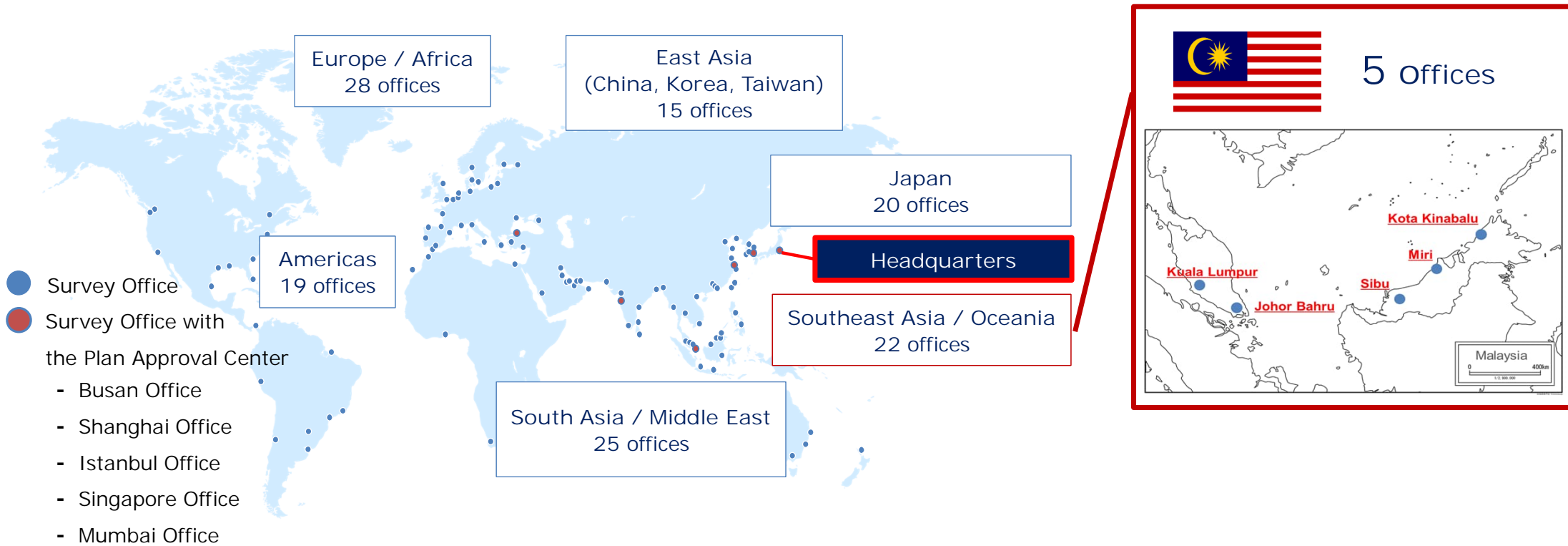
- JSA-S1004 (B-to-B Cold Chain Logistics) >>> *NEW Service*

Other Standards Certification

- Health, Safety & Environment (HSE)
- Bio safety for Cruise Ship
- Driver's Work Environment
- Ship Recycling
- EU MRV

1 Our Service Network

- Approximately 130 dedicated survey offices are located in major ports and maritime cities in more than 50 countries around the world.
- ClassNK provides services 24 hours a day, 365 days a year.



2 Overview of the Cold Chain Logistics Services Standard (JSA-S1004)



To Retailers & Food Manufactures

Which logistics company would you choose for storage & transport services??

Refrigerated Warehouse



Fresh foods are placed without temp. control.



Fresh foods are kept under temp. control.



Refrigerated Transport



Fresh foods are loaded into a truck without temp. control.



Fresh foods are loaded into a truck with temp. control.



Results in food condition:

Stale



Fresh



Stale



Fresh



Spoiled



Fresh



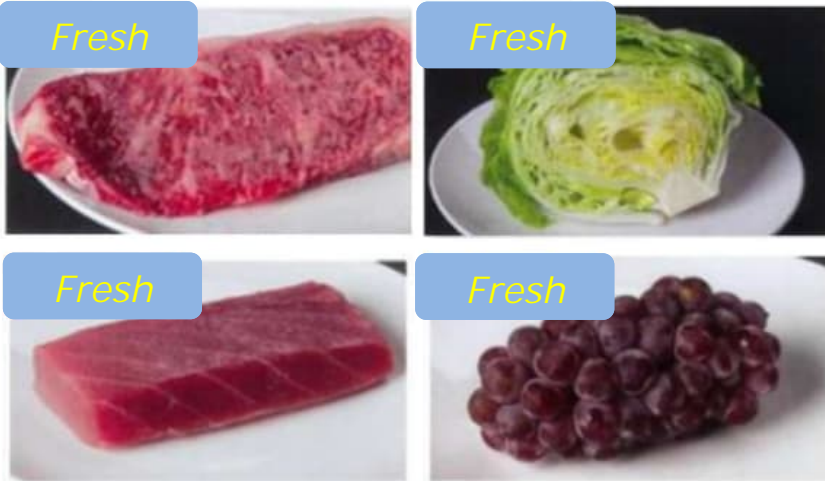
Spoiled



Fresh



Fresh foods are kept under temp. control.



Appropriate Cold Chain Logistics Services



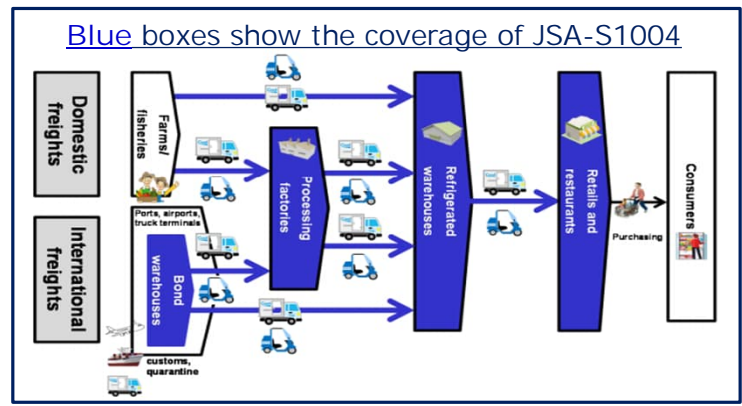
Health of your clients, customers, and their families !!!



2 Overview of the Cold Chain Logistics Services Standard (JSA-S1004)

- Based on the "ASEAN-Japan Guidelines on Cold Chain Logistics," B-to-B Cold Chain Logistics Services are standardized as "JSA-S1004" by the Japan Standards Association (JSA).
- The level of requirements is basically in line with the level of cold chain logistics services provided by Japanese logistics companies but includes some items that consider the circumstances of ASEAN, such as "transferring the cargo with truck's beds of the low temperature truck in contact with each other."

Scope	Target Cargo	● Food & food products requiring temperature control
	Temperature Range	● Frozen, chilled, and constant temp.
	Target Business	● Low temperature storage services provided by warehouse operators and low temperature transport services provided by transport operators in the B-to-B model.

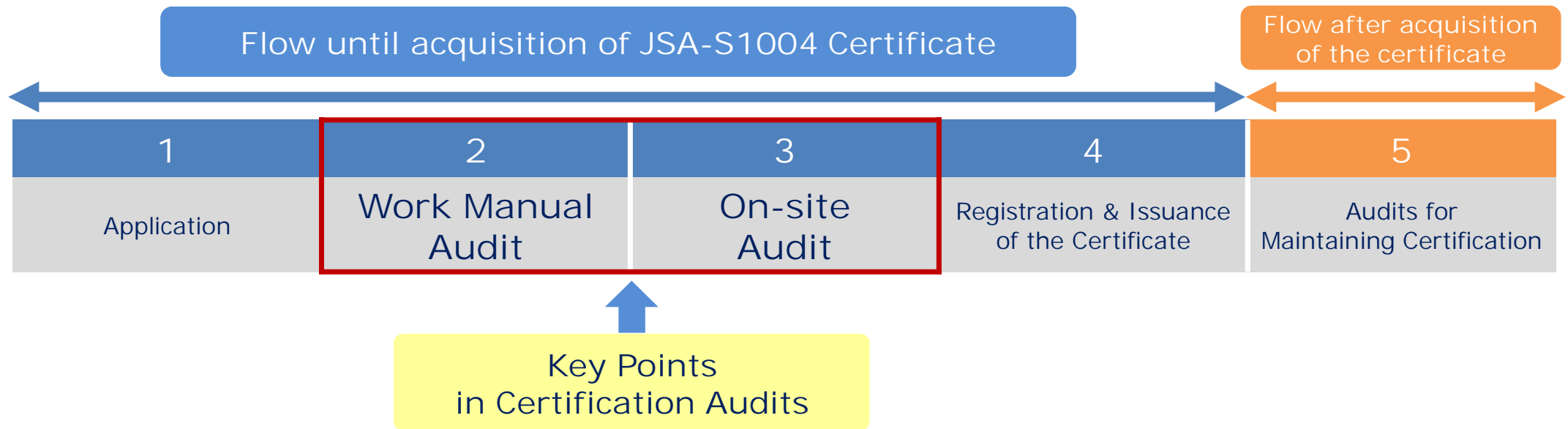


Requirements	1	Low Temperature Storage Services	Loading Cargo into the Low Temperature Warehouse	Low Temperature Storage	Shipping out	
	2	Low Temperature Transport Services	Loading Cargo into the Low Temperature Vehicle	Transport	Transferring, Loading and Unloading	
	3	Common Items of 1 & 2	Compliance with Local Rules, Laws and Regulations	Ensuring Hygiene the Safety and	Education and Training	Maintenance and Management of Equipment and Facilities

3 Basic Flow of Certification Audit for JSA-S1004

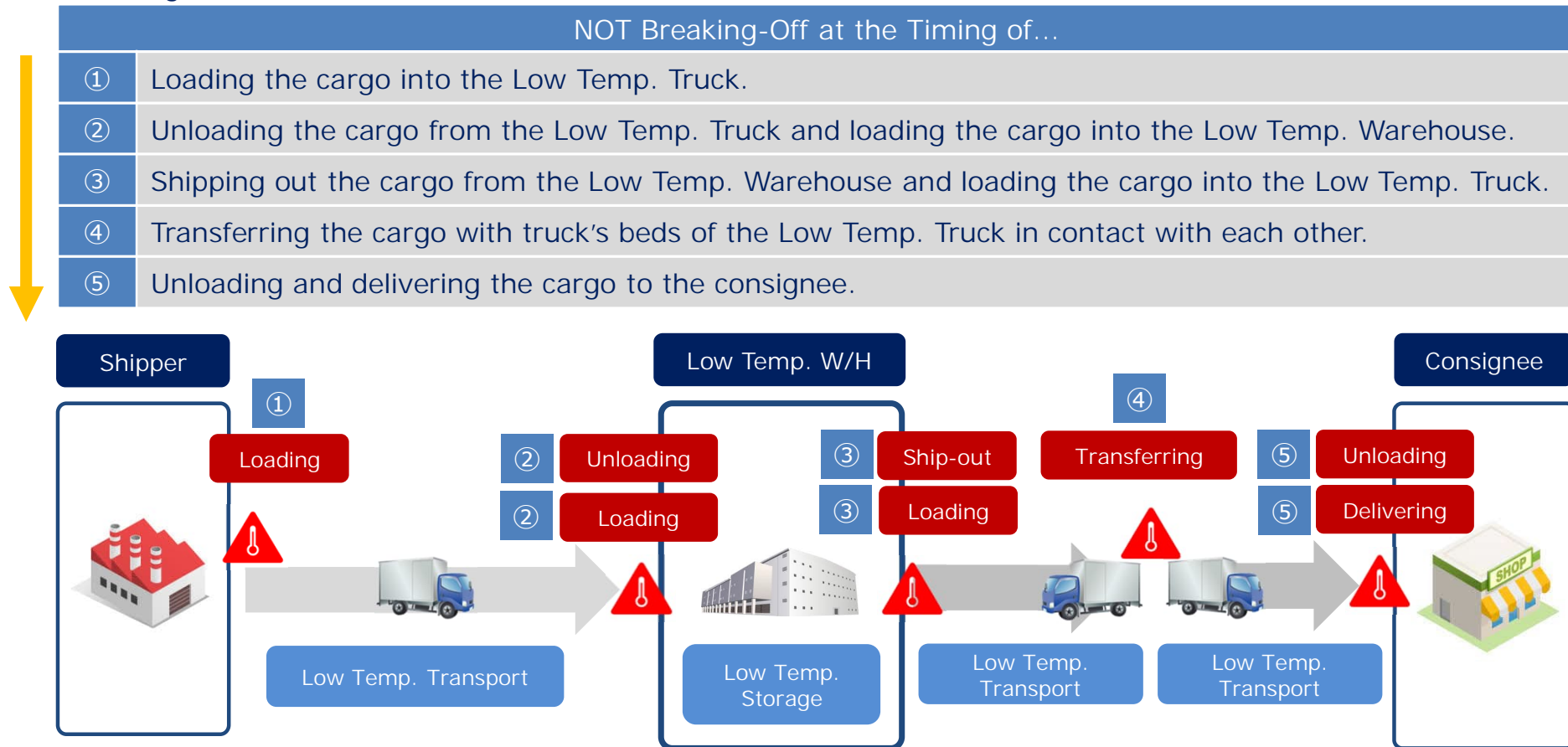
- The audited organization shall prepare "Work Manuals"* corresponding with the items required by the JSA-S1004 Standard. **Standard Operation Procedures (SOP)* in the logistics industry.
- During Work Manual Audit, ClassNK shall audit to ensure that all standard requirements, including specific measures, have been stipulated in relevant manuals, etc. (instructions, checklists, teaching materials, etc.).
- During On-site Audit, ClassNK shall confirm with the record, etc. that matters stipulated in the above work manuals are being reliably implemented in the operation sites, and that efforts are being made to improve quality via quality improvement cycles (PDCA), etc.

Basic Flow of Certification Audit for JSA-S1004



4 Audit Points for JSA-S1004

- Important checkpoints in audit are that the Cold Chain Logistics Services of the client is "NOT Breaking-Off in each process."
- It is important to be able to maintain and control the temperature, requested by shippers at the "Connection Points"  shown in the figure below.



5 Examples of JSA-S1004 Audit Points – Work Manual Audit

JSA-S1004 Standard Requirement 3.3.1

The warehouse operator shall store the cargo at the temperature contracted in advance with the cargo owner. In addition, the warehouse operator shall keep a record of the temperature within the warehouse measured at regular intervals, so that the warehouse operator can provide evidence for the cargo having been stored at the appropriate temperature.

Ex. of Audit Points

Temperature display panel within the storage



Temperature recording device



Work
Manual
Audit

Confirming that the manual stipulates specific measures for periodically recording the temperature inside of the warehouse as evidence that cargo is being stored at the temperature range set forth beforehand in the contract with the cargo owner.

Examples of Measures Described in the Work Manual:

- ✓ The operation manuals stipulate that thermometers shall be inspected visually in each storage area at regular intervals and the temperatures shall be recorded manually.
- ✓ The operation manuals stipulate that the checking of the status of storage temperature, the occurrence of temperature abnormalities, and temperature measurement and monitoring methods shall be recorded in order to report to the customers.
- ✓ The operation manuals stipulate that the measurement results of each storage shall be recorded automatically at regular intervals.
- ✓ The operation manuals stipulate that the thermometer calibrations shall be periodically executed and recorded with the proper measures by the service provider, and the results of thermometer calibrations shall be kept with the certificate.
- ✓ The operation manuals stipulate that the reporting system shall be confirmed in the case of an abnormality in the thermometer or temperature control system, and that the contents of the report shall be recorded in the prescribed form.

Examples of Audit Documents: Procedures for temperature measurement and monitoring of low temperature warehouse, etc.

5 Examples of JSA-S1004 Audit Points – On-site Audit

On-site Audit

As a sample survey to confirm that measures stipulated in the manual are being taken, select any cargo and confirm that **it is being stored in the temperature range followed with the contract document.**

Checking the temperature record to confirm that said cargo is being stored in the temperature range established in the contract with the cargo owner.

Examples of Checkpoints in On-site Audits:

- ✓ Evaluating the measures described in the manual have been taken appropriately and reliably at the operation site .
- ✓ Conducting the following sample surveys to evaluate whether the cargo is being stored at the low temperature-controlled room in accordance with the temperature range disclosed in the refrigerated storage contract with the customers.
 - A) To confirm that measurement results are being recorded in the temperature record in which temperatures monitoring is being conducted by the workers for each low temperature-controlled room.
 - B) To confirm that the thermometer calibration records or the certificates that the calibrations are being conducted properly are provided by the service provider.
 - C) To confirm that there is the defrost record of the cooling systems in the temperature record.
 - D) To confirm that the irregularity details^{*} are being recorded in irregularity reports when abnormalities occur at the operation site.

^{*}Examples: Reporting to the customer, Records of action taken instructed by the customer, Records of the date, time and cause of the irregularity, Improvement measures, etc.

Examples of Audit Documents: Temperature Record, Temperature Record History Data, Contract Document, Calibration Record, Irregularity Reports, etc.

We look forward to receiving contact from you! !



Transportation and Logistics Department

Email: ltd@classnk.or.jp

Tel: +81-3-5226-2412

Address: 4-7, Kioi-cho, Chiyoda-ku, Tokyo, Japan

Application for Cold Chain Logistics Certification

<https://www.classnk.or.jp/hp/en/authentication/coldchain/index.html>

A person wearing a white lab coat is pointing their right hand towards a large architectural drawing or blueprint spread out on a table. The drawing features various lines, including a prominent orange line. The scene is brightly lit, and the overall tone is professional and collaborative.

THANK YOU

For Your Kind Attention